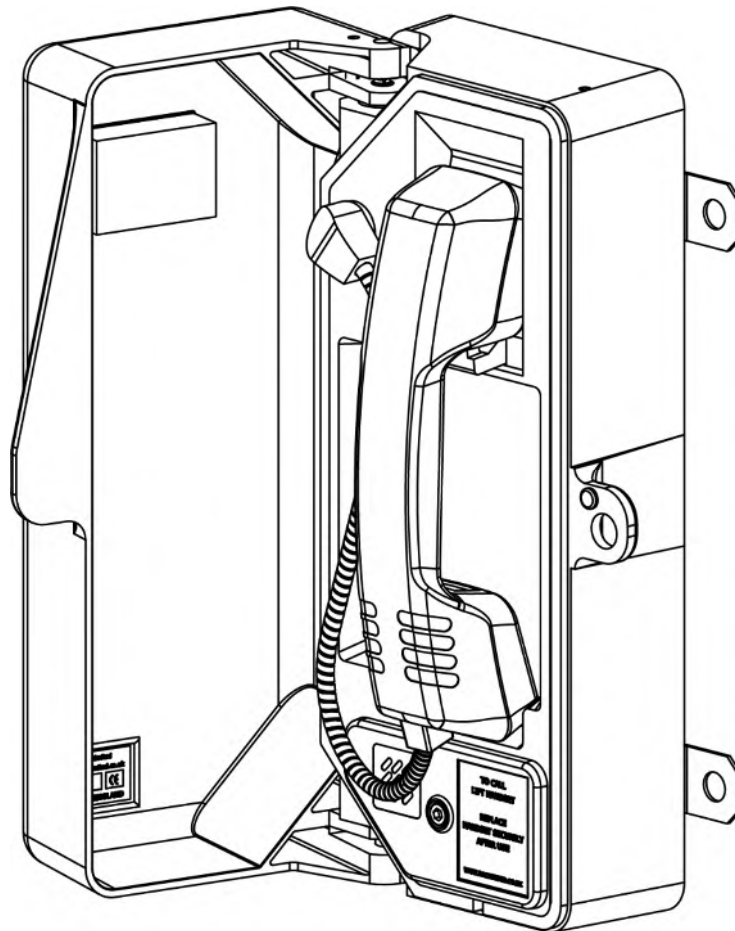




# User Guide

## RA708 Series – Analogue



## Contents

Safety Information	2	Earth Bonding	6
Product Description	2	Daily Operation	6
Mounting Options	3	Maintenance & Cleaning	7
Terminal Connections	4	Technical Data	7
Timer Settings	5	Quality & Warranty	8

## Safety Information

<b>⚠ ATTENTION ⚠</b>
All installation to be carried out by qualified installation engineer

- Ensure care is taken to avoid trapping fingers when opening and closing the sprung telephone door.
- Standard telephone lines are not considered as 'high-voltage'; however, care should be taken when connecting or disconnecting the telephone line.

## Product Description

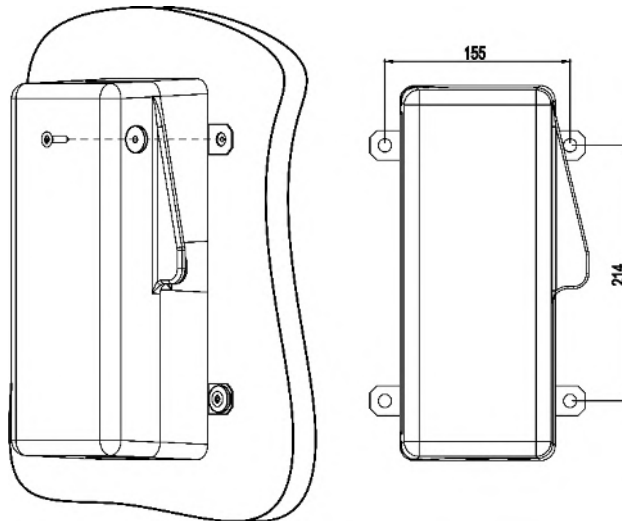
The RA708 series of telephones are ruggedised and corrosion resistant, providing enhanced protection against dust and moisture ingress. Designed and manufactured to provide reliable communication in arduous environments associated with industrial use.

The telephone is available in various configuration options:

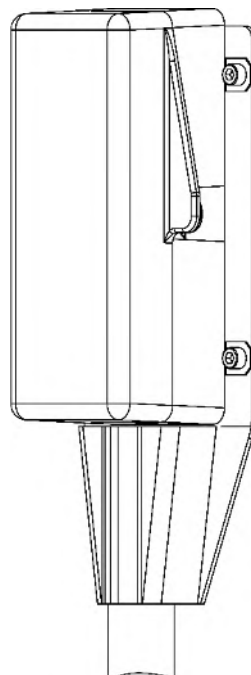
- Central Battery (CB) or Full Keypad (DTMF) operation
- Grey or Yellow powder coated surface for a durable finish
- Armoured anti-vandal cord or extendable curly cord handset options
- No1 lock on door for additional security or magnetic door latch
- Various mounting options (see below)

## Mounting Options

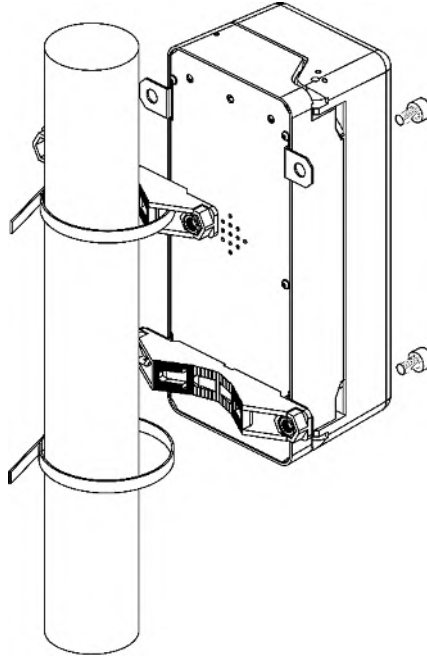
- Wall Mounting – The telephone can be mounted directly to a wall using suitable wall plugs and screws (not supplied), coupled with the reducing washers supplied with the telephone.



- Top of Pole Mounting – Maximum post diameter -50mm. Mounted via DAC's mounting bracket (see part numbers below)
  - 087/073316 - Grey
  - 087/073315 - Yellow

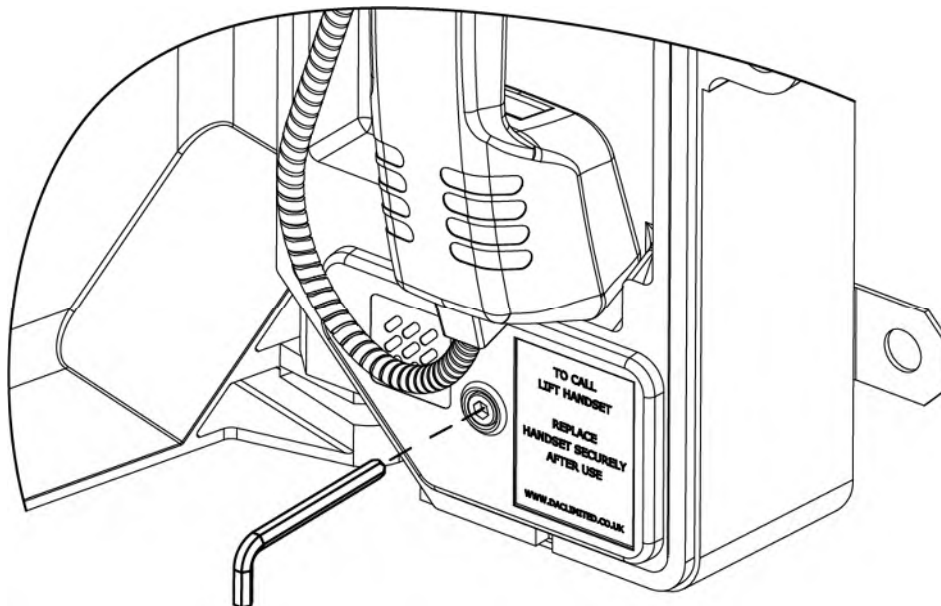


- Side of Post Mounting – Maximum post diameter - 172mm. Mounted via DAC's mounting bracket (see part number below)
  - 087/073314 (Tespa banding not included)



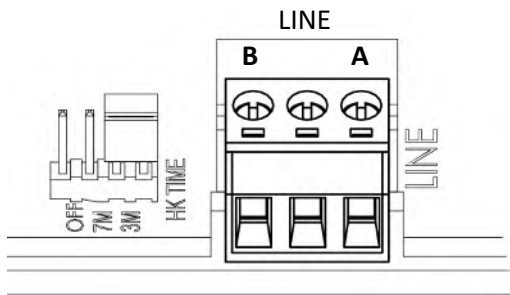
## Terminal Connections

Using a 4mm hex key, remove the telephone access cover to reveal the terminal connections.



Always ensure that wire ends are snipped off and stripped back to expose fresh copper. Screw termination wires into the green connector provided (always use the new connector

provided, when installing a new telephone), as per the illustration below. DAC recommends using a dielectric grease to help avoid dissimilar metal corrosion of copper tails.



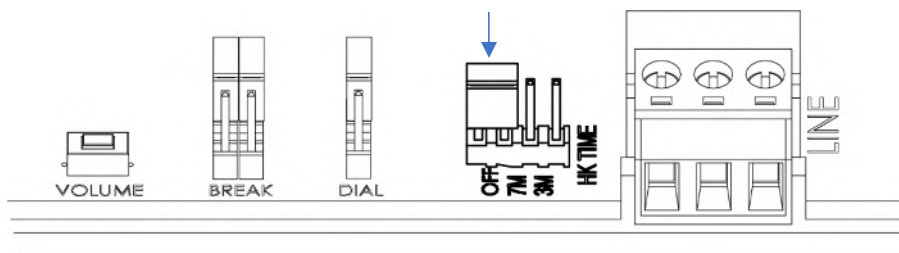
Watch the animation

Once the telephone line is connected, re-fit the access cover using 4mm hex key, ensuring the gasket is tightly sealed.

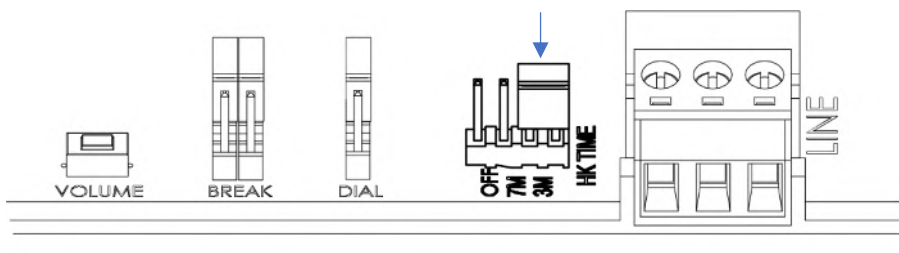
## Timer Settings

The RA708 telephone has 3 different configurable options for auto hook time: off, 3 minutes and 7 minutes. This is the time from placing or receiving a call that the telephone will automatically terminate the call. The timer is configurable by a PCB jumper, which can be placed in 3 different positions. Diagrams for timer settings (off, 3 min & 7 min) below:

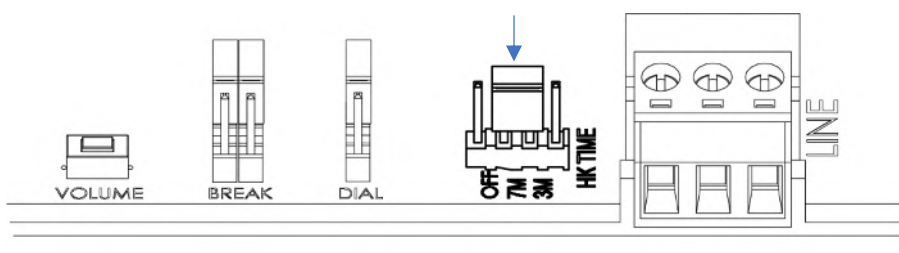
- Off – non-rail applications



- 3 min – rail crossings



- 7 min – other rail applications



## Earth Bonding

All telephones should be earthed upon installation. This is to protect both the user and equipment in the event of an accident. The earth bonding point is on the rear of the telephone and is accessible via a PZ2 screw and external washer.



## Daily Operation

- CB
  - Lift handset to initiate call, the exchange will connect the call for you
  - Complete call
  - Securely re-stow handset in upright position
  - Close the door, ensuring the door is sealed and un-obstructed
  
- DTMF
  - Lift handset and dial the desired number to initiate a call
  - Complete call
  - Securely re-stow handset in upright position
  - Close the door, ensuring the door is sealed and un-obstructed
    - Note, the DTMF telephone has a redial button 'R' on the keypad. This allows the user to dial a new number without having to stow the handset and reset the hook switch.
  
- Lock
  - The Lock telephone has the same operational parameters as the CB telephone however the BR No1 lock requires un-latching to get access to the telephone. Once the telephone door has been securely closed, the BR No1 lock will re-latch automatically with an audible 'click'.

## Maintenance & Cleaning

- Ensure microphone and speaker cavities are maintained and clear of debris to maintain clear audio quality
- Inspect door gasket – check for rips, tears, excessive compression to maintain IP rating
- Check handset cord for damage/vandalism/breaks
- Ensure painted surfaces are clean, free of dirt, salt, etc to maintain the life span of the paint
- Check gland and blanking plug are firmly secured into telephone to maintain IP rating.
- Check access cover is fitted securely to maintain IP rating

## Technical Data

### **Ringling:**

Frequency modulated, piezo transducer, cadence as per incoming ringling. REN 1.0, speaker

### **Power Supply options:**

Line powered [PSTN]

### **Time out:**

Programable

### **Temperature:**

Operating: -30° C to +60° C

Storing: -40° C to +70° C

### **Relative Humidity:**

Up to 95% (non-condensing)

### **Casing Material:**

Robust cast aluminium

### **Weight:**

3.5kg

### **Colours:**

Standard yellow or grey durable powder coat  
[custom colours available]

### **Safety:**

Manufactured to BS EN 60950

EN55022:1998 (EMC - Emissions)

EN50121-4: 2016 +A1:2019 (EMC compatibility – railway)

ITU-T K21 (Resistibility of telecommunications equipment to over voltages and over-current)

### **Protection:**

Dust and liquids – IP65

Inductive coupler to ETS 300381 standard

## Quality & Warranty

DAC Limited ensures that our products are designed and manufactured to the highest quality. In the unlikely event of a failure or malfunction of DAC's equipment, we offer a UK RTB warranty.

This limited warranty does not cover any damage, deterioration or malfunction resulting from any alteration, modification, improper or unreasonable use or maintenance, misuse, abuse, accident, neglect, fire, improper packing, and shipping (such claims must be presented to the carrier), lightning, power surges, or other acts of incorrect nature.

If you have any questions or concerns, contact DAC Ltd at +44 (0) 1282 447000 or [sales@daclimited.co.uk](mailto:sales@daclimited.co.uk).

DAC Limited, Union Mill, Watt Street, Sabden, Lancashire, UK, BB7 9ED  
Tel: +44 (0) 1282 447000 Fax: +44 (0) 845 280 1915  
[www.daclimited.co.uk](http://www.daclimited.co.uk)