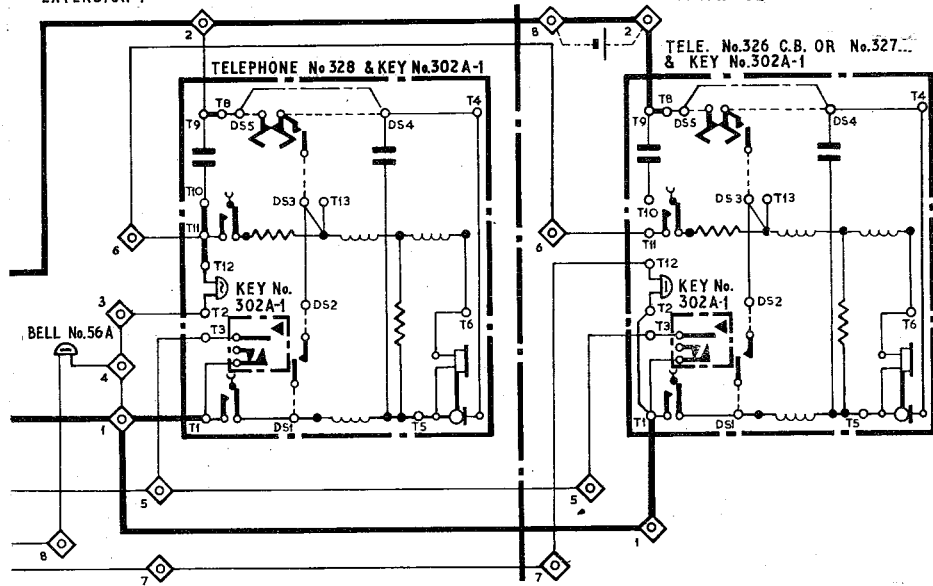
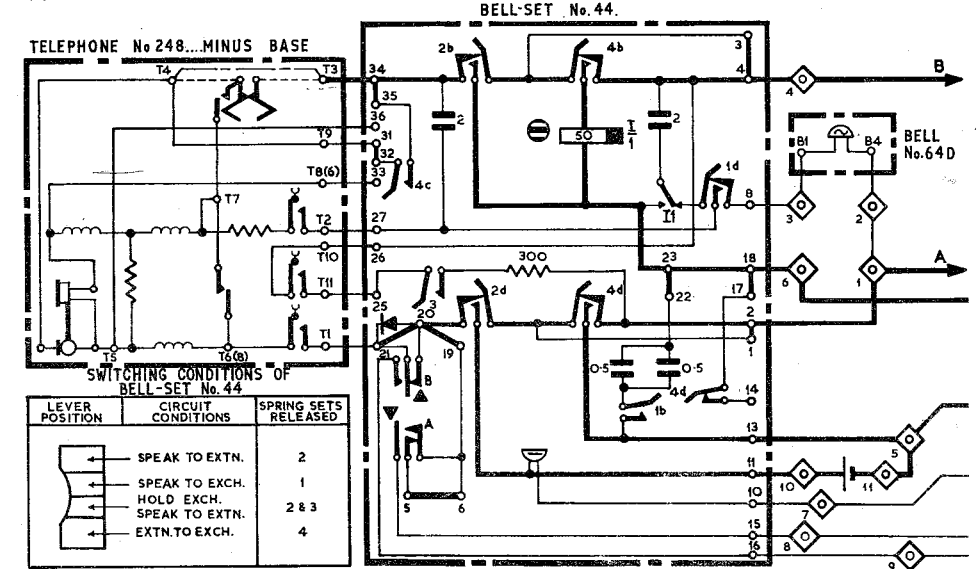


EXPLANATORY OF EXTENSIONS  
EXTENSION 1



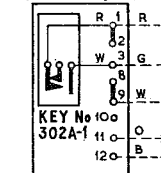
EXPLANATORY OF MAIN USING BELL-SET No.44.



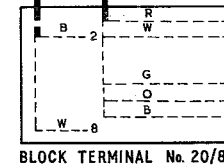
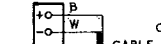
WIRING - EXTENSIONS (SEE PAGE 2 FOR MAIN-WIRING)

EXTENSION No. 2

TELE. No. 326  
C.B.  
MINUS CORD  
(NOTES 10, 11 & 12)

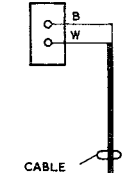


CELLS DRY  
R40 (NOTE 13)

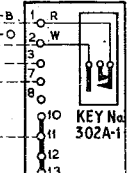


EXTENSION No. 1

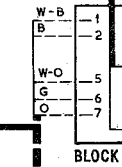
BELL No.56A  
(NOTE 10)



TELE. No.321  
(NOTES 11 & 12)



TELE. No.328  
(NOTES 11 & 12)



Post Office  
Telecomms.  
Headquarters  
M 2. 2. 3.

Paper W  
Circulation  
C.B. & AUTO.

ISSUES			
G	NEW FORMAT	26 - 6 - 68	
F	AMENDMENT TO CABLING PANELS 6 & 7	5 - 3 - 62	
	E.S.R. 51/1	27 - 7 - 39	

APPARATUS SCHEDULE  
 1. AUTOMATIC WORKING

NOTES:

GENERAL

1. This Dgm. shows Plans 5 & 5A using Bell Set No.39A or 44 at the Main. The facilities are given on Dgm.N1428.
2. The second extension may be connected direct to the Main instead of via the first extension if economical in cable. See Pages 1 and 2.
3. If an Extn. Bell is required connect in place of strap between BT1-BT2(Main) or BT3-BT4 (Night Service Extn.)
4. In early pattern of Tele.No.248---minus base the connexions to T6 & T8 were reversed. The early terminal number is shown in brackets.

MAIN. USING BELL SET NO.39A.

5. The Dgm. shows the connexions for Plan 5. For Plan 5A remove straps B1-B2, B3-B4, B20-B21, B23-B24. Connect straps B21-B22 & B24-B25.
  6. Remove dummy plates covering press-buttons & screw plates on to side of filter suppression No.26A mounting bracket.
  7. Early supplies of Bell Set No.39A were fitted with filter suppression No.6A.
- MAIN. USING BELL SET NO.44.
8. The Dgm. shows the connexions for Plan 5. For Plan 5A remove straps B1-B2, B3-B4, B31-B32, B34-B35. Connect straps B32-33 & B35-B36.
  9. Remove dummy plate covering press-buttons & screw plates to the side of the indicator.

EXTENSIONS.

10. Connect coils of Bell No.56A and Bell No.65A unmounted in Teles.No.326 CB & No.327--- in parallel.
11. Night Service facilities may be provided at either extension but are shown on Extn.1 of this diagram.
12. Fit a Key No.302A-1 & appropriate Plungers in position B of the Telephone. Fit Label No.252E.
13. If intercommunication is required between extensions connect 2 Cells Dry R40 in place of strap between BT2-BT8 at extension 2.

MAIN	FIRST EXTENSION		SECOND EXTENSION
	With Night Service	Without Night Service	
1 Bell Set No.39A or 44	1 Bell No.56A	1 Block Terminal No.20/8	1 Block Terminal No.20/8
1 Tele.No.248---minus base	1 Block Terminal No.20/8	1 Key No.302A-1	1 Key No.302A-1
1 Bell No.64D	1 Key No.302A-1	1 Label No.252E	1 Label No.252E
1 Box Battery for 3 Dry Cells	1 Label No.252E	And Either	And Either
3 Cells Dry R40	1 Tele.No.328---	1 Tele.No.326 CB minus Cord	1 Tele.No.326 CB minus Cord
	1 Cord Inst.No.5/14B---	1 Dial Auto.No.12---	1 Dial Auto.No.12---
	1 Part No.1/SPL/325	1 Cord Inst.No.5/28E 5"	1 Cord Inst.No.5/28E 5"
	Or	1 Cord Inst.No.5/14B---	1 Cord Inst.No.5/14B---
	1 Tele.No.321---	1 Part No.1/SPL/325	1 Part No.1/SPL/325
	1 Part No.1/DPL/361	Or	Or
		1 Tele.No.327---	1 Tele.No.327---
		1 Part No.1/DPL/361	1 Part No.1/DPL/361
			When Intercommunication between Extns. is req'd.
			1 Box Battery for 3 Dry Cells
			2 Cells Dry R40

2. C.B. WORKING.

For C.B. working fit C.B. Type Teles. Dial Auto.No.12--- and Cord Inst.No.5/28E 5" will not be required when using Tele.No.326 C.B. Minus Cord.

