

C.B. AND AUTOMATIC SYSTEMS
SUBSCRIBER'S EXTENSION PLANS 7 & 7A
(INTERNAL AND EXTERNAL) USING BELL-SET No.39A OR No.44

NOTES:—

GENERAL

- 1 THIS DGM. SHOWS PLAN 7 & 7A USING BELL-SET No.39A OR No.44 AT THE MAIN WITH EITHER INTERNAL OR EXTERNAL EXTENSION. THE FACILITIES ARE GIVEN ON DGM.N1429.
- 2 IF AN EXTENSION BELL IS REQUIRED CONNECT IN PLACE OF STRAP BETWEEN BT1-BT2 (MAIN) OR BT3-BT4 (EXTN). A TREMBLER BELL MAY ALSO BE CONNECTED BETWEEN BT7 & BT10.
- 3 IN EARLY PATTERNS OF TELE.No.248... MINUS BASE THE CONNEXIONS TO T6 & T8 WERE REVERSED. THE EARLIER TERMINAL NUMBER IS SHOWN IN BRACKETS.

MAIN

USING BELL-SET No.39A

- 4 THE DGM. SHOWS THE CONNEXIONS FOR PLAN 7. FOR PLAN 7A REMOVE STRAPS B1-B2, B3-B4, B20-B21, B23-B24. CONNECT STRAPS B21-B22 & B24-B25.
- 5 FOR INTERNAL EXTENSION WORKING REMOVE DUMMY PLATE COVERING PRESS-BUTTON AND SCREW PLATE ON TO SIDE OF FILTER SUPPRESSION No.26A MOUNTING BRACKET.
- 6 EARLY SUPPLIES OF BELL-SET No.39A WERE FITTED WITH FILTER SUPPRESSION No.6A.

USING BELL-SET No.44

- 7 THE DGM. SHOWS THE CONNEXIONS FOR PLAN 7. FOR PLAN 7A REMOVE STRAPS B1-B2, B3-B4, B31-B32 AND B34-B35. CONNECT STRAPS B32-B33 & B35-B36.
- 8 FOR INTERNAL EXTENSION WORKING REMOVE DUMMY PLATE COVERING PRESS-BUTTON AND SCREW PLATE TO THE SIDE OF THE INDICATOR.
- 9 FOR EXTERNAL EXTENSION REMOVE STRAP B17-B18. CONNECT STRAP B13-B14 AND B16-B17.

EXTENSIONS

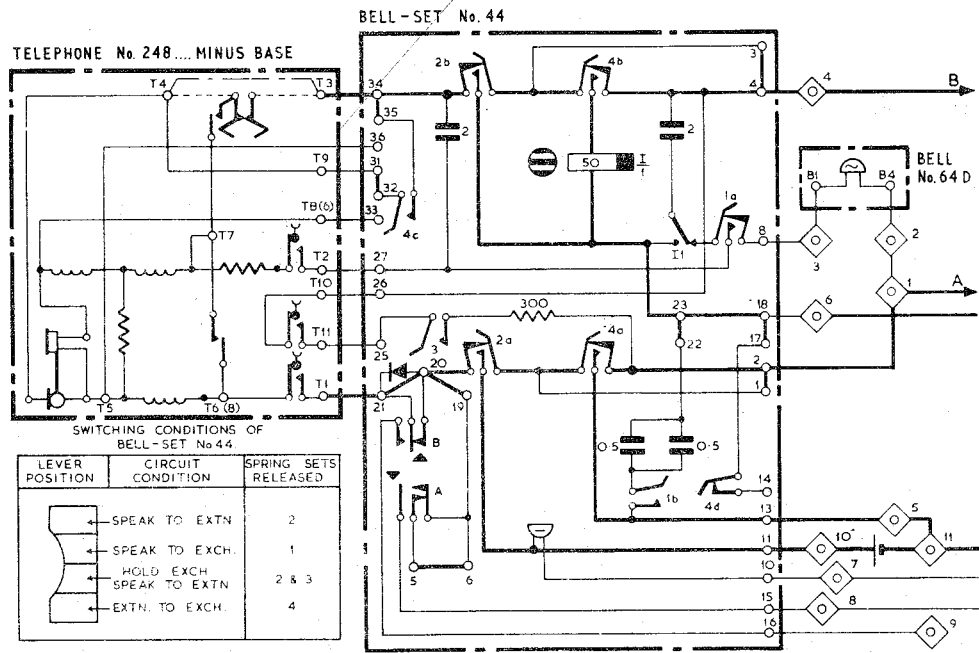
- 11 CONNECT COILS OF BELL No.56A IN PARALLEL.
- 12 FIT A KEY No.302-1 AND APPROPRIATE PLUNGER IN POSITION B OF THE TELEPHONE. FIT LABEL No.252E.
- 13 WHEN USING TELE.No.332... REPLACE CORD INSTRUMENT No.2/948 BY No.3/62B.

APPARATUS SCHEDULE	
MAIN	
WITH INTERNAL EXTENSION	WITH EXTERNAL EXTENSION
1 BELL-SET No.39A OR No.44 1 TELEPHONE No.248... MINUS BASE 1 BELL No.64D 1 BOX BATTERY No.3 3 CELLS DRY R40	1 BELL-SET No.39A OR No.44 1 TELEPHONE No.248... MINUS BASE 1 BELL No.64D 1 BOX BATTERY No.3 3 CELLS DRY R40 1 BELL-SET No.26 1 GENERATOR No.26AN

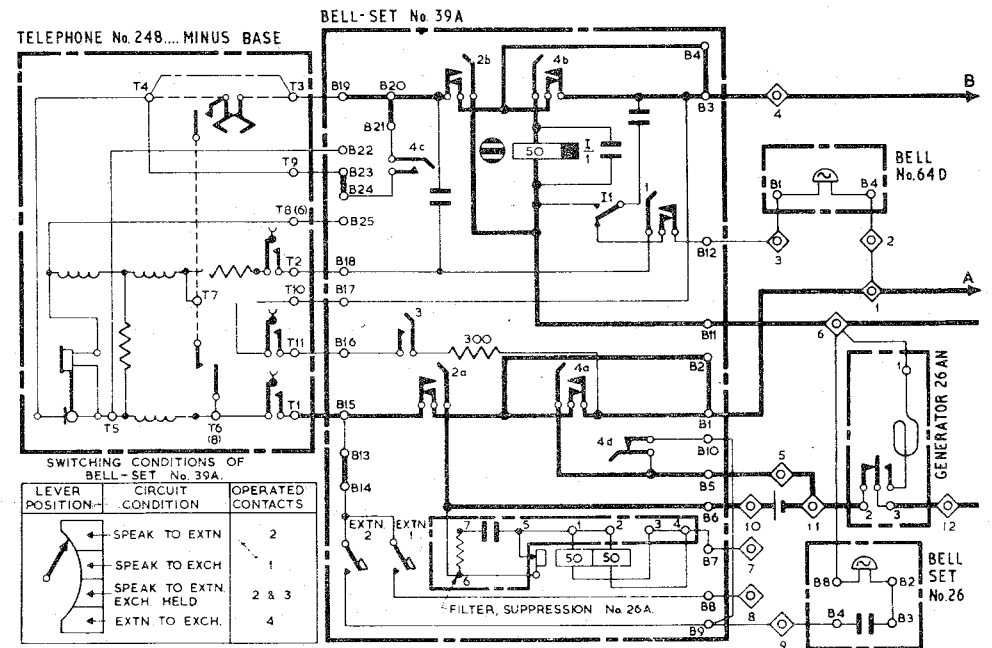
EXTENSION	
INTERNAL	EXTERNAL
1 BELL No.56A (NOTE 11) 1 BLOCK TERMINAL No.35A 1 KEY No.302A-1 1 LABEL No.252E AND EITHER 1 TELEPHONE No.328... 1 PART No.1/SPL/325 1 CORD INST. No.4/57B... OR 1 TELEPHONE No.321... 1 PART No.1/DPL/36	1 GENERATOR No.26AP 1 BLOCK TERMINAL No.52A AND EITHER 1 TELEPHONE No.1/232 1 BELL-SET No.26 OR 1 TELEPHONE No.332... 1 CORD INST. No.3/62B... NOTE 13 OR 1 TELEPHONE No.333...

TELECOMMS 1 QRS COLOUR:—Y DISTN:— GENERAL	ISSUE H G	NEW FORMAT. MADE YELLOW. PAGE 1 REDRAWN. PAGES 1 & 2 MADE PAGE 1. PAGES 3,4 & 5 MADE PAGES 2,3 & 4. MINOR AMENDMENTS. E.M.S. <i>Paul Jones</i> TD 7.1.3 NEW FORMAT. D.C.P	10.8.78 16.7.68
---	-----------------	--	--------------------

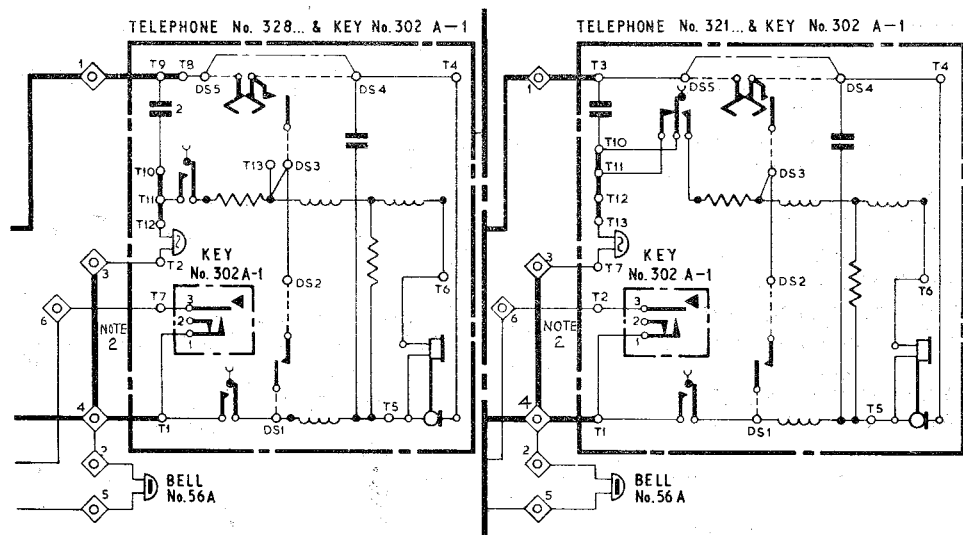
EXPLANATORY OF MAIN USING BELL-SET No. 44 WITH INTERNAL EXTN.



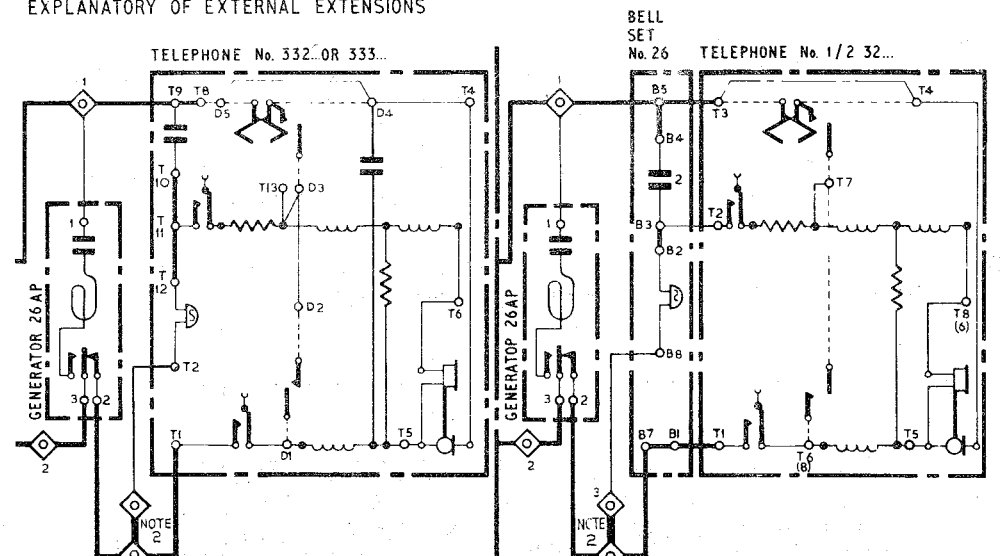
EXPLANATORY OF MAIN USING BELL-SET No. 39A WITH EXTERNAL EXTN.



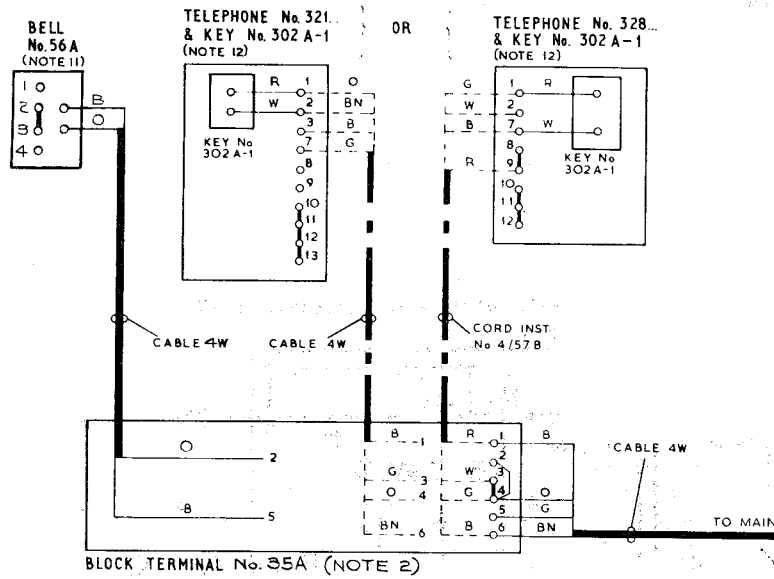
EXPLANATORY OF INTERNAL EXTENSION



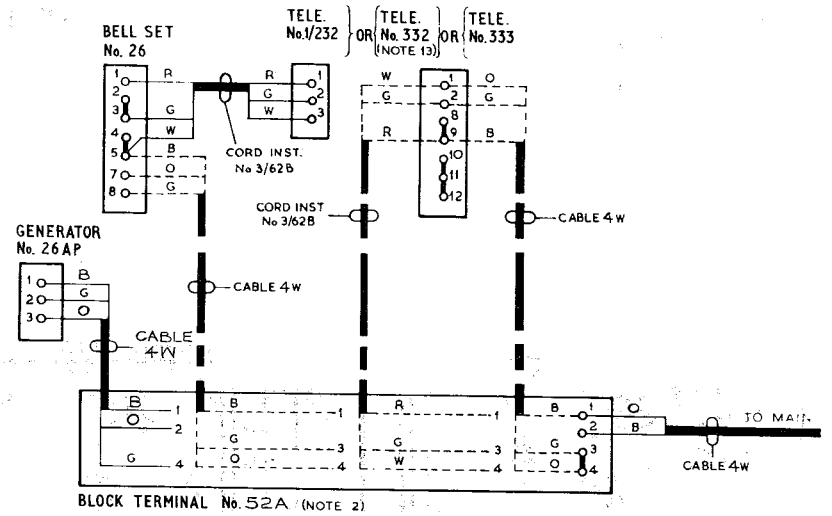
EXPLANATORY OF EXTERNAL EXTENSIONS



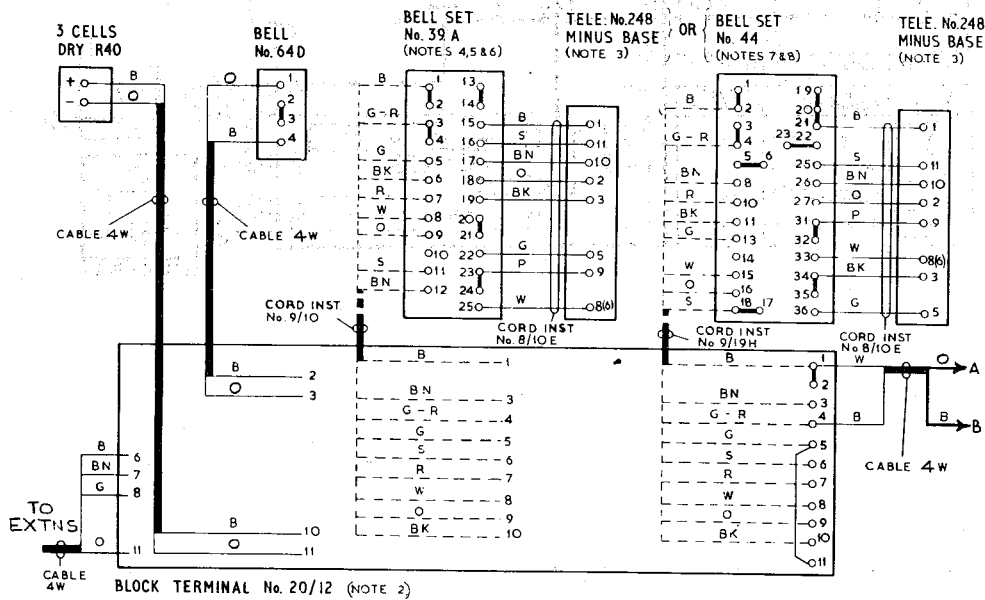
WIRING - EXTENSION (INTERNAL)



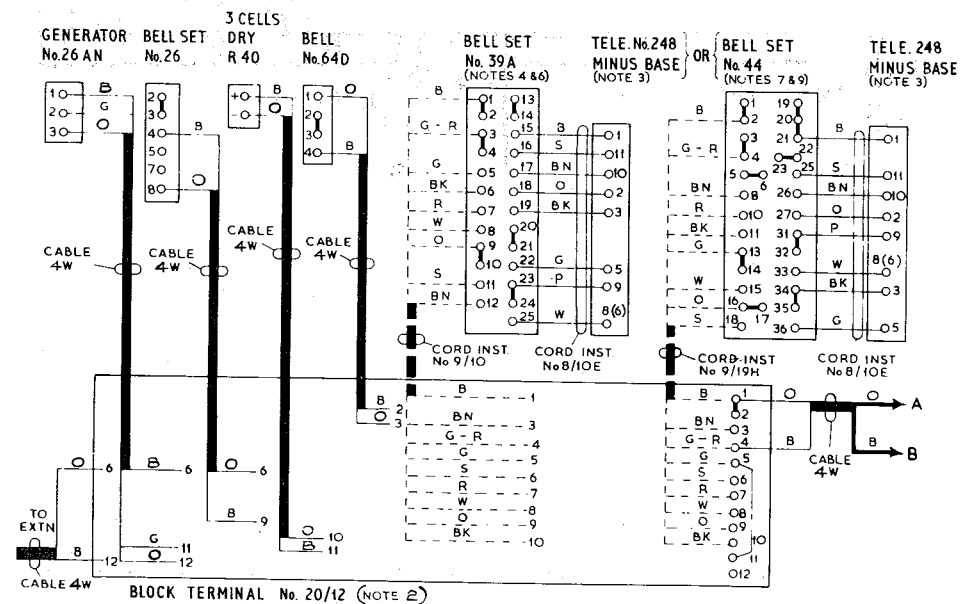
WIRING - EXTENSION (EXTERNAL)



WIRING - MAIN (INTERNAL)

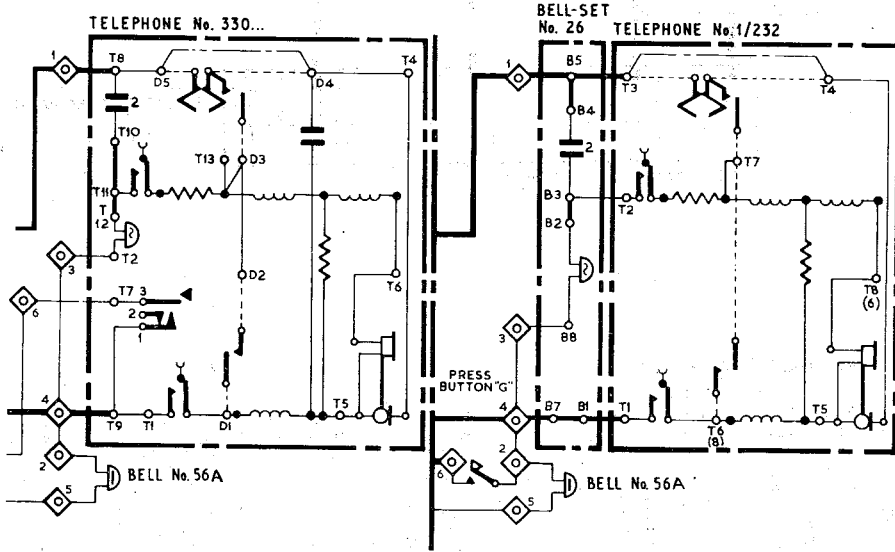


WIRING - MAIN (EXTERNAL)



CB AND AUTOMATIC SYSTEMS
 SUBSCRIBER'S EXTENSION PLANS 7 & 7A
 & EXTERNAL)

EXPLANATORY OF EXTENSION



EXPLANATORY OF MAIN USING BELL-SET No.39 WITH EXTERNAL EXTN.

