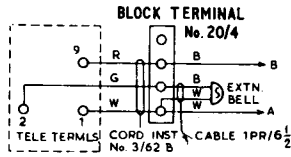


NOTES:

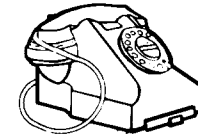
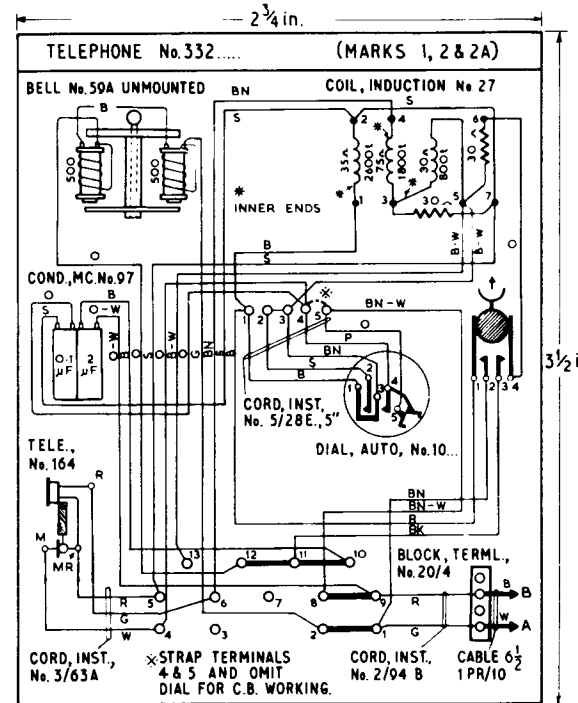
- When Extension Bell is required remove strap from telephone terminals 1 and 2 replace cord inst., No. 2/94B by cord inst., 3/62B and connect Extension Bell on Block Terminal No. 20/4 thus



- Early issues have cord inst. No. 3/62B fitted with G and W conductors strapped on Block Terminal No. 20/4. This strap to be removed when Extension Bell is required.
- Differences between MKS. 1, 2 & 2A of Tele. No. 332... are
 MK. 1 has Receiver, Inset No. 1L in Tele. No. 164.
 MK. 2 has Receiver, Inset No. 2P in Tele. No. 164.
 MK. 2A as for MK. 2 but has Switch Bracket & Plungers of improved design.

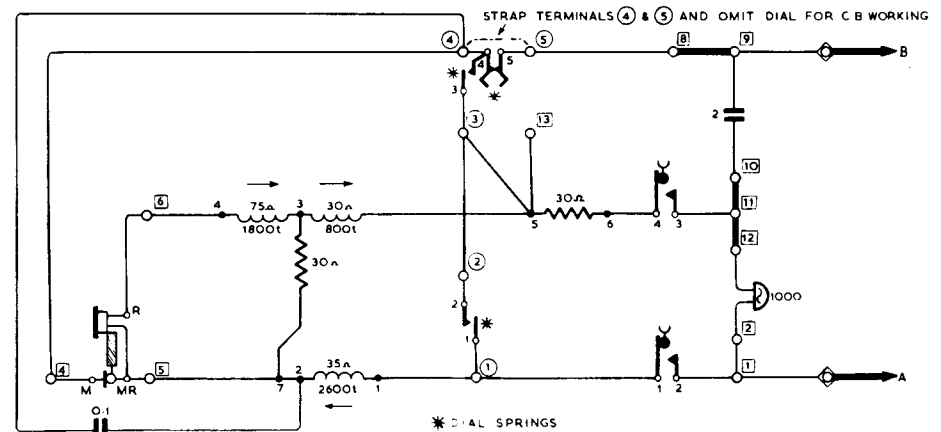
TELEPHONE No. 332
 COMBINED MICROTELEPHONE FOR USE IN C.B. & AUTO. AREAS
 ON DIRECT EXCH. LINES ALTERNATIVE TO TELEPHONE No. 1/232....
 & BELL SET No. 26.

N. 432
 ISSUE E

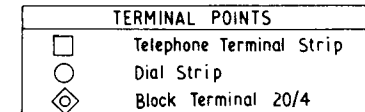


Label to be reduced to dimensions shown.

EXPLANATORY



Direction of windings indicated by arrow thus →



P.O.T.D.D. TD 14.1;	ISSUES			
PAPER: W CIRCULATION GENERAL	ISSUES	E	NEW FORMAT	22 - 2 - 68
		D	RETRACED, NO AMENDMENT	31 - 1 - 57
		D	MARK Nos 2 & 2A AND NOTE 3 ADDED.	3 - 10 - 51
		E.S.R.	S1	