

VACUATION

GENERAL

NOTE: THE LABEL DIAGRAM TO BE REDUCED TO DIMENSIONS GIVEN

BELL-SET No.39A(MARK 1)

USED WITH TELEPHONE No.248CB
BLACK, MINUS BASE

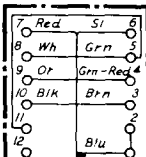
WIRING

N539
28-9-3B
5 PANELS - 1

SW POSNS.	SPRG. OF 'D'
1 SPK TO EXTN.	2
2 " " EXCH (R ¹ SHOW)	1
3 " " EXTN.	2,3
EXCH. HELD	
4 EXTN TO EXCH.	4

CONTACTS OF SPRG SETS 1 & 3 MAKE BEFORE CONTACTS OF SPRING SET No. 2 BREAK WHEN MOVING SWITCH FROM POSITION No. 2 TO POSITION No. 3

* SPRING SETS MARKED WITH * ARE MOUNTED ON TOP



BLOCK TERMINAL No.20/12

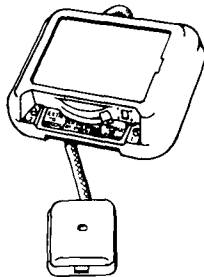
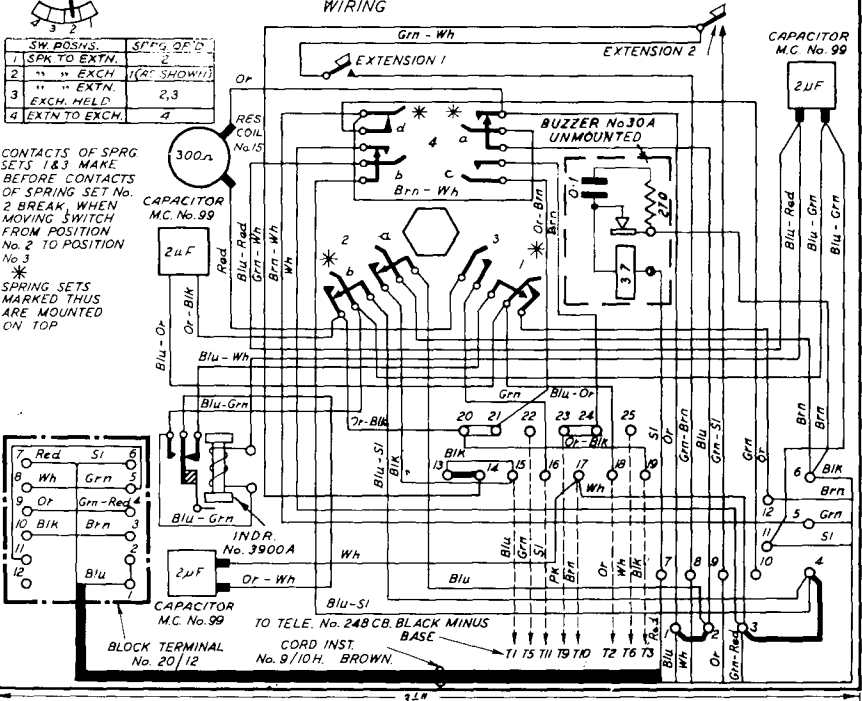
INDR No.3900A
CAPACITOR M.C. No.99
2μF

300Ω RES COIL No.15
CAPACITOR M.C. No.99
2μF

TO TELE. No.248CB. BLACK MINUS BASE
CORD INST. No.9/10H. BROWN.

CAPACITOR M.C. No.99
2μF

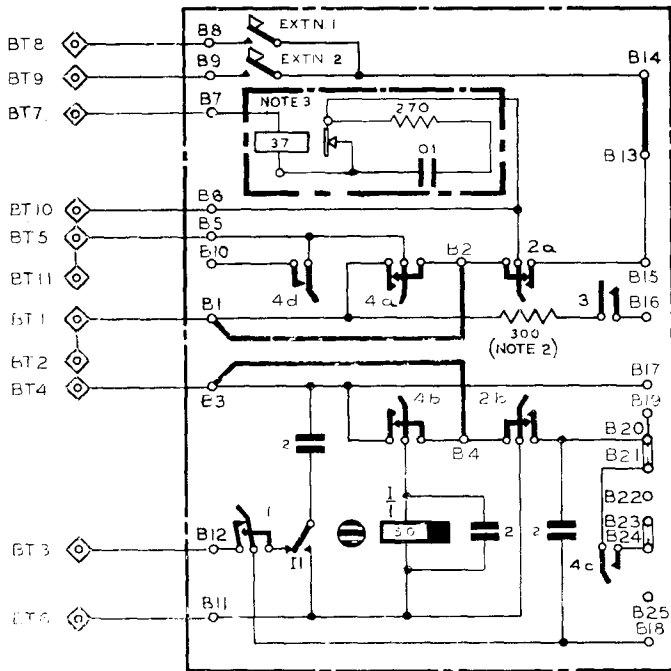
BUZZER No.30A UNMOUNTED



REVISIONS:
1. BLS NO. 39C ADDED TO ADDITIONAL PANELS 7 & 8
2. BLS NO. 39C ADDED TO ADDITIONAL PANELS 7 & 8
3. BLS NO. 39C ADDED TO ADDITIONAL PANELS 7 & 8
4. BLS NO. 39C ADDED TO ADDITIONAL PANELS 7 & 8
5. BLS NO. 39C ADDED TO ADDITIONAL PANELS 7 & 8
6. BLS NO. 39C ADDED TO ADDITIONAL PANELS 7 & 8
7. BLS NO. 39C ADDED TO ADDITIONAL PANELS 7 & 8
8. BLS NO. 39C ADDED TO ADDITIONAL PANELS 7 & 8
9. BLS NO. 39C ADDED TO ADDITIONAL PANELS 7 & 8
10. BLS NO. 39C ADDED TO ADDITIONAL PANELS 7 & 8
11. BLS NO. 39C ADDED TO ADDITIONAL PANELS 7 & 8
12. BLS NO. 39C ADDED TO ADDITIONAL PANELS 7 & 8
13. BLS NO. 39C ADDED TO ADDITIONAL PANELS 7 & 8
14. BLS NO. 39C ADDED TO ADDITIONAL PANELS 7 & 8
15. BLS NO. 39C ADDED TO ADDITIONAL PANELS 7 & 8
16. BLS NO. 39C ADDED TO ADDITIONAL PANELS 7 & 8
17. BLS NO. 39C ADDED TO ADDITIONAL PANELS 7 & 8
18. BLS NO. 39C ADDED TO ADDITIONAL PANELS 7 & 8
19. BLS NO. 39C ADDED TO ADDITIONAL PANELS 7 & 8
20. BLS NO. 39C ADDED TO ADDITIONAL PANELS 7 & 8
21. BLS NO. 39C ADDED TO ADDITIONAL PANELS 7 & 8
22. BLS NO. 39C ADDED TO ADDITIONAL PANELS 7 & 8
23. BLS NO. 39C ADDED TO ADDITIONAL PANELS 7 & 8
24. BLS NO. 39C ADDED TO ADDITIONAL PANELS 7 & 8
25. BLS NO. 39C ADDED TO ADDITIONAL PANELS 7 & 8
26. BLS NO. 39C ADDED TO ADDITIONAL PANELS 7 & 8
27. BLS NO. 39C ADDED TO ADDITIONAL PANELS 7 & 8
28. BLS NO. 39C ADDED TO ADDITIONAL PANELS 7 & 8
29. BLS NO. 39C ADDED TO ADDITIONAL PANELS 7 & 8
30. BLS NO. 39C ADDED TO ADDITIONAL PANELS 7 & 8

W

BELL-SET No 39A
(EXPLANATORY - SWITCH IN POSN. 2)



- NOTES:-
1. THE BELL SET No. 39A DIFFERS FROM BELL SET No. 39 IN RESPECT OF SPRING SET No. 4C WHICH NOW CAN BE USED EITHER TO SHORTCIRCUIT THE DIAL SPRINGS (PLAN 7) OR TO SHORTCIRCUIT THE RECEIVER (PLAN 7A).
 2. EARLIER SUPPLIES OF BELL-SET No. 39A ARE FITTED WITH 100 Ω RESISTORS.
 3. EARLIER SUPPLIES OF BELL-SET No. 39A ARE FITTED WITH A BUZZER No. 24A UNMTD. AND A FILTER SUPPRESSION No. 6A OR No. 26A.

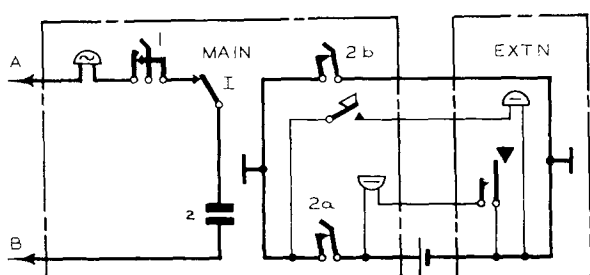
CIRCULATION

GENERAL

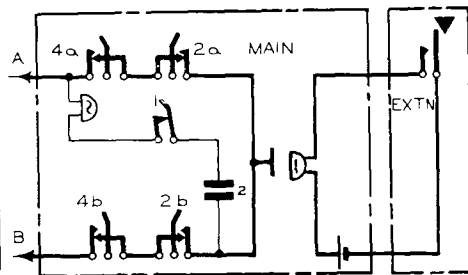
BELL-SET No. 39 & 39A (MARK I)

N539
8 PANELS-3
28-9-38

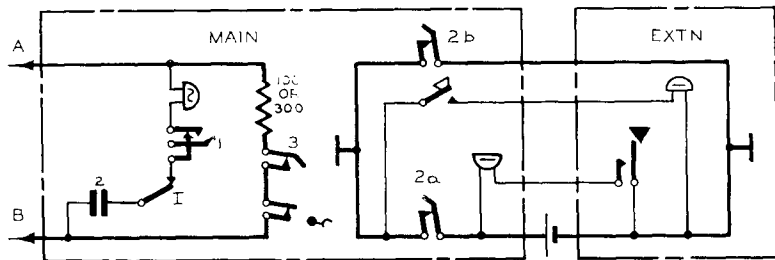
SWITCHING CONDITIONS



POSN 1
SPEAK TO EXTN (B S 39 & 39A ON PLAN 7 & 7A)



POSN 2
SPEAK TO EXCH (BS 39 & 39A ON PLAN 7 & 7A)



POSN 3
SPEAK TO EXTN EXCH HELD
(B S 39 & 39A ON PLAN 7 & 7A)

BUZZER No. 30A W/24A PANELS 5, 6, 7 & 8 YELLOW	17-3-36	G
B.S. 39A & 39C NOTE 3 ADDED	2-4-37	F
RES. CH. No. 75 AMER. TO IND. SW. B.S. 39	25-11-38	E
B.S. No. 39C ADDED TO ADDITIONAL PANELS 7 & 8	26-5-39	D
CHG. FT. II. P. 127. 128. 129. 130. 131. 132.	28-9-38	C
CHG. FT. III. P. 133. 134. 135. 136. 137. 138.	28-9-38	B
CHG. FT. IV. P. 139. 140. 141. 142. 143. 144.	28-9-38	A
SUPERSESSION NOTE. 3 B S 39A ADDED	NO 6 47 A	

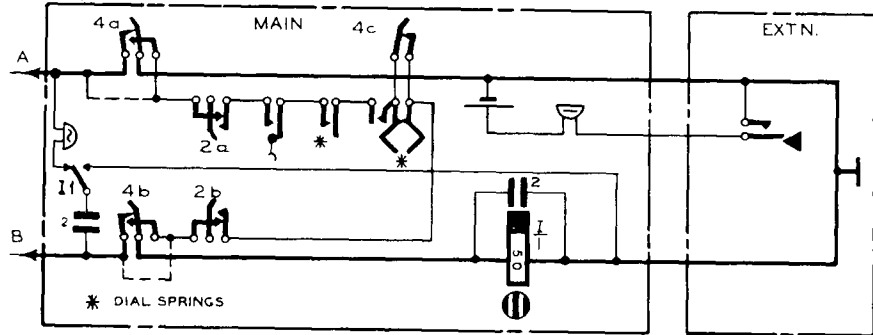
AMENDMENT

W

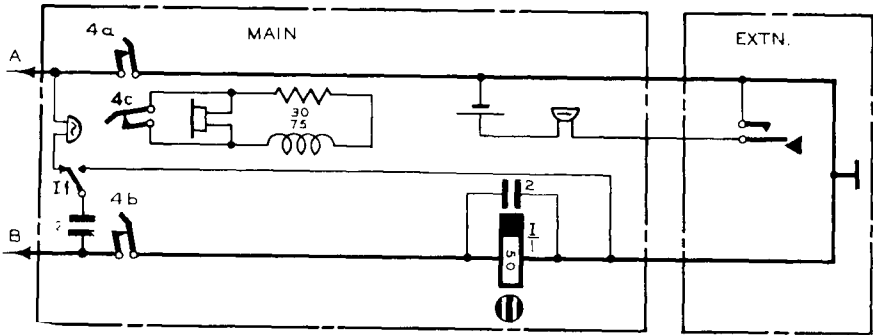
N 539

8 PANELS - 4

SWITCHING CONDITIONS



POSN. 4
EXTN TO EXCH
(B. S. 39 & 39A ON PLAN 7
ALSO B. S. 39 ON
PLAN 7A BY REMOVING
STRAPS SHOWN
DOTTED)



POSN. 4
EXTN TO EXCH
(B. S. 39A ON PLAN 7A
ONLY)

NOTE :-
SPRING SET No. 4C
IS USED TO
SHORT CIRCUIT THE
RECEIVER TO DEFEAT
OVERHEARING
FAULTS EXPERIENCED
ON B. S. 39.

CIRCULATION

GENERAL

NOTE: THE LABEL DIAGRAM, TO BE REDUCED TO DIMENSIONS GIVEN.

BELL-SET No. 39 (MARK 1)

USED WITH TELEPHONE No. 248CB
BLACK, MINUS BASE.

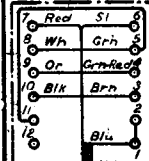
WIRING



SW. POSNS.	SPRG. OP'D.
1 SPR. TO EXTN.	2
2 " " EXTN. (AS SHOWN)	3
3 " " EXTN.	2,3
4 EXCH. HLD.	
4 EXTN. TO EXCH.	4

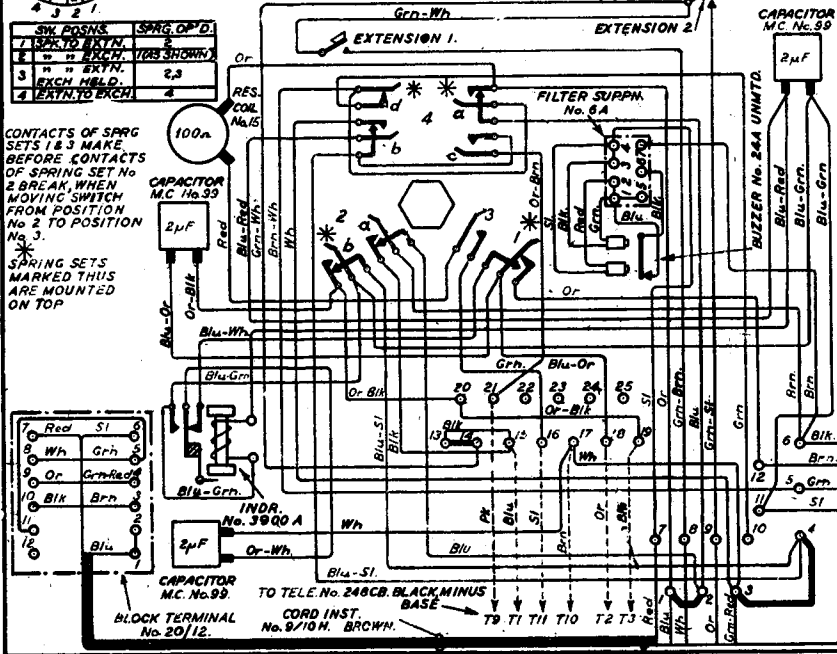
CONTACTS OF SPRG SETS 1 & 3 MAKE BEFORE CONTACTS OF SPRING SET No. 2 BREAK, WHEN MOVING SWITCH FROM POSITION No. 2 TO POSITION No. 3.

* SPRING SETS MARKED THIS ARE MOUNTED ON TOP

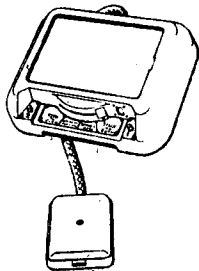


CAPACITOR M.C. No. 99.
BLACK TERMINAL No. 20/12.

TO TELE. No. 248CB BLACK MINUS BASE
CORD INST. No. 9/10H. BRWN.



N539
28-9-38
B3-PANELS 5



WHEN THE TELE. No. 248 IS PROVIDED WITH A CORD INST. No. 8/10E THE EXTRA GREEN AND WHITE CONDUCTORS OF THE CORD ARE CONNECTED TO TERMINALS No. 22 AND No. 25 RESPECTIVELY

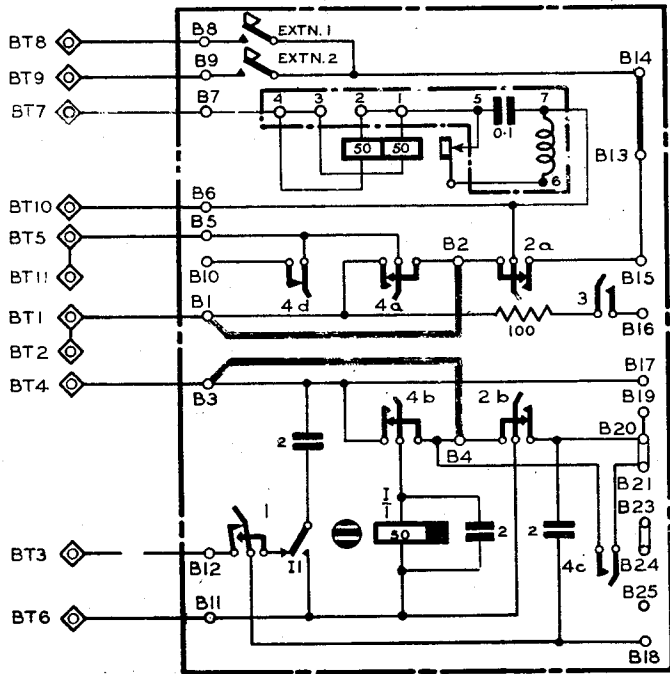
FOR PLAN No. 5 C.B. & AUTO. SYSTEMS SEE DIAGRAM No. N 430B.
FOR PLAN No. 7 C.B. & AUTO. SYSTEMS SEE DIAGRAM N 4310.

BUZZER W/ON WAS 248 PANELS 5, 7 & 8 FOLLOW 17-359 G
TO 500LAW 3 BLVD NY
TO NO. 39 C. ADDED TO ADDITIONAL PANELS 7 & 8
SPRING SET AC. HALL L. CLANNON H. No. 4-1-41 C
RES. COIL No. 15 WAS No. 12 - 100A
SUPERSESSION NOTE B. S. 39A ADDED 10-6-41 A

AMENDMENT

Y Y

BELL-SET No. 39
(EXPLANATORY - SWITCH IN POSN. 2.)



BELL-SET No. 39C (MARK I)

USED WITH TELEPHONE No. 248 CB

WIRING

CALL EXCH.

N539

28-9-38
8 PANELS-7

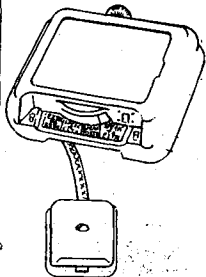
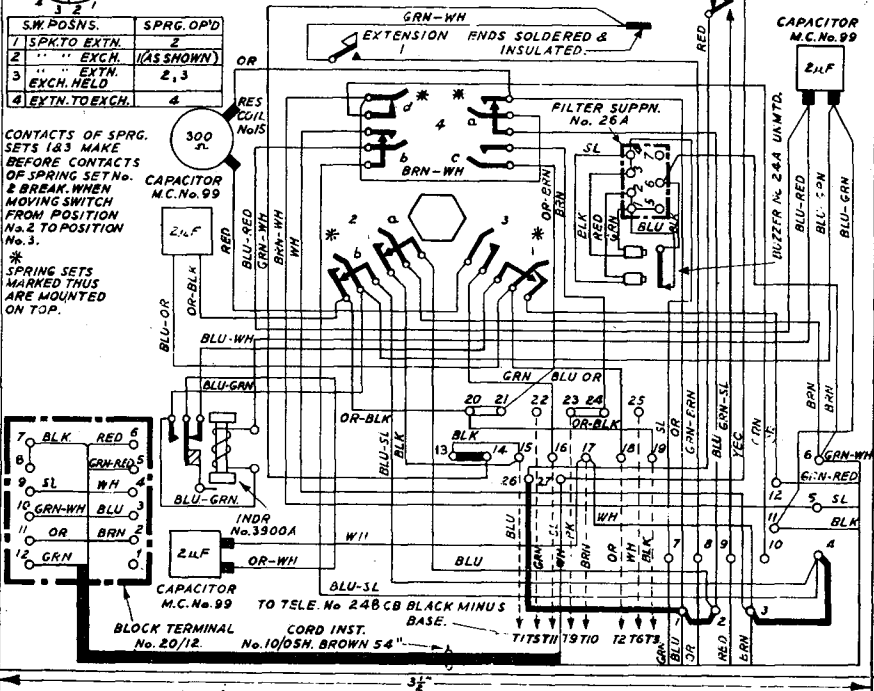
GENERAL

BUZZER No. 39A WAS 34A. PANELS 3, 6, 7 & 8 YELLOW.	17-3-50 G
E/S 39A & 39C NOTE 3 ADDED.	2-4-52 F
RESISTOR COIL NO IS AMENDED TO 300Ω ON B/S 39 C.	23-9-50 E
D/S No. 39C ADDED TO ADDITIONAL PANELS 7 & 8	26-5-50 D
SPRING SET 4C PANEL 2 CONNECTIONS REVERSED	11-8-48 C
RES COIL No. 15 WAS No. 12 - 1000Ω	28-2-48 B
SUPERSESSION NOTE 6 B/S 39A ADDED	30-6-47 A

S.W. POSNS.	SPRG. OP'D
1 SPK. TO EXTN.	2
2 " " EXCH.	1 (AS SHOWN)
3 " " EXTN.	2, 3
4 EXTN. TO EXCH.	4

CONTACTS OF SPRG. SETS 1 & 3 MAKE BEFORE CONTACTS OF SPRING SET No. 2 BREAK. WHEN MOVING SWITCH FROM POSITION No. 2 TO POSITION No. 3.

* SPRING SETS MARKED THIS ARE MOUNTED ON TOP.



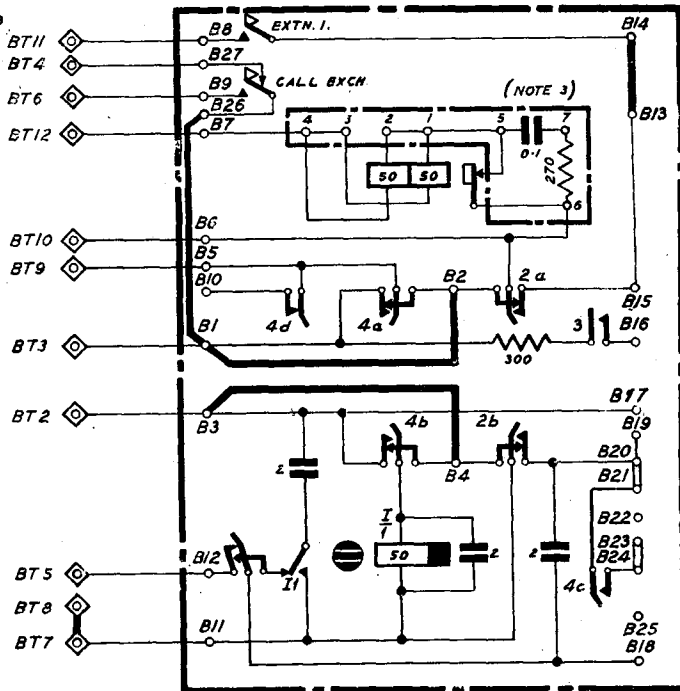
NOTE :-
THE LABEL DIAGRAM TO BE REDUCED TO DIMENSIONS GIVEN.

FOR INTERNAL EXTENSION PLAN Nos. 7 & 7A ONLY AUTO SHARED SERVICE (SEPARATE METERING) SYSTEM.

N539

8 PANELS-8

BELL-SET No. 39C (EXPLANATORY-SWITCH IN POSN. 2)



NOTE:-

1. THE BELL-SET No. 39C DIFFERS FROM THE No. 39A IN THAT THE "CALL EXCHANGE" BUTTON IS FITTED IN PLACE OF EXTN. 2 BUTTON.
2. BELL-SET No. 39C IS FOR USE ON EXTENSION PLAN Nos. 7, & 7A. AUTO. SHARED SERVICE (SEPARATE METERING) SYSTEM.
3. EARLIER SUPPLIES OF BELL-SET No. 39C ARE FITTED WITH FILTER SUPPRESSION No. 6A.