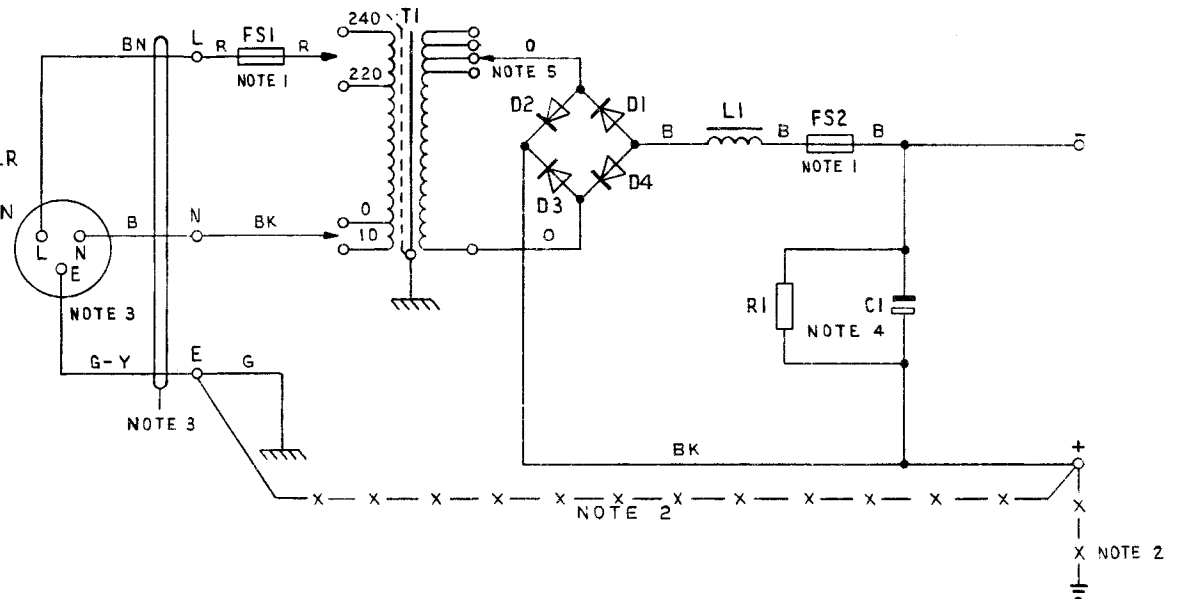


POWER-UNIT No. 70A
 50V 5.0 AMP. DC
 SUPPLY FROM 50Hz AC. MAINS
 FOR PABX 6

N673
 ISSUE D

NOTES:-

1. FS1 :- FUSE No. 36A/3 FS2 :- FUSE No. 36A/7
2. ONE SIDE OF THE OUTPUT (NORMALLY +) SHOULD BE CONNECTED, WITH WIRE, EARTHING 9141 OR 9142, TO THE TELEPHONE SIGNALLING EARTH, WHICH MUST BE PROVIDED USING ONE OF THE METHODS SHOWN IN TI A2 E1006. THE MAINS PROTECTIVE EARTH MUST NOT BE UTILISED FOR THE TELEPHONE SIGNALLING EARTH. THESE TWO EARTHS MUST BE CONNECTED TOGETHER AT THE TERMINAL BLOCK OF THE POWER - UNIT WITH WIRE, EARTHING 9141 OR 9142. SEE WIRING SHOWN THUS - X - X -
3. CORD, FLEXIBLE 3183 Y 1.5mm², AND B.S.3 PIN PLUG TO SUIT SOCKET TO BE REQUISITIONED SEPARATELY AND FITTED LOCALLY. FUSED PLUGS SHALL BE FITTED WITH 13AMP FUSES.
4. VALUES OF RESISTOR AND CAPACITOR CHOSEN BY MANUFACTURER.
5. THESE TAPS ARE SET BY THE MANUFACTURER AND SHOULD NOT NORMALLY NEED TO BE DISTURBED



P O TELECOMMS HQRS PAPER :- W DISTN :- GENERAL	ISSUE			
		D	NEW FORMAT. TRANSFORMER 200V TAPPING REMOVED. WIRE COLOURS CHANGED. NOTES 2 & 3 AMENDED. NOTE 5 ADDED DLW TD 7.2.3	31.1.77
		C	FUSE FS1 WAS FUSE No. 36A/2 KMA	8-1-69