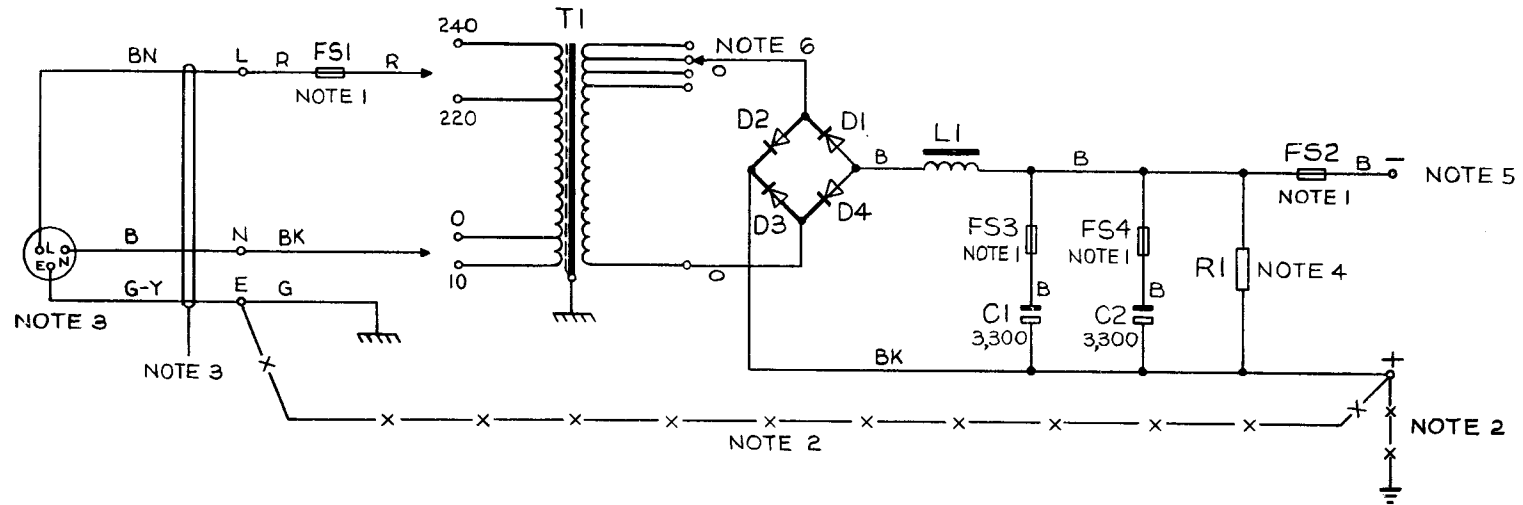


POWER-UNIT No.77A
50V. 8-0A D.C. SUPPLY FROM 50 Hz A.C. MAINS



NOTES :—

- 1 FSI FUSE No.36A/3.0. FS2 FUSE No.36B/8.
FS3 FUSE No.36A/5. FS4 FUSE No.36A/5.
- 2 ONE SIDE OF THE OUTPUT (NORMALLY +) SHOULD BE CONNECTED WITH WIRE EARTHING 9141 OR 9142, TO THE TELEPHONE SIGNALLING EARTH, WHICH MUST BE PROVIDED USING ONE OF THE METHODS SHOWN IN TI A2 E1006. THE MAINS PROTECTIVE EARTH MUST NOT BE UTILISED FOR THE TELEPHONE SIGNALLING EARTH. THESE TWO EARTHS MUST BE CONNECTED TOGETHER. TERMINAL BLOCK OF THE POWER-UNIT WITH WIRE EARTHING 9141 OR 9142. SEE WIRING SHOWN
THUS :— — x — x —
- 3 CORD, FLEXIBLE 3183 Y 1.5 mm² AND BS 3-PIN PLUG TO SUIT SOCKET TO BE REQUISITIONED SEPARATELY AND FITTED LOCALLY. FUSED PLUGS TO BE FITTED WITH 13 AMP FUSES.
- 4 VALUE CHOSEN BY MANUFACTURER.
- 5 OUTPUT CABLING WHEN USED WITH R.M.B.X.No.4— SEE RELEVANT INSTALLATION INSTRUCTIONS.
- 6 THESE TAPS ARE SET BY THE MANUFACTURER AND SHOULD NOT NORMALLY NEED TO BE DISTURBED.

PO TELECOMMS HQRS	ISSUE			
		B	REDRAWN. TRANSFORMER 200V TAPPING REMOVED. WIRE COLOURS, OUTPUT FUSING AND CAPACITOR VALUE CHANGED. NOTES 1, 2 & 3 AMENDED. E.M.S. TD 7.2.3 D.L.W.	2.5.77
		A	EARTH WIRE SPECIFIED. K.M.A.	8.11.67