

AUXILIARY UNITS FOR TELEPHONES, NOS. 710, 711, 740, 741 & 746

FOR COMPLETE LIST SEE DGM. N 4700

OTHER REFERENCES

| | |
|-------------------------|-----------|
| TELEPHONE No. 710 | DGM. N810 |
| TELEPHONE No. 711 | DGM. N811 |
| TELEPHONE No. 740 | DGM. N840 |
| TELEPHONE No. 741 | DGM. N841 |
| TELEPHONE No. 746 | DGM. N846 |

I GENERAL.

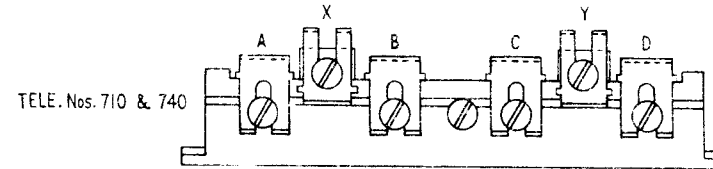
- A** Latching facilities are available on Telephone Nos. 710, 711, 740 and 741. For Nos. 710 and 740 see paragraph 2 opposite. For Nos. 711 and 741 see paragraph 3 on page 2.
- B** The Telephone No. 746 has no latching facility but individual buttons may be made locking as in paragraph 4 on page 2.
- C** For press button types and available engravings see Dgm N849. Note that Button Parts .../DBU/260 and .../DBU/262 are unsuitable for use in Telephone No. 740.
For springsets and switches for use with press buttons see paragraph 7 on page 3.
For auxiliary gravity springsets and switches see paragraphs 8 till on page 4.
For miscellaneous parts see paragraph 13 on page 4.
- D** Local battery adaptors are only available for Telephone Nos. 706, 710 and 711. There are no local battery adaptors for Telephone Nos. 740, 741 and 746.
For Telephone No. 706 see Dgms. N806 and N808.
For Telephone Nos. 710 and 711 see paragraph 12 on page 4.

2 TELEPHONE NOS. 710 AND 740 PRESS BUTTON LATCHING MECHANISMS

A LATCH PLATES.

The illustration shows the latches in the settings as supplied, A, B, C and D being in setting 1 and the X and Y latches in setting 4.

A, B, C & D ARE KEY LATCHES
X & Y ARE GRAVITY SWITCH LATCHES

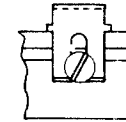


B LATCH SETTINGS.

Telephone Nos. 710... & 740 Latches A, B, C and D can be separately adjusted to any one of three settings, Nos. 1, 2 and 3. Latches X and Y can be adjusted to either setting 4 or 5 but both must be at the same setting.

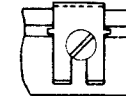
FACILITY

SETTING 1
A, B, C OR D



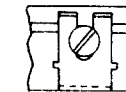
Key plunger locks down when pressed and releases any previously locked plunger.

SETTING 2
A, B, C OR D



Key plunger does not lock, but when pressed will release any previously locked plunger.

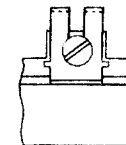
SETTING 3
A, B, C OR D



Key plunger does not lock and its operation does not affect the condition of any other plunger.

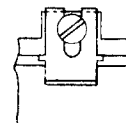
FACILITY

SETTING 4
X AND Y



Replacing the handset trips the latch plate and releases any locked key plunger.

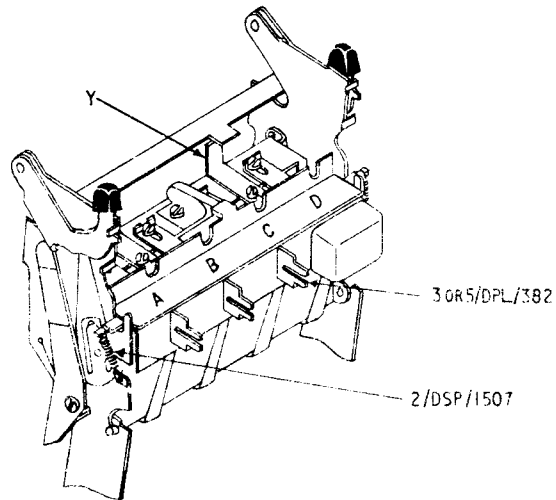
SETTING 5
X AND Y



Replacing the handset does not affect the latch plate.

| | | | | |
|---|-------|---|---|---------|
| P.O. TELECOMMS. HQRS. PAPER: - W DIST. GENERAL | ISSUE | J | PAGE 4: PART 1/DSP/1255 DELETED. PAGE 2: MINOR AMENDMENTS. <i>M. Davis</i> | 9-5-77 |
| | | H | PAGES 1 & 2 MINOR AMENDMENTS. PAGE 3 SWITCH No. 5A-4A & PART 1/DSP/3125 ADDED. NOTE D REWRITTEN. NOTE F ADDED. PAGE 4 PARAGRAPH 10 REWRITTEN. MINOR AMENDMENTS. <i>S.B.W.</i> | 19-9-75 |
| | | G | REDRAWN. <i>L.R.D.</i> TD 7-1-1 | 15-8-72 |
| | | F | TELE. Nos. 740, 741 AND 746 ADDED. <i>L.R.D.</i> | 21-1-69 |
| | | | | |

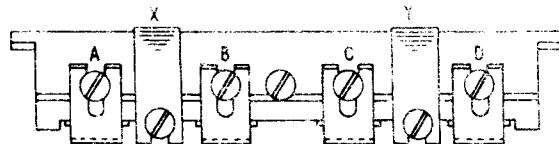
3 TELEPHONE NOS. 711 & 741. PRESS BUTTON LATCHING MECHANISM



NOTES.--

- A The springsets and press buttons required should be fitted to the mechanism before it is mounted in the telephone.
- B Springs, Part 2/DSP/1507 (supplied with Part 1/DFR/107) are fitted as shown to hold mechanism in place.
- C The illustration below shows the latches in the settings as supplied, A, B, C and D in setting 1, and with the X and Y latches positioned so as to give gravity switch restoration of any locked plunger

TELE NOS.
711 & 741



- D If it is required to make the latch plate independent of the gravity switch, the X and Y latches should be either removed or bent clear of the gravity switch bar.
- E Latch settings 1, 2 and 3 are the same as for the Telephone Nos. 710 and 740 see paragraph 2 on page 1.
- F When a double width button, Part 1/DBU/379 is used, the two latches concerned must be at the same setting.

4 TELEPHONE NOS. 710, 740 & 746. INDEPENDENTLY LOCKING PRESS BUTTONS.

- A Telephone No. 710. Fit Part .../DBU/262 with Part 1/DPI/205. The latch for this key plunger should be at setting 3. Any springset illustrated in paragraph 7 on page 3 may be used in this application.
- B Telephone Nos. 740 & 746. Fit Switch No. 23A-1 (1 C/O) or No. 23B-1 (2 C/O). The plunger, Part 1/DPL/1022, must be removed when fitting one of these switches in a Tele. No. 740. No other independently locking actions are possible.

5 TELEPHONE NOS. 711 & 741. INDEPENDENTLY LOCKING PRESS BUTTONS.

- A When only one button is to be provided, and is to give a locking 1 C/O action see paragraph 3, note A on page 3. For other independently locking actions see notes B, C and D below.
- B Loosen the plunger restoring spring and replace the supplied plunger (3/DPL/382) with a part 5/DPL/382.
- C Fit button, Part 1/DBU/378 with Label A6644.
- D Any springset illustrated in paragraph 7 may be used in this application.

6 USE OF PRESS BUTTON WITHOUT SPRINGSET.

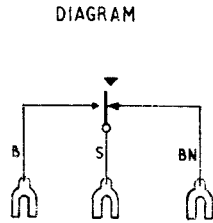
- A A press button may be provided without springset in order to release any previously locked button.
- B In Telephone Nos. 710 and 740 the associated plunger must be supported by a Part 1/DST/26.

WHAT IS A FORM A646 ?
It's the form you should use to advise Headquarters of any apparatus that is defective or causes difficulties in the field.
* Keep a few with you-- and use them
TI CIA 0050 refers

7. SPRINGSETS ASSOCIATED WITH PRESS BUTTONS.

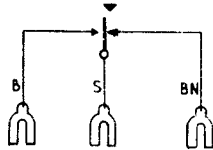
ACTION TITLE USED ON TELEPHONE NOS.

1 C/O SWITCH NO. 5A-4
710 }
711 } 1-4
740 } BUTTONS
741 }
746 SEE NOTE D

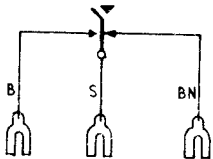


1 C/O SWITCH No.5A-4A 710 SEE NOTE F

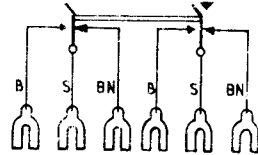
1 C/O SWITCH NO.5A-3
711 1 BUTTON
741 ONLY
SEE NOTE A
706 SEE DGM N808



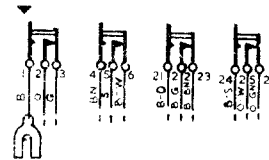
1 C/O LOCKING SWITCH NO.23A-1
SEE NOTE C }
740 } 1-4
746 } BUTTONS
746 } 1 OR 2
746 } BUTTONS



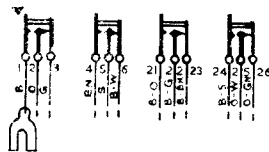
2 C/O LOCKING SWITCH NO.23B-1
SEE NOTE C }
740 } 1-4
746 } BUTTONS
746 } 1 OR 2
746 } BUTTONS



4 C/O PART 1/DSP/1243
SEE NOTE B }
710 }
711 }
740 }
741 }
746 SEE NOTE D



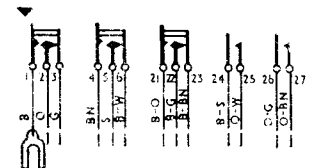
4K PART 1/DSP/1244
SEE NOTE B }
710 }
711 }
740 }
741 }
746 SEE NOTE D



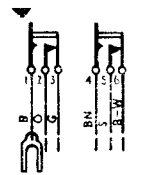
1 C/O PART 1/DSP/1245 710
USING SEE NOTES B & E 711
SPRINGS 740
2,3 & 4 741
1K USING 746 SEE NOTE D
SPRINGS 1,2 & 3



3K 2M PART 1/DSP/1247 710
SEE NOTE B 711
740
741
746 SEE NOTE D



2 C/O PART 1/DSP/3125 710
SEE NOTE B 740
746 SEE NOTE D



NUMBERING OF SPRINGS VIEWED FROM CONTACT END OF SPRINGSET

| | | |
|---|-----|----|
| 7 | --- | 27 |
| 6 | --- | 26 |
| 5 | --- | 25 |
| 4 | --- | 24 |
| 3 | --- | 23 |
| 2 | --- | 22 |
| 1 | --- | 21 |

☐ PLUNGER

NOTES:—

- A Telephone Nos.711 and 741. An extra bracket Part 1/DBR/381 is required when a Switch No.5A-3 is fitted (see Dgms. N811 and N841). Use with Buttons.../DBU/267 or .../DBU/266 to give locking or non-locking action as required.
- B The symbols are physical representations of the springsets and are not the standard symbols as used on circuit diagrams.
- C The Switch No.23...is a locking switch, press to operate, press again to release.
- D The Telephone No.746 can accept either one or two buttons (see N849). One or two plungers Part No.1/DPL/1022 and two pins Part No.1/DPI/203 must be requisitioned separately. These springsets can only be used in a non-locking mode in Telephone No.746.
- E Part 1/DSP/1245. Where only 1 C/O or 1K action is required, Switch No.5A-4 should be used. The transit time of the microswitch is so short that a satisfactory K action is obtained.
- F Switch No.5A-4A is for use on non-multiple stations of HES Nos 3 & 4 only.

8 TELEPHONE NO. 710. AUXILIARY GRAVITY SPRINGSETS.

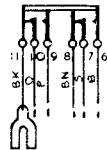
- A These are depicted in the contact condition they assume as detached components. The contacts change over when they are mounted in the telephone and the handset is on the rest. The springsets will be shown in this latter condition on the circuit dgm
- B The Telephone No. 710 auxiliary gravity springsets are quite unsuitable for Telephones No. 740 and 746 and must not be used.

| ACTION | TITLE | USED ON TELEPHONE NO | DIAGRAM |
|--------|-------|----------------------|---------|
|--------|-------|----------------------|---------|

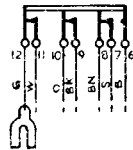
| | | | |
|-------|-----------------|-----|--|
| 1 C/O | PART 1/DSP/1242 | 710 | |
|-------|-----------------|-----|--|



| | | | |
|-------|-----------------|-----|--|
| 2 C/O | PART 1/DSP/1258 | 710 | |
|-------|-----------------|-----|--|



| | | | |
|------------|-----------------|-----|--|
| 2M & 1 C/O | PART 1/DSP/1264 | 710 | |
|------------|-----------------|-----|--|



NUMBERING OF SPRINGS viewed from contact end of springset.



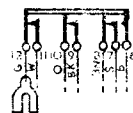
9 TELEPHONE NO. 711. AUXILIARY GRAVITY SPRINGSETS

See paragraph 8 for the numbering of springs and the method of illustrating the springsets

| | | | |
|-------|-----------------|-----|--|
| 1 C/O | PART 1/DSP/1269 | 711 | |
|-------|-----------------|-----|--|



| | | | |
|------------|-----------------|-----|--|
| 2M & 1 C/O | PART 1/DSP/1501 | 711 | |
|------------|-----------------|-----|--|

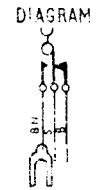


10 TELEPHONE Nos 740 & 746. AUXILIARY GRAVITY SWITCHES.

Switches No.36...and No.19...comprise a bracket carrying 1-3 micro-switches with a common operating lever. The leads from each micro-switch are identical. The switch contacts are depicted in the condition they assume when fitted to a telephone with the handset on its rest.

Switches No.36...will, when available, supersede Switches No.19...

| ACTION | TITLE | SUPERSEDED ITEM |
|--------|-----------------|-----------------|
| 1 C/O | SWITCH No.36A-1 | SWITCH No.19B-1 |
| 2 C/O | SWITCH No.36B-1 | SWITCH No.19D-1 |
| 3 C/O | SWITCH No.36C-1 | SWITCH No.19C-1 |



11 TELEPHONE No.741. AUXILIARY GRAVITY SWITCHES.

As for Telephone Nos.740 and 746 but a Kit No.166A is also required.

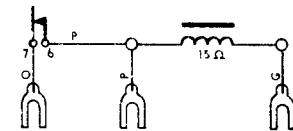
12 TELEPHONE Nos.710 & 711. LOCAL BATTERY ADAPTERS.

A See Paragraph D on Page 1

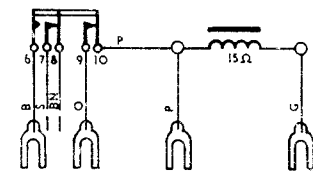
B Springs are depicted in the contact condition they assume as detached components.

The contacts change over when they are mounted in the telephone and the handset is on the rest. The springsets will be shown in this latter condition on the circuit diagram.

| TITLE | USED ON TELEPHONE Nos. | DIAGRAM |
|-----------------------------|------------------------|---------|
| ADAPTER, LOCAL BATTERY No.4 | 710 | |
| ADAPTER, LOCAL BATTERY No.7 | 711 | |



| | | |
|-----------------------------|-----|--|
| ADAPTER, LOCAL BATTERY No.8 | 711 | |
|-----------------------------|-----|--|



13 MISCELLANEOUS

| TITLE | USED ON TELE. Nos. |
|-------|--------------------|
|-------|--------------------|

| | |
|-------------------------|--------------------------|
| PART 2/DST/836 | 710, 711, 740, 741 & 746 |
| STRIP CONNEXION No.155A | |

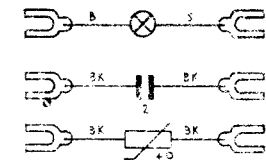
{ 1 OFF FOR 1-6 ADDITIONAL TERMINALS (T20-T25)
2 OFF FOR 7-12 ADDITIONAL TERMINALS (T20-T31)
1 OFF FOR 13-18 ADDITIONAL TERMINALS (T20-T37)

LAMP FITTING Nos.16A, 710 & 740
(USES LAMP No.26)

LAMP FITTING Nos.17A, 711 & 741
(USES LAMP No.41)

CAPACITOR No.7712 2
USED WITH CLIP No.90

| | |
|---|-----------------------------|
| THERM.STOR No.1A-1 | 710, 711, 740, 741 & 746 |
| LAMP SIGNALLING UNIT No.1 (SEE DGM N1901) | |
| LAMP SIGNALLING UNIT No.2 (SEE DGM N1901) | |
| | |



The leads of auxiliary units should be terminated as shown on appropriate diagram, any spare lead should be secured to a spare terminal. Where this is not possible the leads should be insulated from electrical contact with parts of the telephone and from each other.