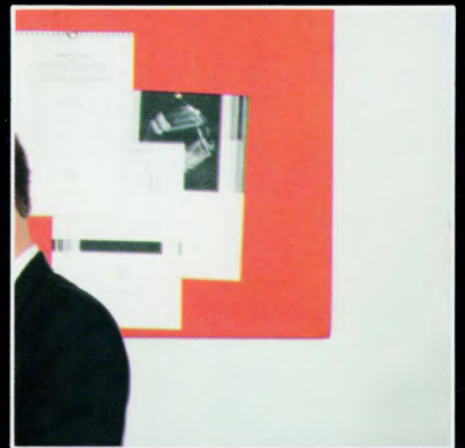
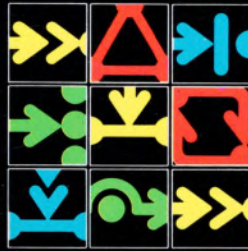


SDX 40

THE DIGITAL TELEPHONE SYSTEM



SDX 40

THE DIGITAL TELEPHONE SYSTEM FROM STC

IMPROVED EFFICIENCY

In today's fast-moving world, your business needs rapid communication. Customers must be able to contact you immediately. Your staff must be able to communicate with each other and externally without delay to be fully efficient and cost effective. At the centre of this is the telephone system – is yours a legacy or a resource?

SDX 40 is the first digital key telephone system on the market. This advanced system improves your communication, increases the efficient

running of your business and has as many features as a large PABX.

But perhaps the most important feature of SDX 40 is that the system is so easy to use. The unique liquid crystal display (LCD) tells you exactly what's happening, including the time. There are no codes to remember, each symbol is described in plain English and a small red attention light lets you know whenever there's anything on the display you need to be aware of.

Pick up

Allows you to answer any ringing phone

PABX recall

When 'P' button pressed, accesses functions of a parent PABX



Forward

Redirects calls to where you are



Confer

Allows 'three way conversations' with one external and two internal numbers



No calls

The 'do not disturb' function



Group

Lets any terminal in a group answer a call (for example a Sales Department)



Intrude

Tells a busy line you need to to speak to them



Call back

Lets you know when a busy number your require is free



Camp on

Keeps trying busy lines or operator until free



Divert

Gets someone else to handle your calls



SDX 40

THE SDX 40 RANGE

FT1

The FT1 terminal has in addition to its 12 pushbutton keys three keys for programming numbers, holding calls and voice calling;

A monitor speaker for handsfree dialling; A call-back facility and a personal store of 10 external numbers.



FT2

The FT2 terminal has all the features of FT1, plus an advanced alpha-numeric liquid crystal display; Nine dedicated feature keys; Five programmable keys; One bright red attention light; Time of day display and access to forty centrally stored external numbers. The FT3 has in addition full hands-free operation.



CONTROL UNIT

There are four Featurephones working through either one or two control units, each compact wall mounted unit supporting up to 20 ports.



FT4

FT4 has all the features of the other phones plus an additional 16 character alpha-numeric LCD display with adjustable angle, showing external number dialled in full, or name of person calling on internal calls.



APPROVED

for use with telecommunication systems run by British Telecommunications in accordance with the conditions in the instructions for use.

S/S INDUSTRY NS/2334/3/E/600032



STC TELECOMMUNICATIONS LTD

OAKLEIGH ROAD SOUTH
NEW SOUTHGATE
LONDON N11 1HB
Telephone 01-368 1234 Telex 21917

Performance figures and data quoted in this document are typical and must be specifically confirmed in writing by STC Telecommunications Ltd before they become applicable to any particular order or contract. The company reserves the right to make alterations or amendments to the detailed specification at its discretion. The publication of information in this document does not imply freedom from patent or other protective rights of STC PLC or others.