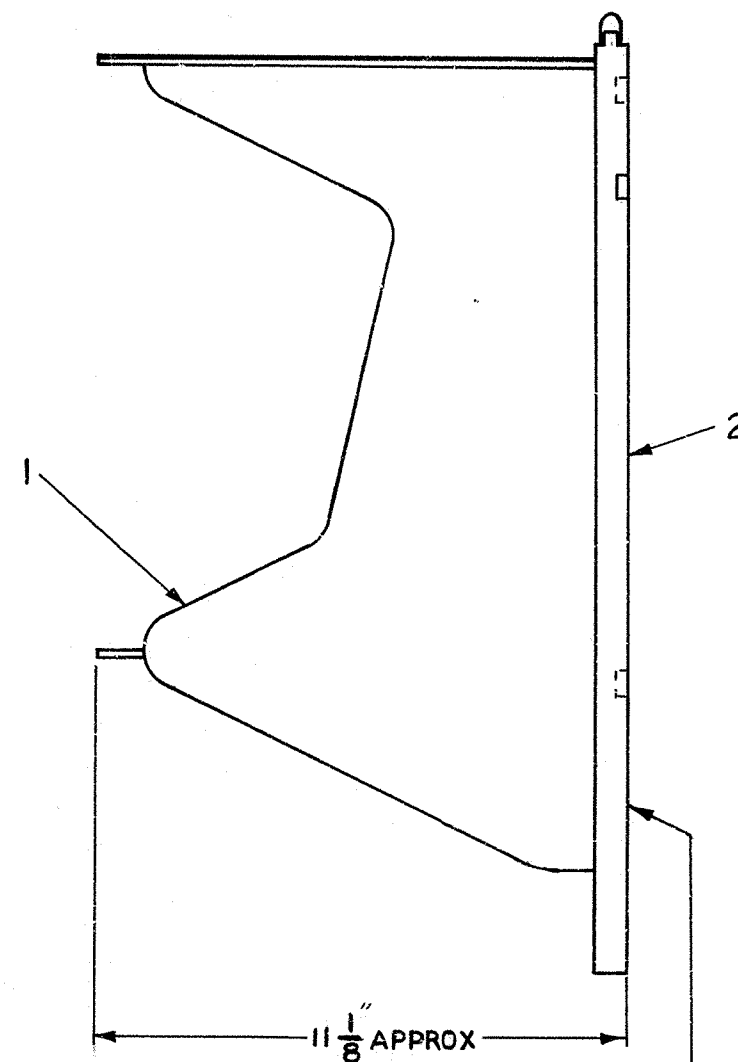
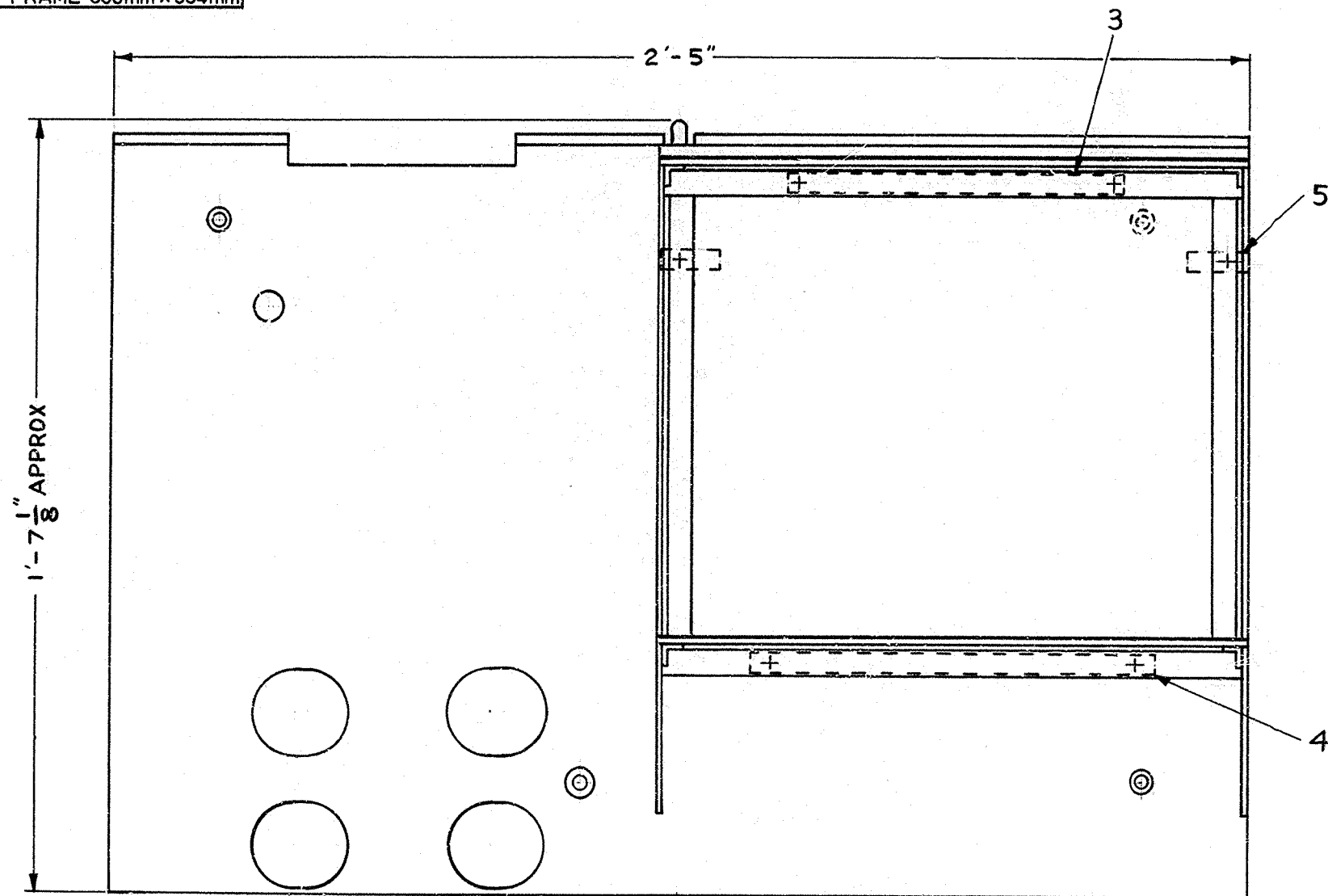


ORIGINAL FRAME 380mm x 554mm

THIRD ANGLE PROJECTION



TYPICAL MARKING
D3/60577 FHB
(SEE SPEC D1000)

SCHEDULE							
ITEM	DESCRIPTION	DRG	No OFF	SCREWS ETC	MATERIAL	FINISH	No OFF
1	CONTAINER No 5	91091	1	SC 1/4 BSW x 7/8 MUSHROOM HD WASHER 1/4 BSW LIGHT GAUGE	MS	ZNP&PASS	6
2	3/60577	60577 SHT 7	1				
3	5/60577	60577 SHT 8	1	WD SC No 10 x 5/8 CSK HD	MS	BLK LAC	2
4	6/60577	60577 SHT 8	1	WD SC No 10 x 5/8 CSK HD	MS	BLK LAC	2
5	7/60577	60577 SHT 8	2	WD SC No 10 x 5/8 CSK HD	MS	BLK LAC	2

A2 A3	DRN AJS CKD TD	REDRAWN. DETS 3 4 & 5 SHOWN AS DETS 13 14 & 12 ON SHTS 8 & 9 RESPECTIVELY. D3/60577 MODIFIED PICTORIALLY TO TAKE CASH COMPART- MENT, FORMERLY SHOWN ON SHT 1 LJG: 20 14.1.71	E	MATERIAL	FINISH	DO NOT SCALE
	CERTIFICATION J M MADDOCK			WALLBOARDS D3/60577		REFERENCES SPEC D1000 & D1475 FILE No. 5811
E-IN-C 4652	DATE 16.7.35	SEE SUPERSEDED ISSUE FOR PREVIOUS AMMENDMENTS	ISSUE	POST OFFICE TELECOMMUNICATIONS HQ TD 2.3.3 SECTION		60577 SHT 3
		AMENDMENT				