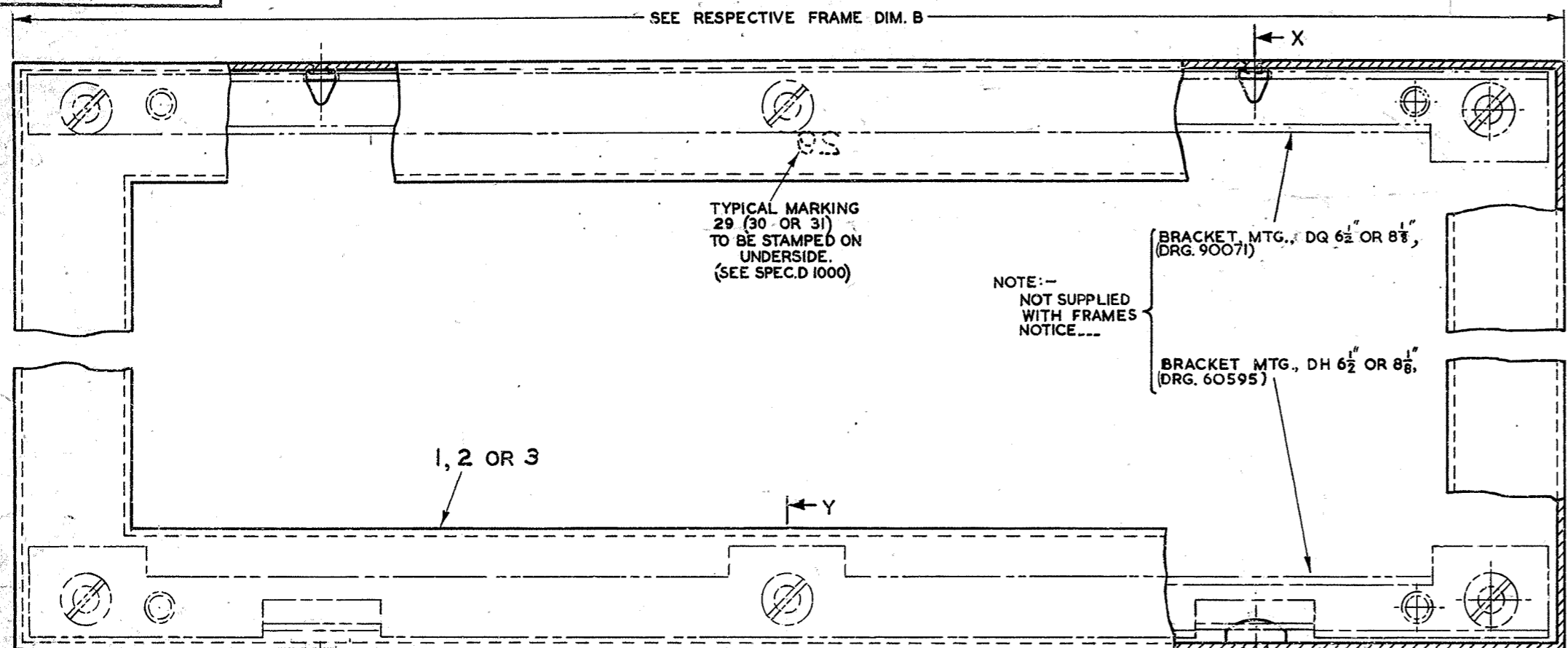


DRG. 60,594

SEE RESPECTIVE FRAME DIM. B



TYPICAL MARKING
29 (30 OR 31)
TO BE STAMPED ON
UNDERSIDE.
(SEE SPEC. D 1000)

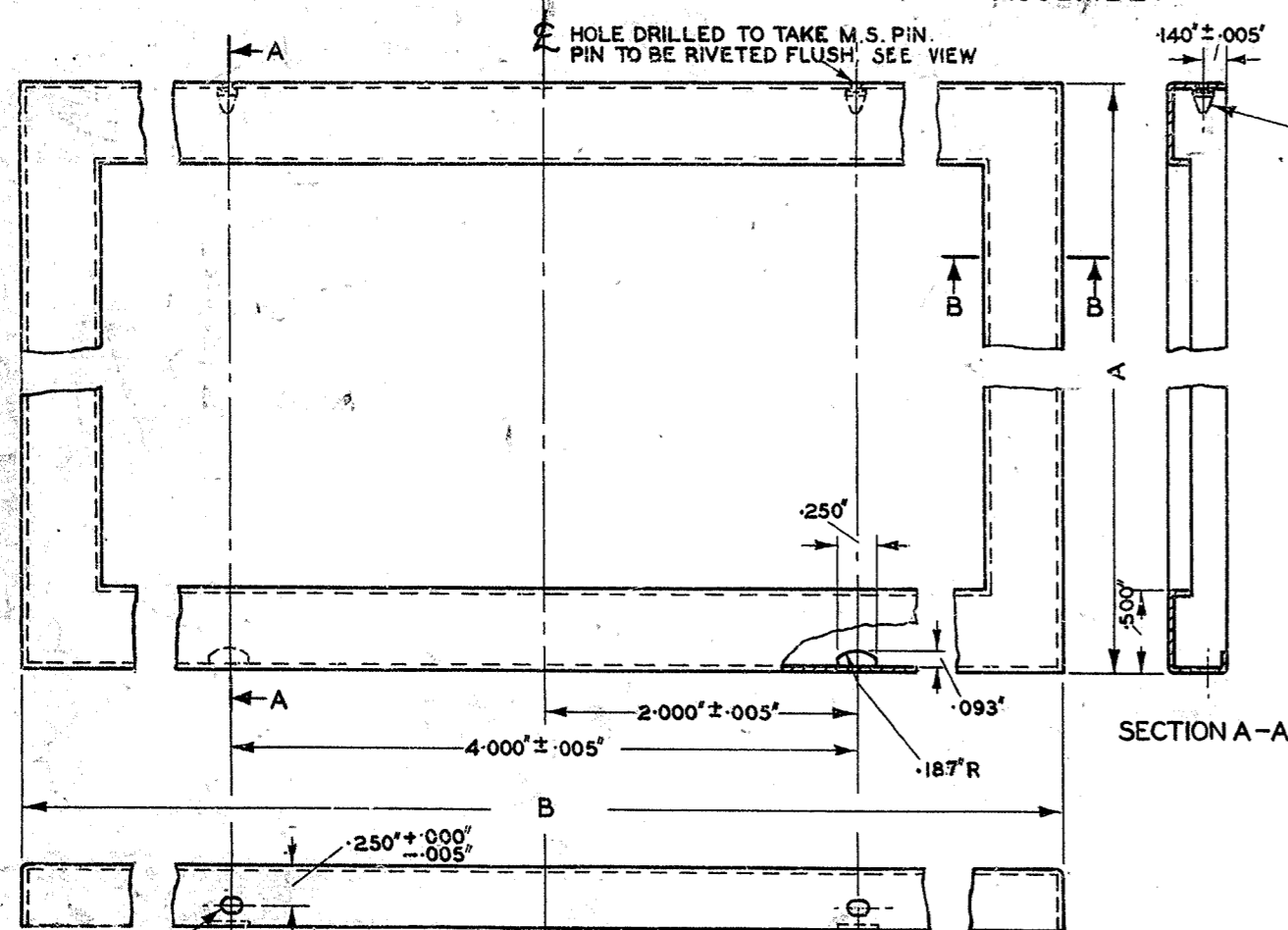
NOTE:--
NOT SUPPLIED
WITH FRAMES
NOTICE....

BRACKET, MTG., DQ 6 1/2" OR 8 1/8",
(DRG. 90071)

BRACKET, MTG., DH 6 1/2" OR 8 1/8",
(DRG. 60595)

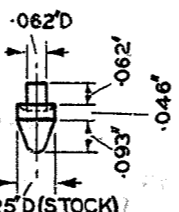
1, 2 OR 3

ASSEMBLY



HOLE DRILLED TO TAKE M.S. PIN.
PIN TO BE RIVETED FLUSH, SEE VIEW

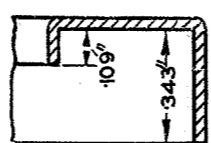
140 ± .005"



DETAIL OF M.S. PIN.
2 OFF.

VIEW SHOWING METHOD OF
RIVETING M.S. PIN.

NOTE:-- FRAME NOTICE INCLUDES PASTEBOARD SHEET.



SECTION B-B

SECTION A-A

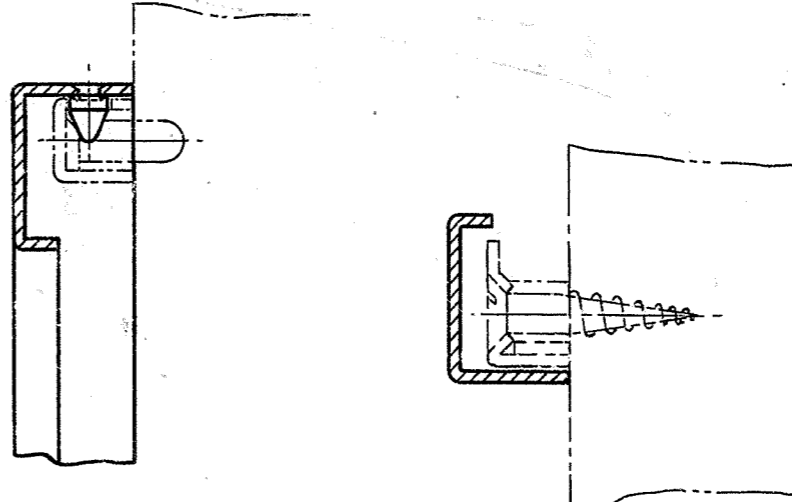
DET.	FOR FRAME NOTICE No.	DIMENSION	
		A ± .005"	B ± .005"
1	29	1-8 3/16"	8 1/4"
2	30	7 1/16"	6 5/8"
3	31	4 3/16"	6 5/8"

2 SLOTTED HOLES .093"x.125" O/L
FULL RAD. AT ENDS.

MATERIAL:-- SEE SPEC D1475.

SCALE:-- 1/4"

TRIM TO THESE LINES. 13" X 24"



SECTION Y-Y

SECTION X-X

SCHEDULE

FRAME NOTICE No.	ITEM	DESCRIPTION	QTY	DRG.	SCREWS ETC.	MTL	FINISH	QTY
29	A	BRACKET, MTG. D.H. 6 1/2"	1	60595	WD. SC. No. 4 x 5/8" CSK. HD.	BR.	---	3
	B	BRACKET, MTG. D.H. 6 1/2"	1	60594	---	---	---	---
30	B	BRACKET, MTG. D.H. 6 1/2"	1	60595	WD. SC. No. 4 x 5/8" CSK. HD.	BR.	---	3
	2	---	1	60594	---	---	---	---
31	B	BRACKET, MTG. D.H. 6 1/2"	1	60595	WD. SC. No. 4 x 5/8" CSK. HD.	BR.	---	3
	3	---	1	60594	---	---	---	---

POST OFFICE ENGINEERING DEPT.
E-IN-C'S OFFICE S BRANCH

DISTRIBUTION
RESTRICTED

REFERENCES
SPEC D1000
SPEC D1475

ASSEMBLY DRG. WIRING DGM

FILE S B11 SPEC ---

SCALE:-- 2 AND AS THIRD ANGLE
1 INDICATED PROJECTION

DECIMAL DIMENSIONS NOT TOLERANCED
SUBJECT TO ±.010" UNLESS OTHERWISE
INDICATED

APP'D. IN S1/3 SECTION DRN. A.J.S.
F.C.S. Tcd. J.E.W.

J.M. MADDOCK. CRD. T.D.
DATE 16-7-35

AMENDMENT SUFFIX

TYPICAL MARKING ADDED.
D.N. F.V.P. H.E.S. R.T.A.D. 10-6-48

Redrawn: Dets 1, 2 & 3 transferred
from Drg. 60595 issue F. Slotted
hole .093" x .125" O/L was .093" D.
Items A & B were dets 4 & 5
(Drg. 60595) *21.11.49*

Dets 1, 2 & 3. Dims A & B were ±.04"
if slotted hole was .093" D.
Note, re reqn. separately deleted.
21.11.49

MATERIAL DELETED.
SPEC D1475 REFERENCE ADDED
21.11.49

NOTE RE BRKT, MTG. AMENDED
21.11.49

VIEW SHOWING METHOD OF RIVETING PIN
ADDED. *20/11/49*

BRKTS MTG. D.H. WERE PART OF
FRAMES NOTICE Nos. 29, 30, & 31.
SCHEDULE DELETED
21.11.49

NOTE ADDED.
21.11.49

FOR SUPERSED

FRAMES NOTICE

Nos. 29, 30 & 31

ASSEMBLY
& DETAILS

DRG. 60,594

E-IN-C 211
GEN. GEN. 10032

S/D.O.

MASTER