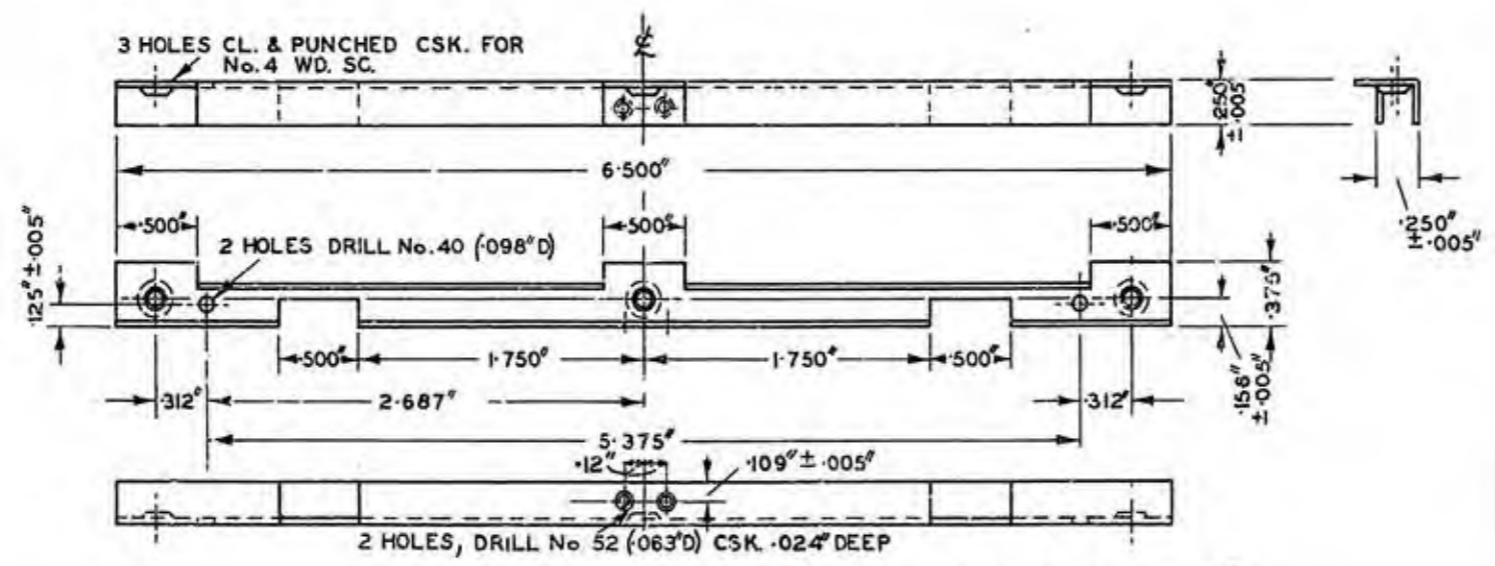


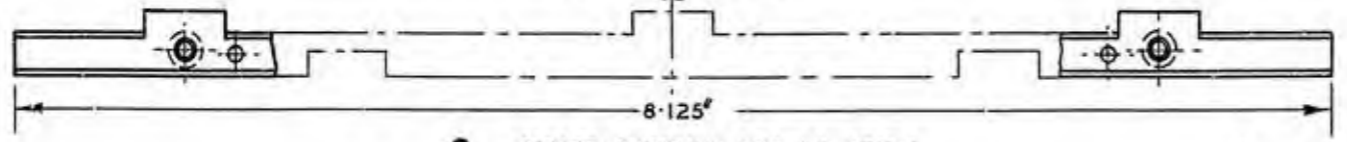
ASSEMBLY

SCHEDULE					
BRACKET M T G.	FOR FRAME NOTICE No. (DRG. 60,594)	DETAIL			
		1	2	3	4
6 1/2"	30, 31	1	-	1	2
8 1/8"	29, 40	-	1	1	2

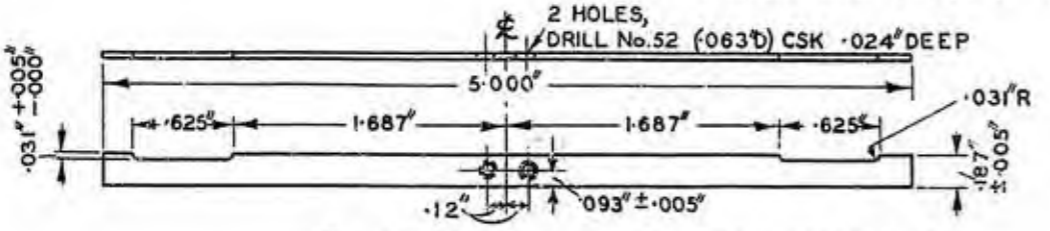
NOTE :-
SPRING TO BE SLIGHTLY BOWED BEFORE
ASSEMBLY TO INCREASE INITIAL TENSION.



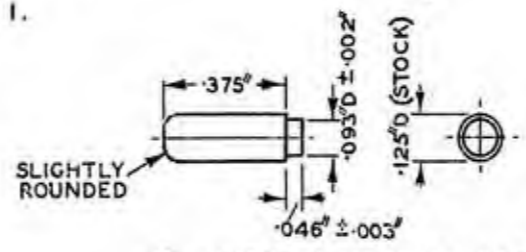
1. MATERIAL :- BRASS CZ108 1/2 H SPEC BS 2870 (.036)
FINISH :- CLEAN.



2. OTHER PARTICULARS AS DET. 1.



3. MATERIAL :- PHOSPHOR BRONZE PBI02 H



4. MATERIAL :- STEEL 220M07 SPEC BS 970

POST OFFICE
TELECOMMUNICATIONS HQRS

DISTRIBUTION
GENERAL

REFERENCES

60,594	SPEC D1000
	SPEC BS 970
	SPEC BS 2870

ASSEMBLY DRG. WIRING DGM

FILE S 811 SPEC.

SCALE: 1/1 AND AS INDICATED THIRD ANGLE PROJECTION

DECIMAL DIMENSIONS NOT TOLERANCED SUBJECT TO .010" UNLESS OTHERWISE INDICATED

APP'D: ME/PD I.2.3. ORN. A.J.S.
F.C.S. TCC. A.J.S.
J. M. MADDOCK. CKD. T. D.
DATE 16.7.35

AMENDMENT SUFFI

Frame. .093" D holes were .085" D W.R.A. H.K. F.C.S.~ 5.7.39	F
Redrawn: Title was, Frame Notice Nos. 29, 30 & 31. Details: Dets. 1, 2 & 3 transferred to Drg. 60594; Dets. 6 & 7, now dets. of Wallboard D 60577, Drg. 60577 Sht.-3-3; Dets. 1 & 2, were dets. 4 & 5 respectively. Holes cl. & punched csk. for No. 4 wd. sc. were cl. & csk. for No. 5 wd. sc. M.S. pin was shown attached, now det. 4; Det. 3 was det. 8, redesigned material was Spring Steel 26 S.W.G. <i>W.A. H.K. F.C.S. 14.4.49.</i>	G
DET. 3. WAS FIXED WITH ONE RIVET ONLY <i>oms. Ludo H.S. 5.3.51</i>	H
DET. 3. MATL. WAS, BS.WG (.048) <i>W.A. H.S. 10.10.54.</i>	J
UPDATED. REF TO FRAME NOTICE NO. 40 ADDED TO SCHEDULE <i>C.P.J. 19.9.80</i>	K

DO NOT SCALE
(A MICROFILM PROCESS PRINT)

FOR SUPERSED

**BRACKET,
MOUNTING, D H...**

**ASSEMBLY
& DETAILS**

S/D/O