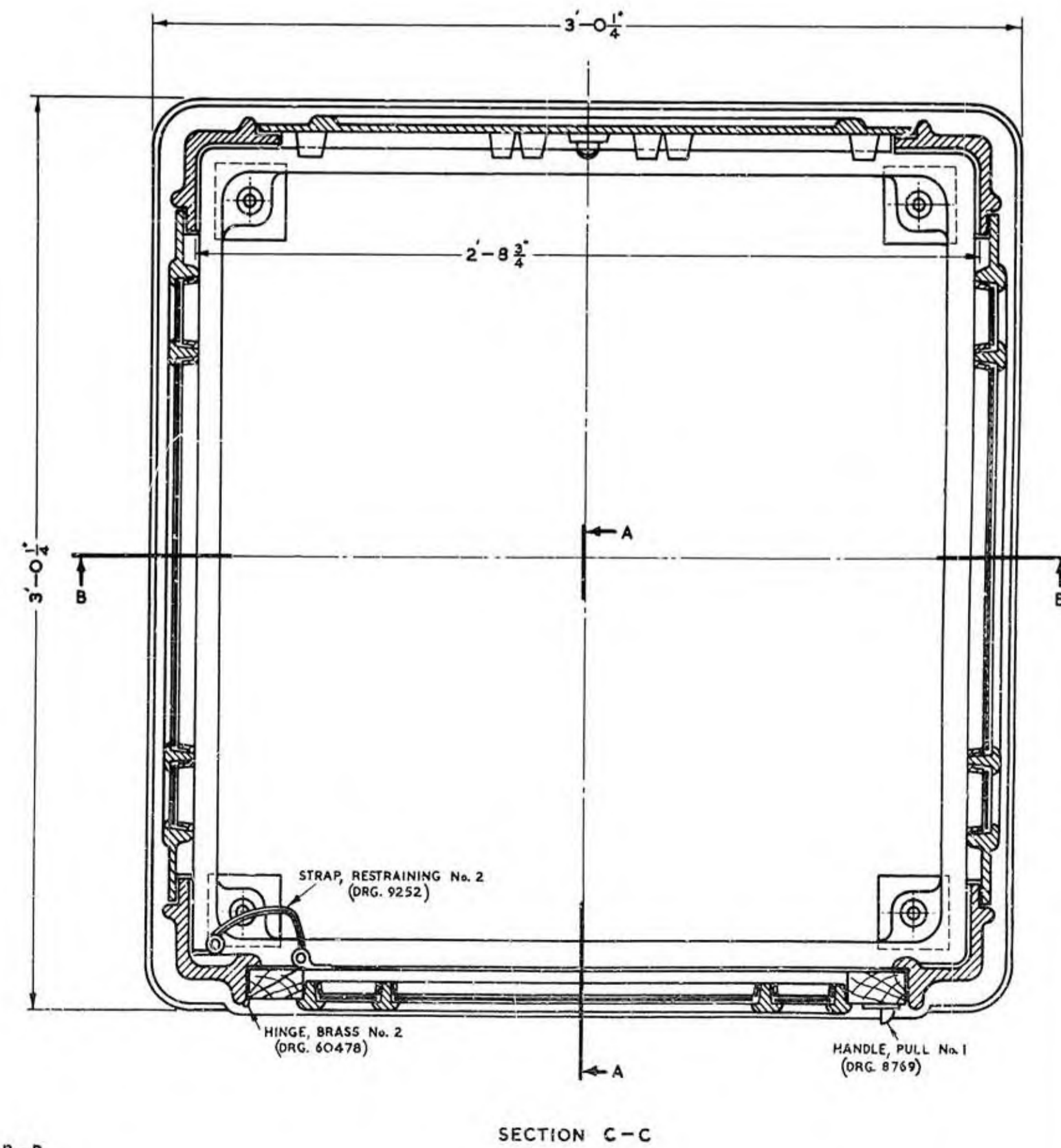
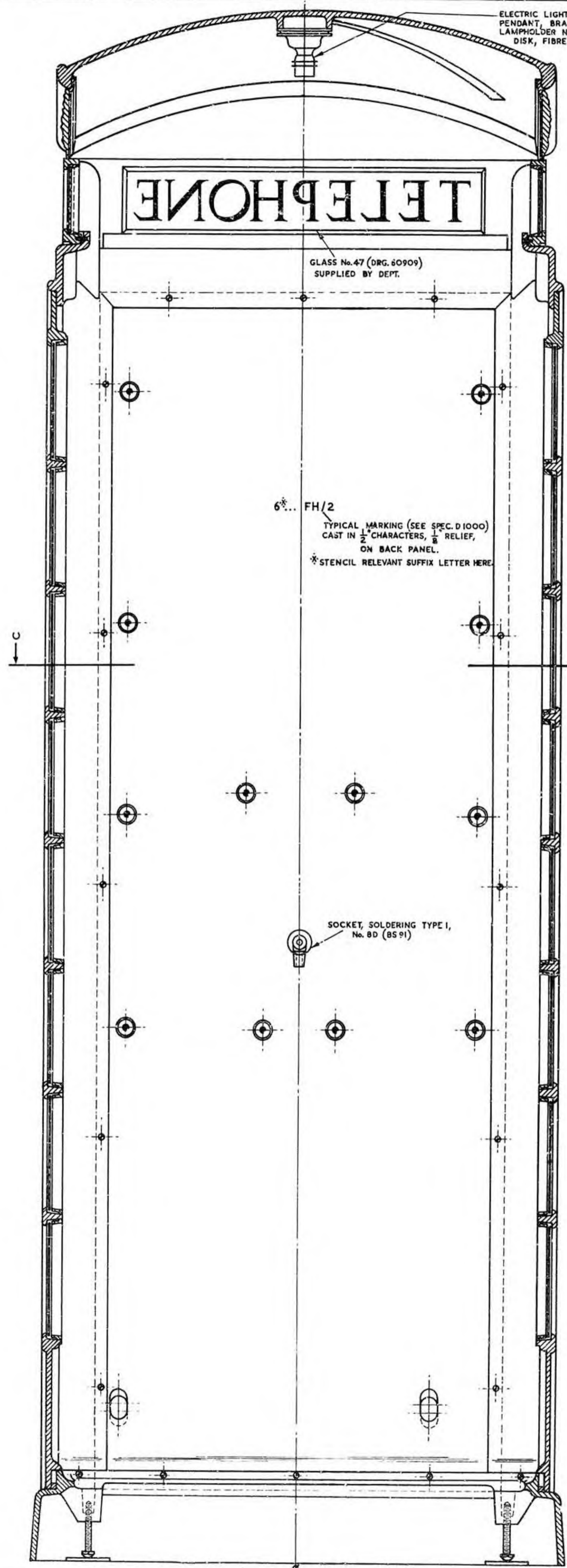
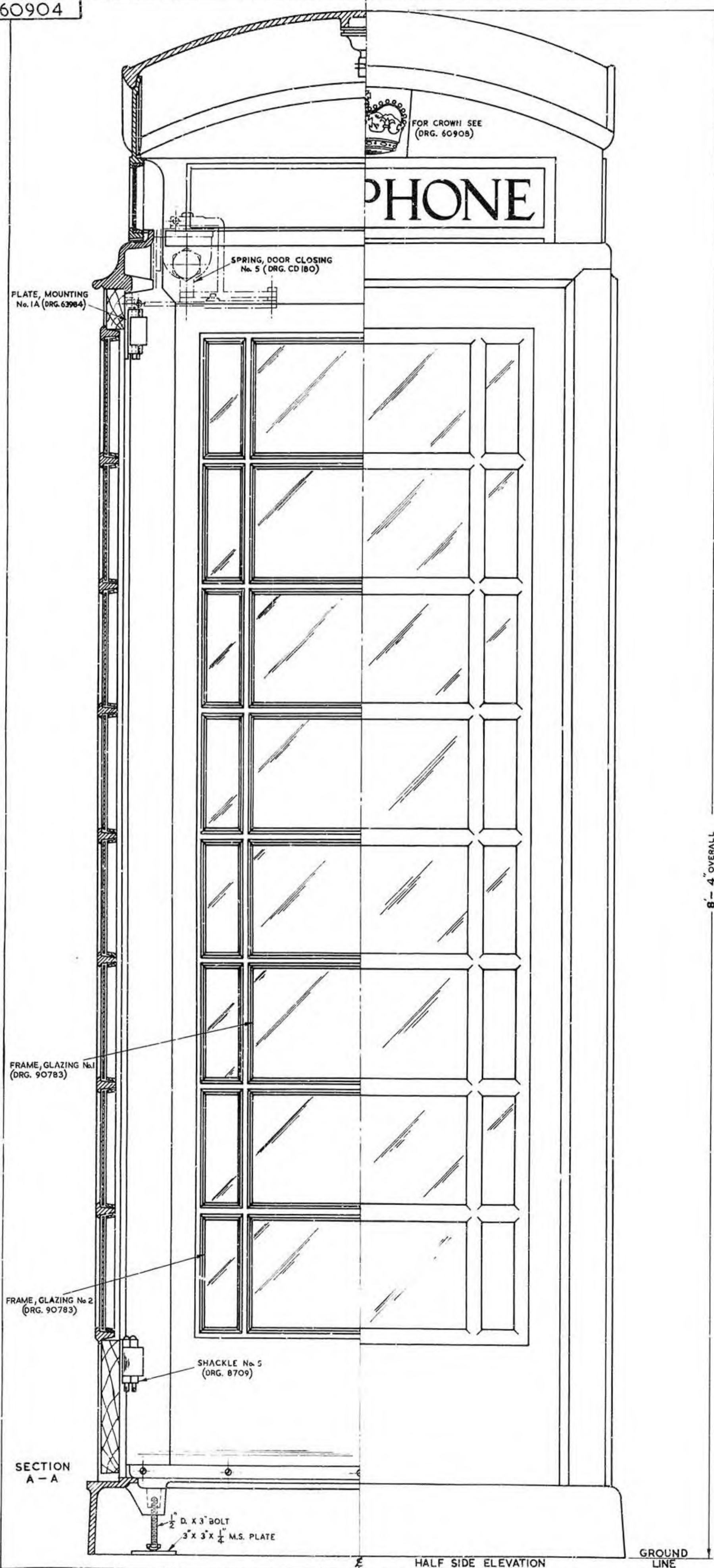


DRG. 60904



POST OFFICE ENGINEERING DEPT.
E-IN-C3 OFFICE 5 BRANCH

DISTRIBUTION RESTRICTED

REFERENCES

SEE SCHED.	SPEC. D1000
	SPEC. D1140
	SPEC. 8591

ASSEMBLY DRG. WIRING DRG.

FILE 8810 SPEC. D1140

SCALE: 1/4" AND AS THIRD ANGLE PROJECTION

DECIMAL DIMENSIONS NOT TOLERANCED SUBJECT TO

APP'D BY S SECTION DRH. H.C.W.
F.J.J. TCD J.F.H.
ORIGINAL SIGNED CHD W.J.J.
BY G.M. MADDOCK DATE 26-8-35

AMENDMENT SUFFIX

	G
	H

SPRING DOOR CLOSING No. 5
ELECTRIC LIGHT FITTING, SHACKLE
No. 5, STRAP RESTRAINING No. 2,
HINGE BRASS No. 2 & HANDLE PULL
No. 1 WERE SUPPLIED BY DEPT. PLATE
MOUNTING No. 1A ADDED. POSITION OF
LOWER SHACKLE ON DOOR AMENDED
SECTION C-C DESIGNATED
E.W. G.A.C. RES. 28-4-55
REDRAWN: E.L. FITTING REAMPLIFIED
SOCKET SOLDERING ADDED
REF. MADE TO FRAMES GLAZING
DRG. 60904 17.3.55

SCHEDULE OF ASSOCIATED DRGS.

8769	8709
9252	60478
CD180	60905
60906	60907
60908	60909
P/EL 152	P/EL 154
63984	DCM. EC1324

FOR SUPERSEDED

KIOSK No. 6
(MARK 2)
ASSEMBLY

DRG 60904