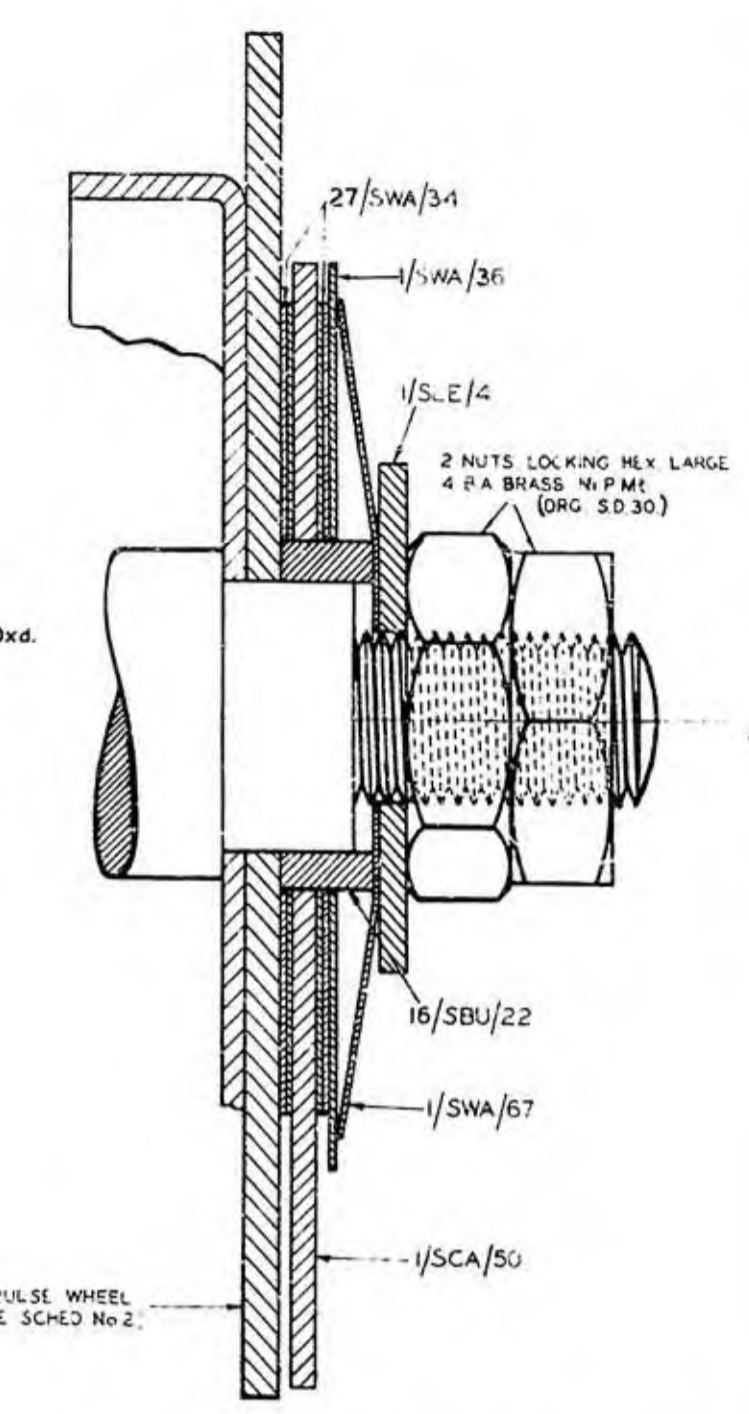
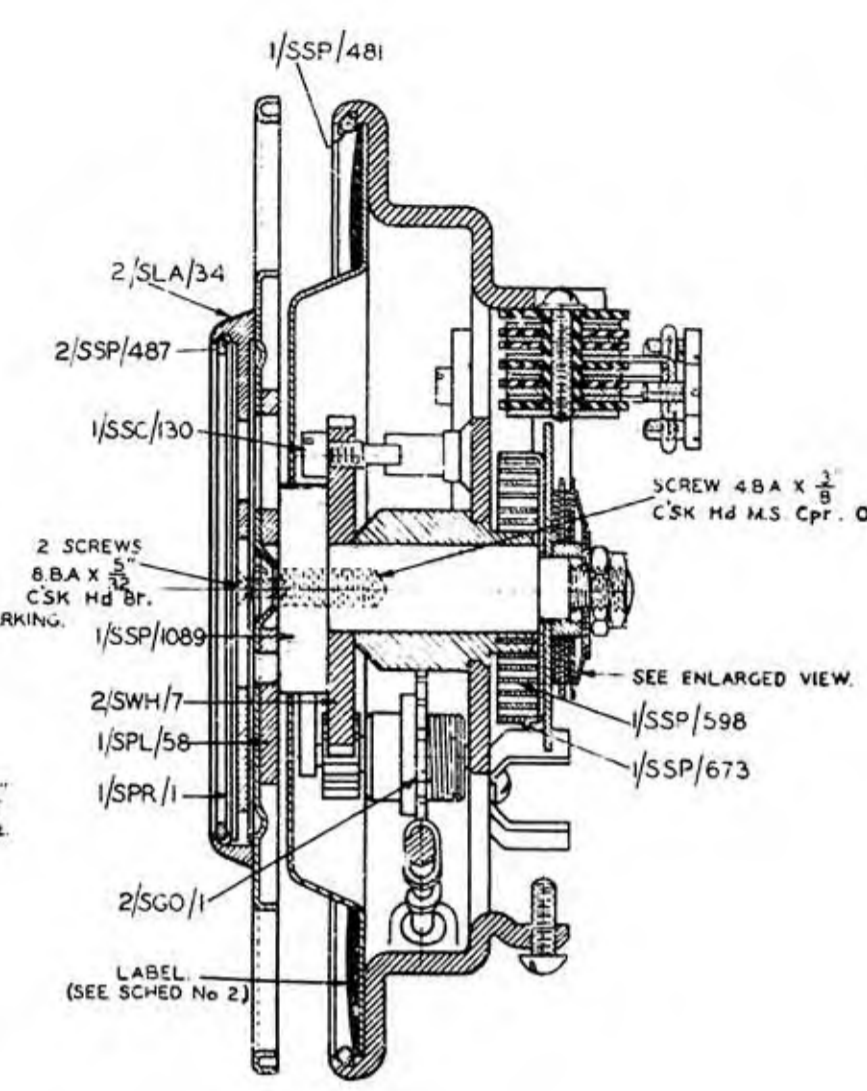
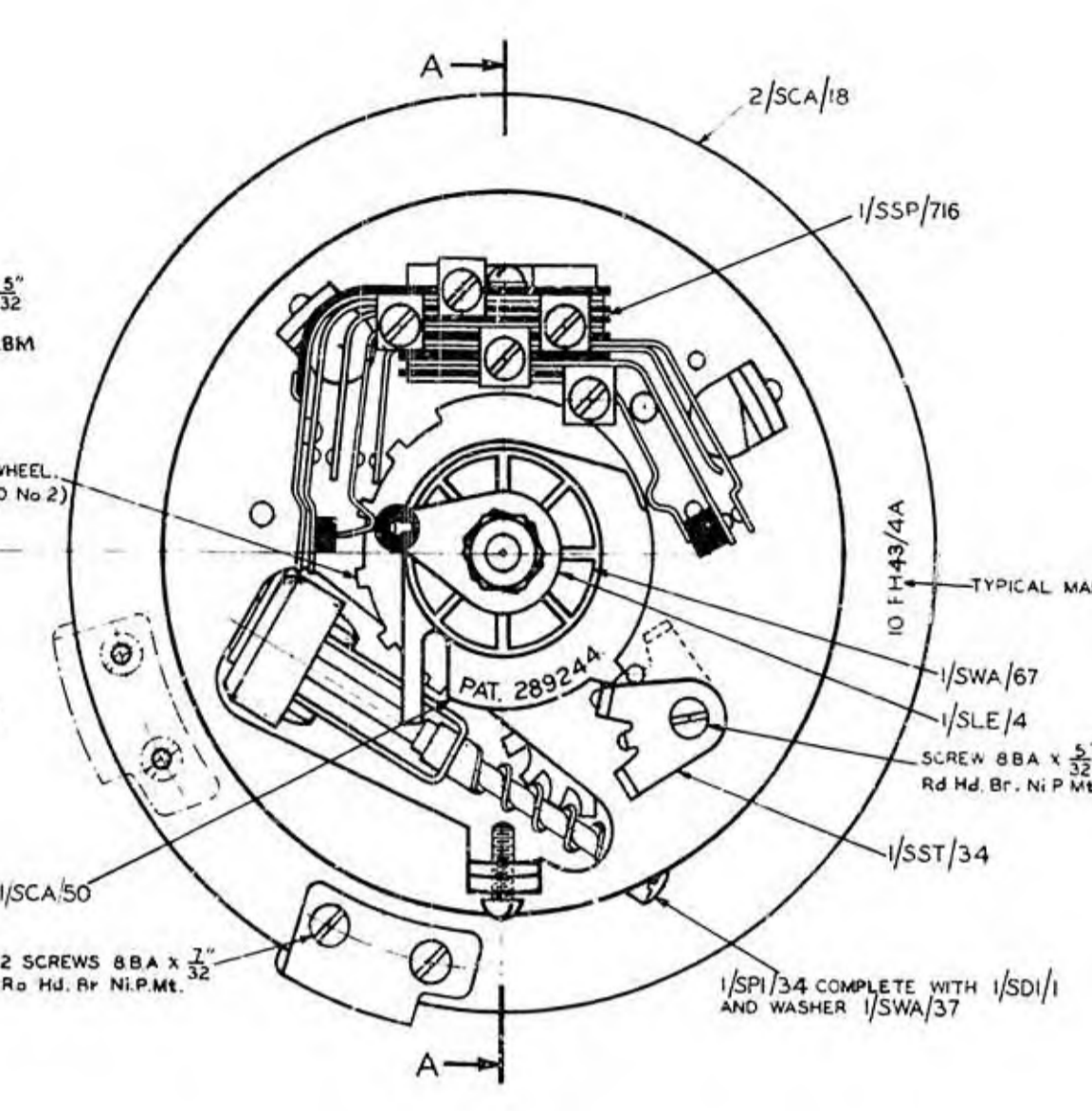
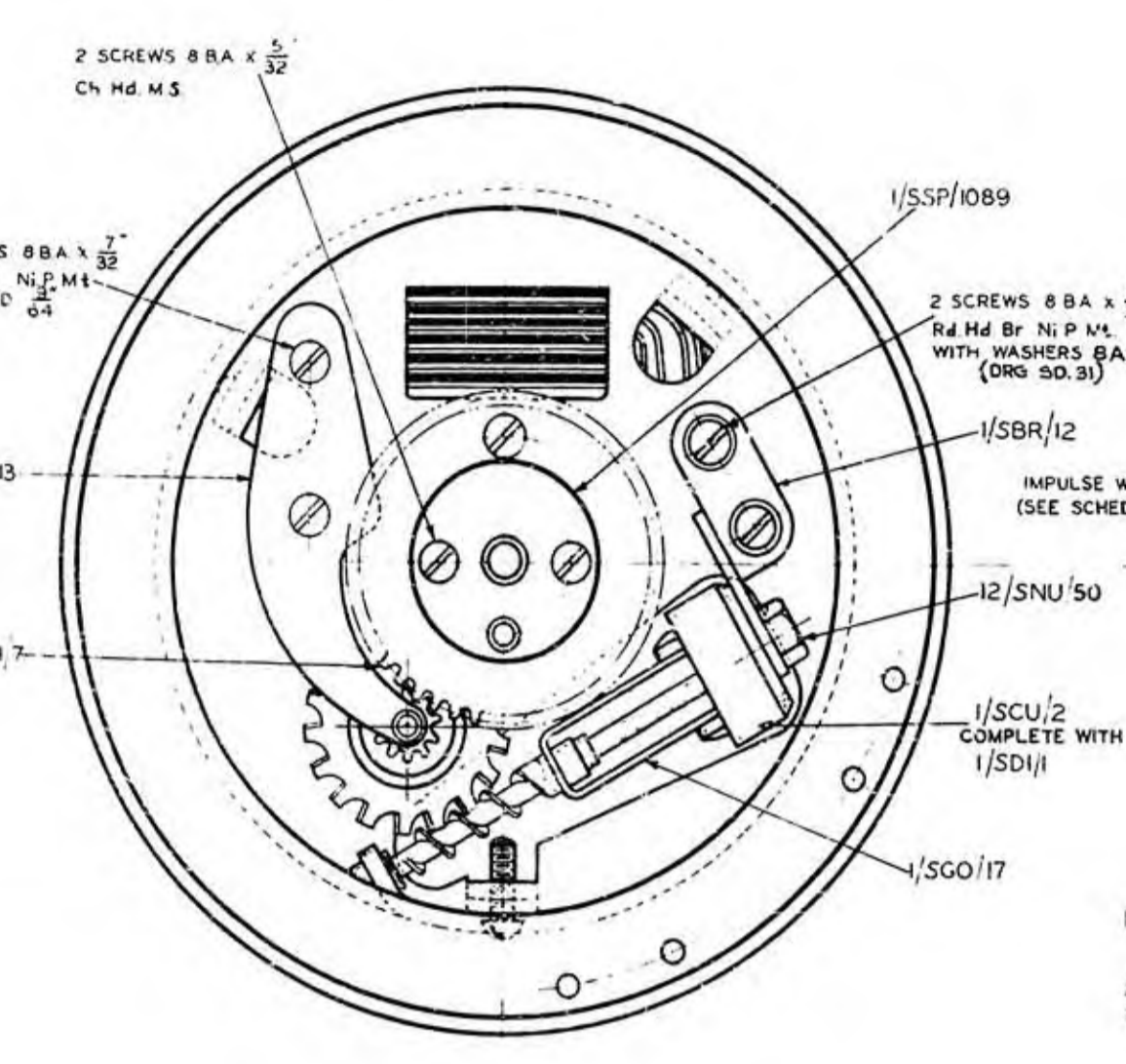


TYPICAL INSTRUCTION LABEL REQUISITIONED SEPARATELY.



POST OFFICE ENGINEERING DEPARTMENT  
E-IN-C'S OFFICE 5 BRANCH

DISTRIBUTION  
GENERAL

REFERENCES  
SPEC 01000  
587

ASSEMBLY DRG  
WIRING DRG

FILE NO. S134  
S134  
S134

SPEC 547

SCALE - 2 AND AS THIRD ANGLE PROJECTION INDICATED

USUAL DIMENSIONS NOT TOLERANCED SUBJECT TO

APP'D W B SECTION DRN A.E.M  
F.J.J. TCD A.E.M  
J.M. MADDOCK CMD H.C.

DATE 3 1 39

AMENDMENT SURFEX

PART 1/SCA/62 WAS 1/SCA/51  
A.J.S. L.W.M. A.R.A. 5.7.43  
PHOTOCOPIED - NO AMENDMENT  
15.8.55

SCHEDULE No. 1.

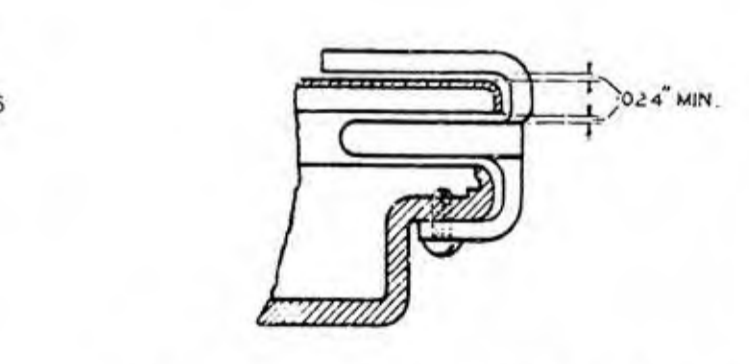
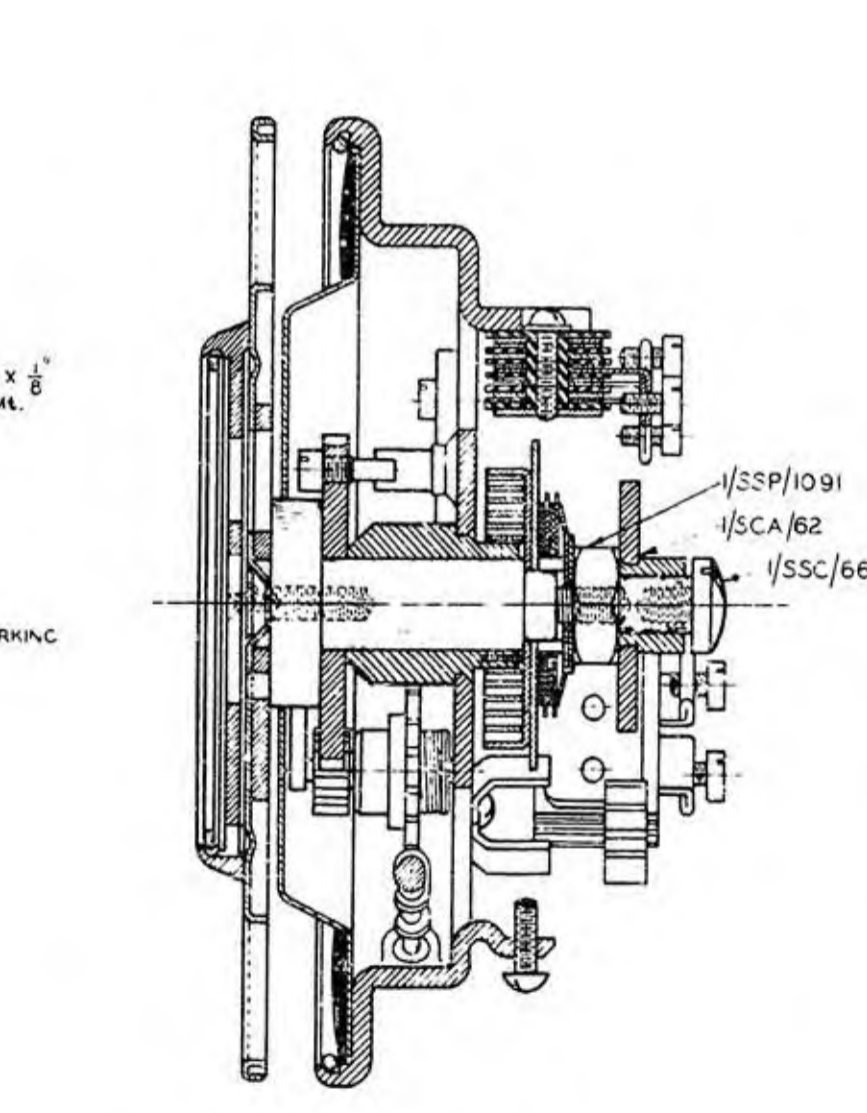
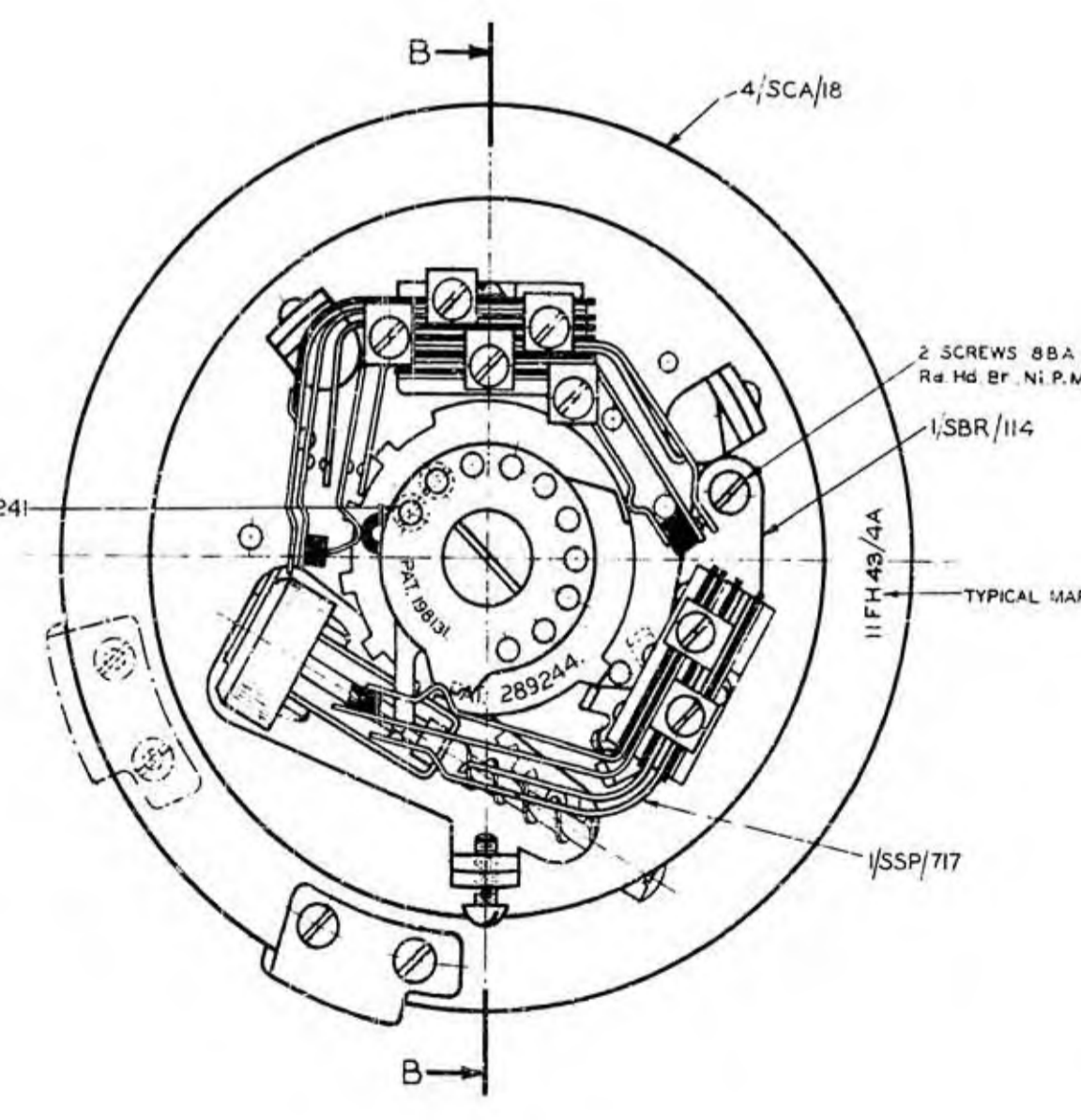
PART	QUANTITY FOR DIALS		PART	QUANTITY FOR DIALS	
	S.S. No. 10	S.S. No. 11		S.S. No. 10	S.S. No. 11
2/SPL.306	1	1	1/SGO/17	1	1
1/SPL.58	1	1	1/SLE/4	1	1
2/SCA/18	1	1	1/SSC/130	1	1
4/SCA/18	1	1	1/SP/34	1	1
1/SBR/12	1	1	1/SSP/716	1	1
2/SLA/34	1	1	1/SSP/1091	1	1
2/SST/46	1	1	1/SBR/113	1	1
1/SWH/4	SEE SCHEDULE No. 2	1	1/SCA/50	1	1
1/SWH/5	"	1	1/SWA/36	1	1
1/SSP/598	1	1	1/SSC/241	2	2
2/SGO/1	1	1	1/SSC/66	1	1
1/SWA/67	1	1	1/SBR/114	1	1
2/SWH/7	1	1	1/SSP/717	1	1
1/SSP/1089	1	1	1/SCA/62	1	1
1/SSP/34	1	1	1/SDI/1	2	2
1/SSP/673	1	1	1/SWA/37	1	1
1/SSP/481	1	1	16/SBU/22	1	1
1/SCU/2	1	1	12/SNU/50	1	1
			27/SWA/34	4	4
			1/SWH/3	SEE SCHEDULE No. 2	

SCHEDULE No. 2.

DIAL AUTO No.	IMPULSE WHEEL			LABEL		
	A	S	WI	149	150	155
10 BA	1	1	1	1	1	1
10 FA	1	1	1	1	1	1
10 FS	1	1	1	1	1	1
10 FW	1	1	1	1	1	1
10 LA	1	1	1	1	1	1
11 BA	1	1	1	1	1	1
11 FA	1	1	1	1	1	1
11 FS	1	1	1	1	1	1
11 FW	1	1	1	1	1	1
11 LA	1	1	1	1	1	1

SCREW SCHEDULE.

PART	QUANTITY FOR DIALS	
	S.S. No. 10	S.S. No. 11
SCREW 8 BA x 5/32 Ch. Hd. M.S.	2	2
SCREW 8 BA x 7/32 Ch. Hd. Br. Ni.P.Mt. THREADED 2.	2	2
SCREW 8 BA x 5/32 Rd. Hd. Br. Ni.P.Mt.	3	3
SCREW 8 BA x 5/32 C.S.K. Hd. Br.	2	2
SCREW 4 BA x 3/8 C.S.K. Hd. M.S. Cpr. Oxd.	1	1
SCREW 8 BA x 7/32 Rd. Hd. Br. Ni.P.Mt.	2	2
SCREW 6 BA x 1/2 Rd. Hd. Br. Ni.P.Mt.	2	2
WASHER No. 9 ABM (DRG. S.D.31)	2	2
NUTS LOCKING HEX. LARGE 4 BA BRASS Ni.P.Mt. (DRG. S.D.30)	2	2



NOTE - WHEN THE DIAL IS TO BE USED WITH "MINIMUM PAUSE" SUPPRESSED PART, 2/SST/46 (STOP, FINGER) AND PART, 1/SSP/34 (STOP, SLIPPING CAM) ARE TO BE FIXED IN POSITION SHOWN DOTTED

FOR GAUGE SEE DRG. 62591

For SUPERSED

DIALS, AUTOMATIC  
S.S.No.10 & S.S.No.11

(MARK 4A)