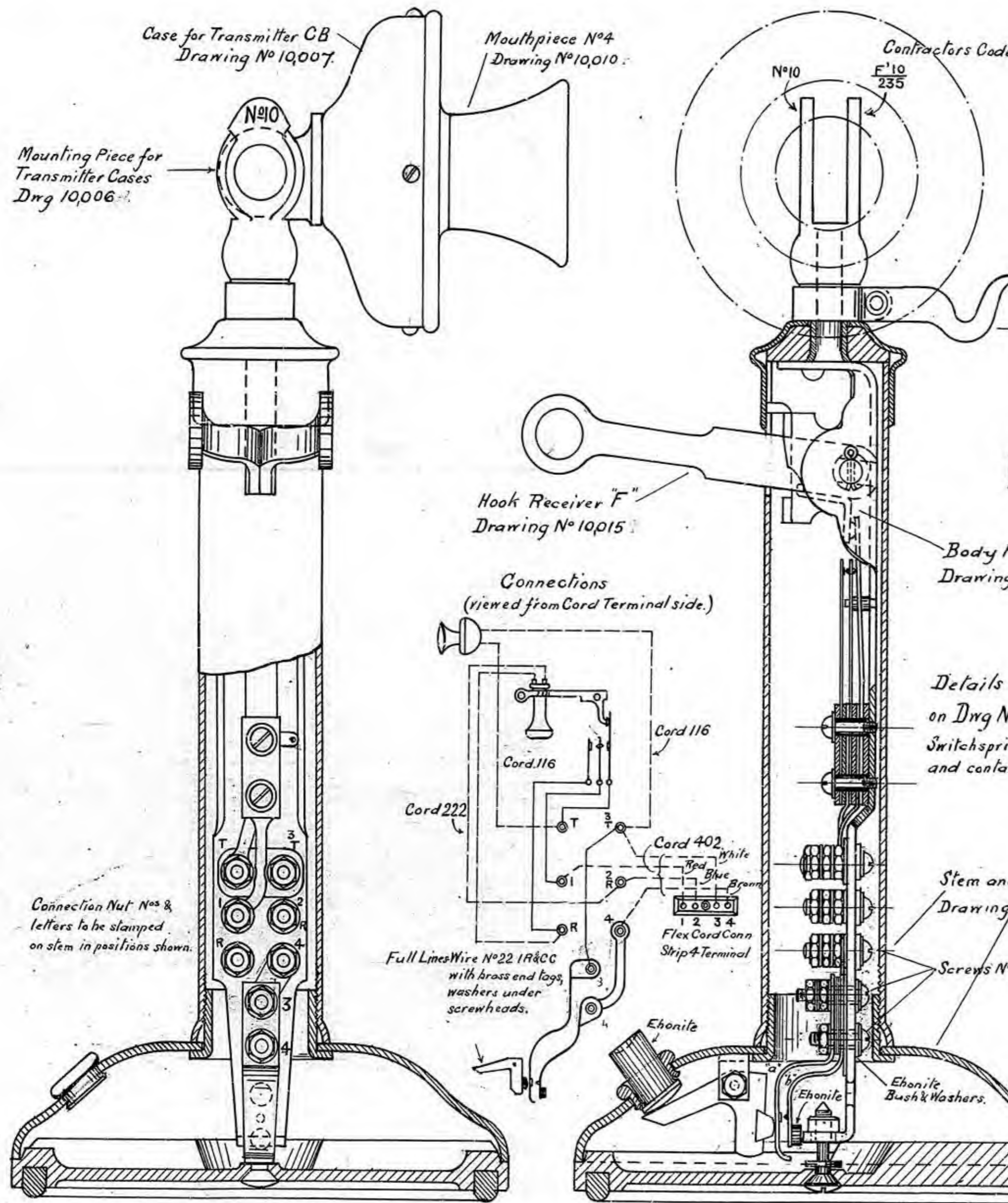


ENGINEER-IN-CHIEF, C.P.O.	
DRAWING N ^o 7026	
Drawn by } Traced by } H. Checked by }	Date Completed October 1911
EXAMINED BY	IN SECTION
PHOTO PRINT NOT TO BE SCALED	



Hook Receiver "D" Dwg 10015.
(not to be supplied unless specified on order)

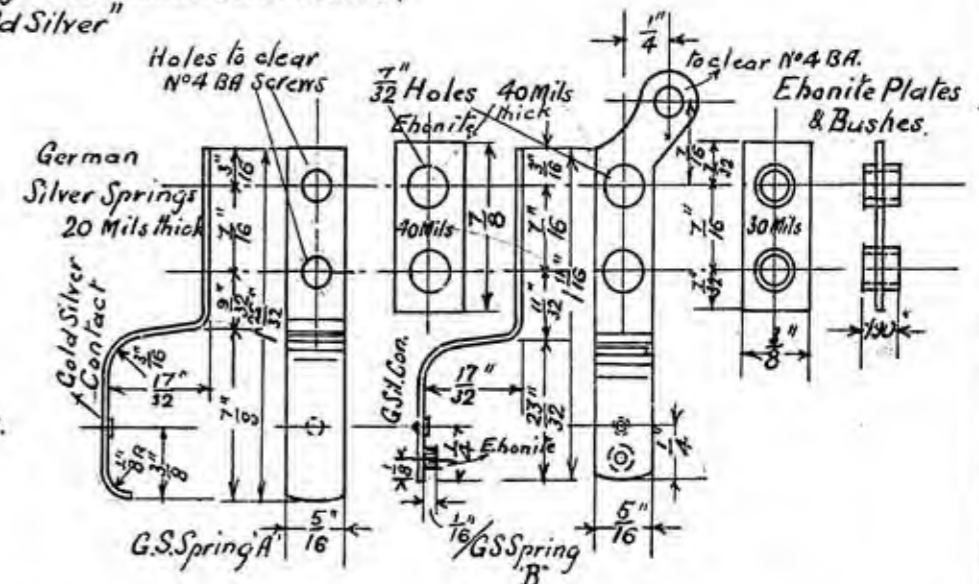
DO NOT SCALE
(A MICROFILM PROCESS PRINT)

TELEPHONE N°10 (MARK 235)

INT. C.B. TABLE TELE, Full Size

Eng. in Chief Spec. N° D 194.

Details of Switchsprings are shown on Dwg N° 10,016.
Switchsprings to be made of Hard Rolled German Silver, and contacts to be of "Gold Silver"



Handwritten signature and date:
Y. J. ...
22-12-11