

KIOSK NO. 4. COMBINED TELEPHONE, LETTER BOX & STAMP VENDING MACHINE.

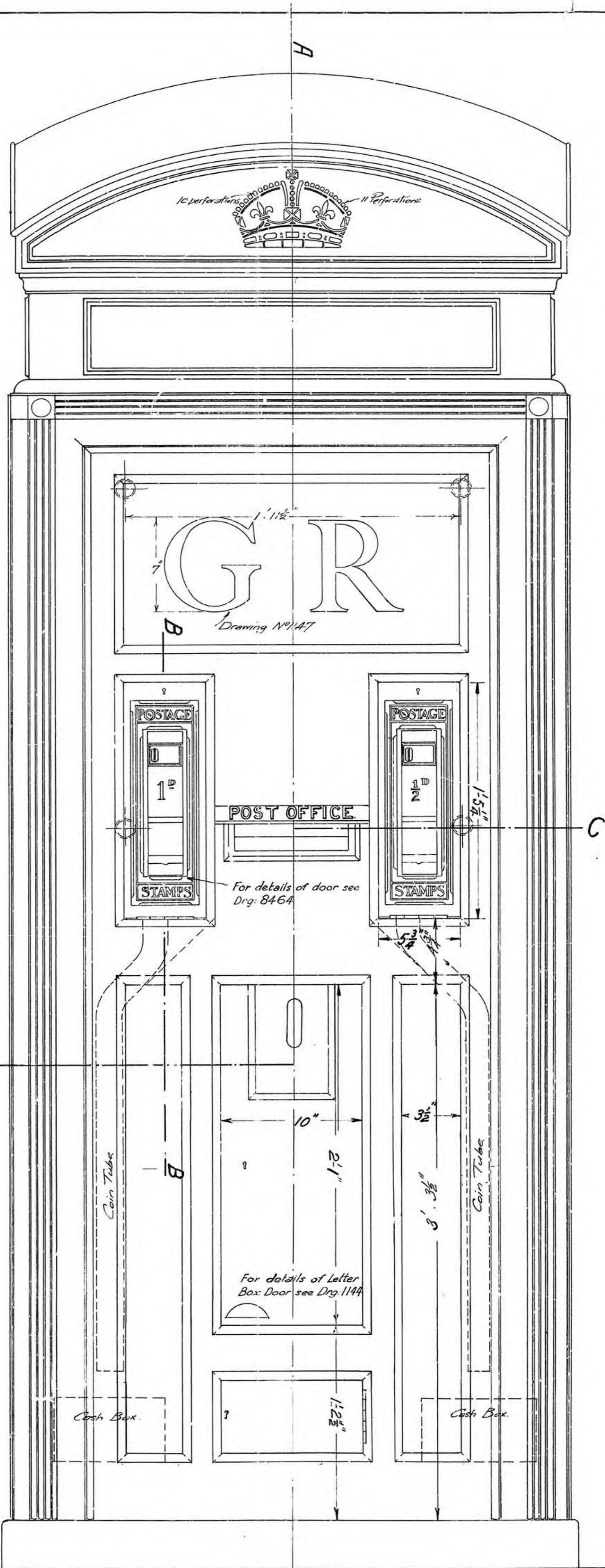
GENERAL ARRANGEMENT OF BACK.

Scale - 3" = 1 Foot.

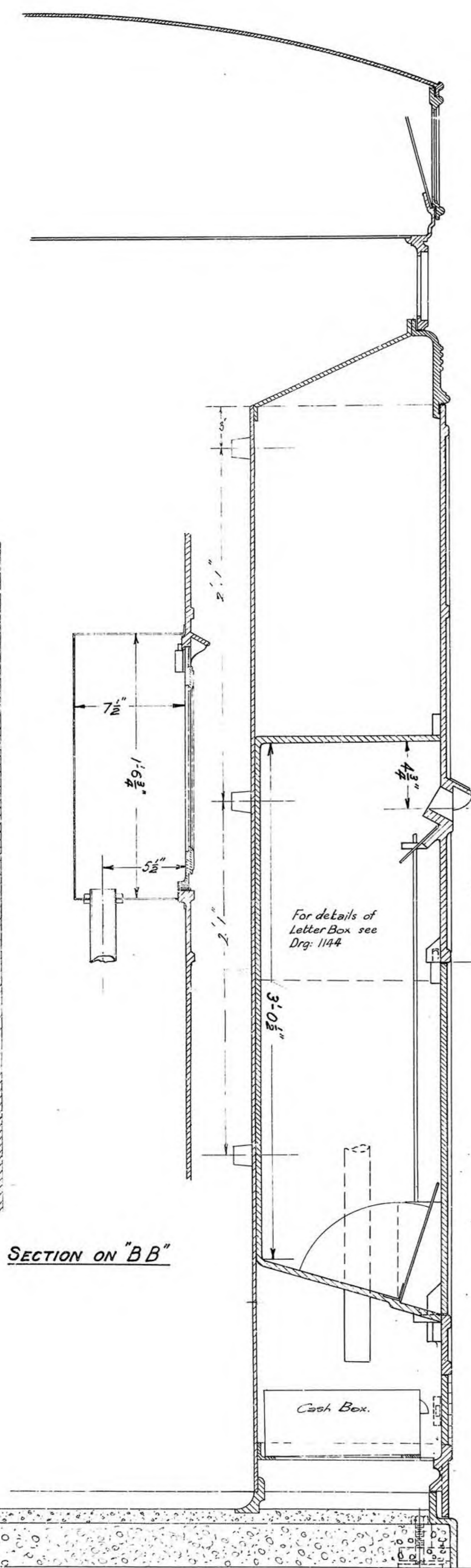
For General Assembly see Drawing N° 88848

Supersedes Drawing Misc N° 2093

NO SEPARATE SPECIFICATION

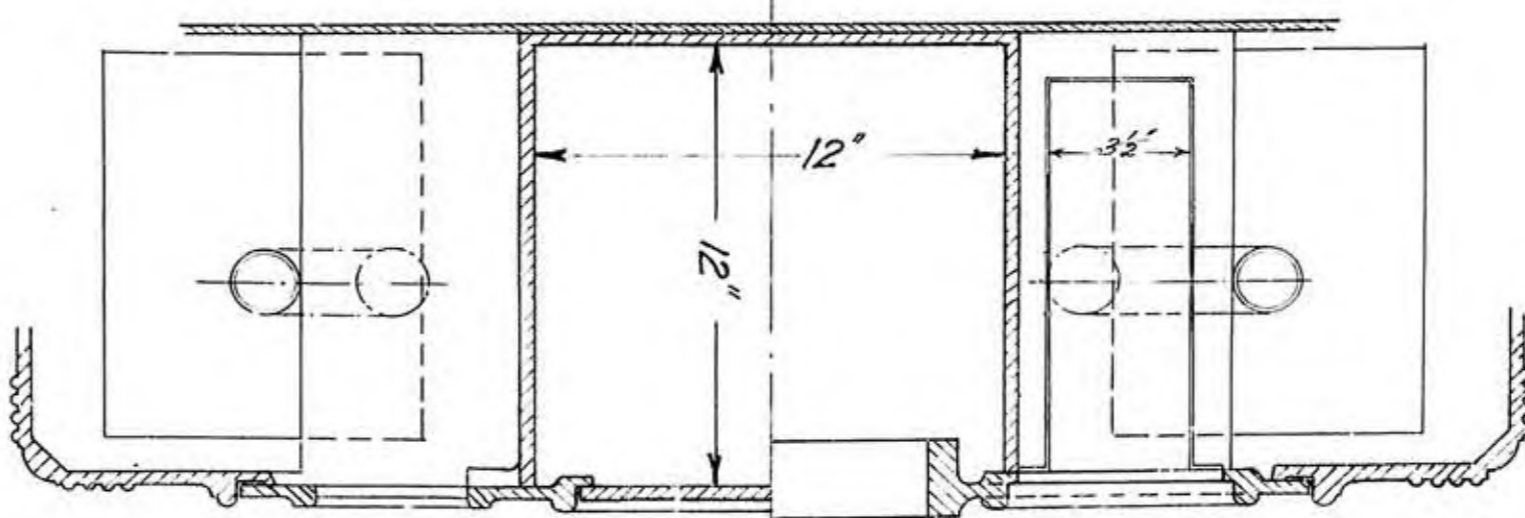


ELEVATION



SECTION ON "BB"

SECTION ON "AA"



SECTIONAL PLAN ON "CC"

Drawings	Checked	DATE	FILED	DATE
7/27	Checked	7/27	7/27	7/27
6/26	Checked	6/26	6/26	6/26
6/26	Checked	6/26	6/26	6/26

DRAWING N° 88849 A

Office of ENGINEER-IN-CHIEF, G.P.O.

Drawn by: M.C.C. Date: July 1927

Checked by: M.C.C. Date: July 1927

Examined by: J.W.D. IN-CHIEF'S SECTION

PHOTO PRINT NOT TO BE SCALED.

pinkley
8-7-27