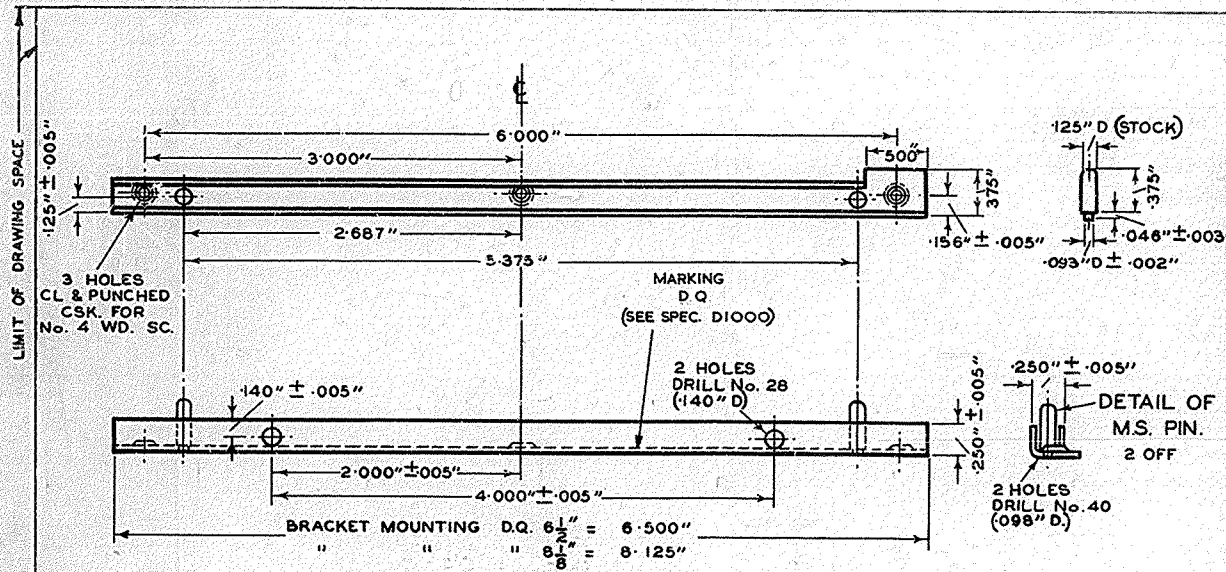


TRIM TO THESE LINES 13" x 8"

S/D.O.

E-IN-C 438
GEN. GEN. D0032

DRG. 90071



MATERIAL :- BRASS 20 S.W.G. (.036")
FINISH :- CLEAN. REMOVE ALL BURRS.

| | |
|---|--|
| POST OFFICE ENGINEERING DEPT. E-IN-C'S OFFICE S BRANCH | |
| DISTRIBUTION RESTRICTED | |
| REFERENCES | |
| | SPEC. D 1000 |
| ASSEMBLY DRG. | WIRING DGM |
| FILE | SPEC. |
| SCALE :- 1" AND AS INDICATED | THIRD ANGLE PROJECTION |
| DECIMAL DIMENSIONS NOT TOLERANCED SUBJECT TO ± .010" | |
| APP'D. IN SI/3 SECTION | DRN. } TCD. } D.J.S. CKD. } DATE 3.2.51 |
| AMENDMENT | |
| FORMERLY SHOWN ON DRG. 60577 SHEET 3-3 DETAILS 9-10. | SUFFIX |
| MARKING ADDED | A |
| FOR SUPERSED | |
| BRACKET MOUNTING | |
| D. Q. | |
| 6 1/2" · 8 1/8" | |
| DRG. 90071 | |

MASTER