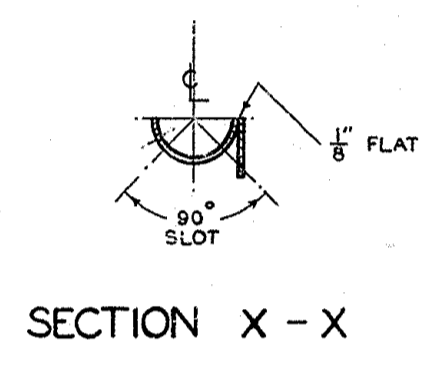
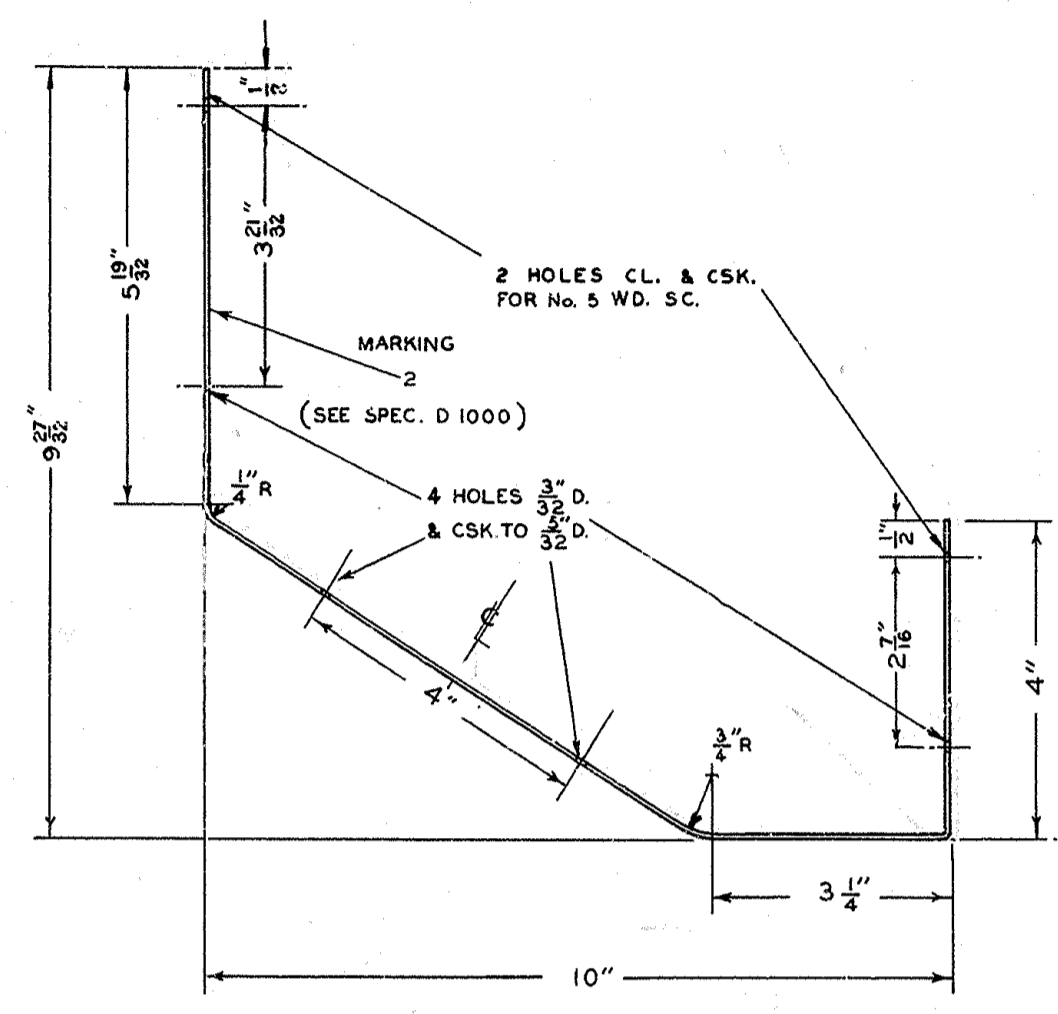
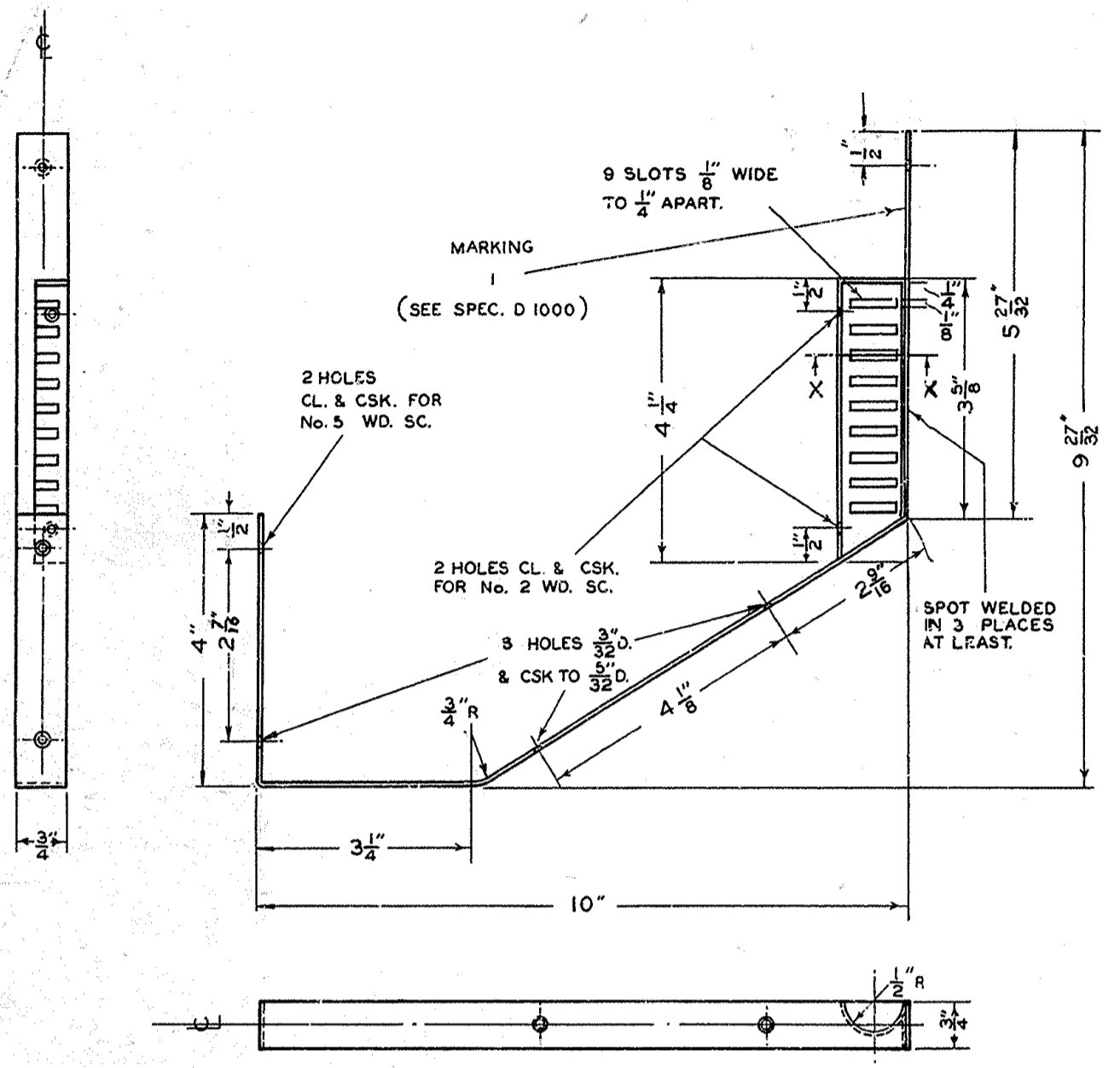


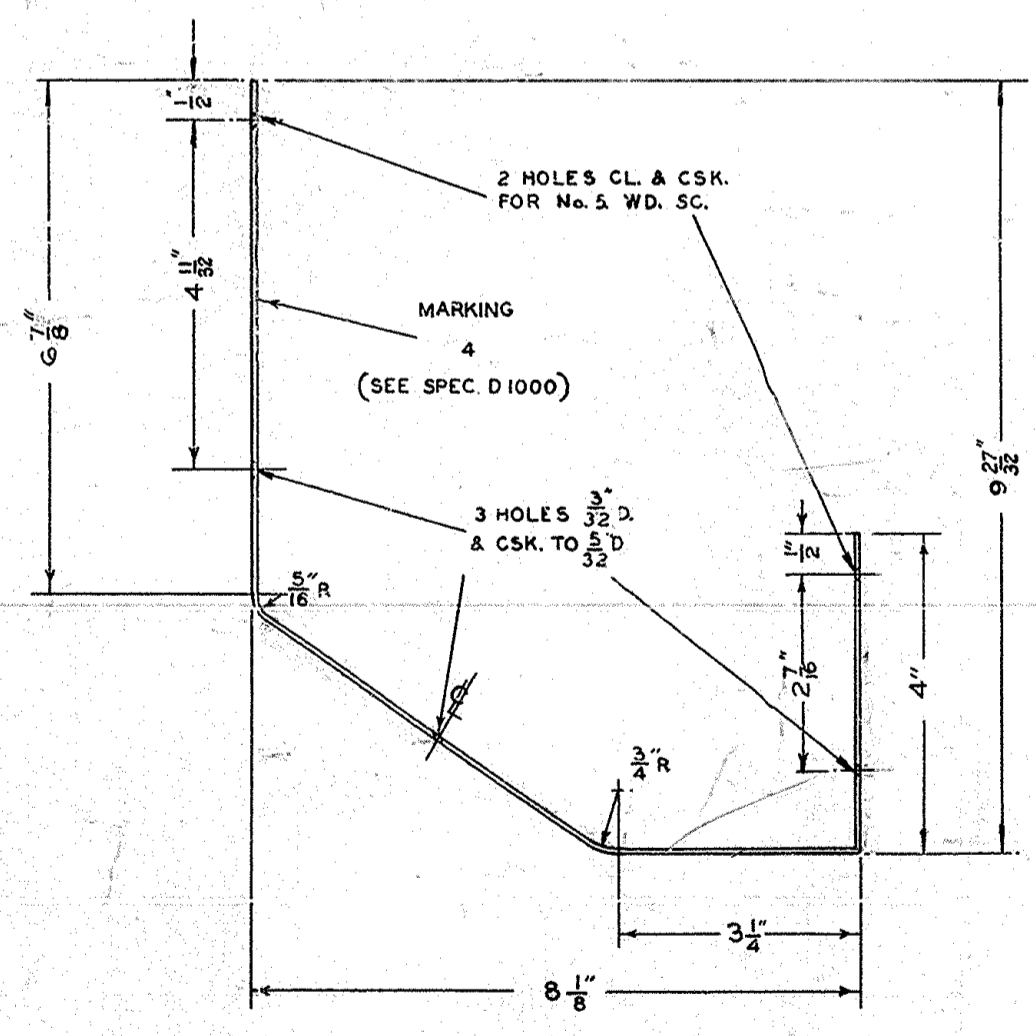
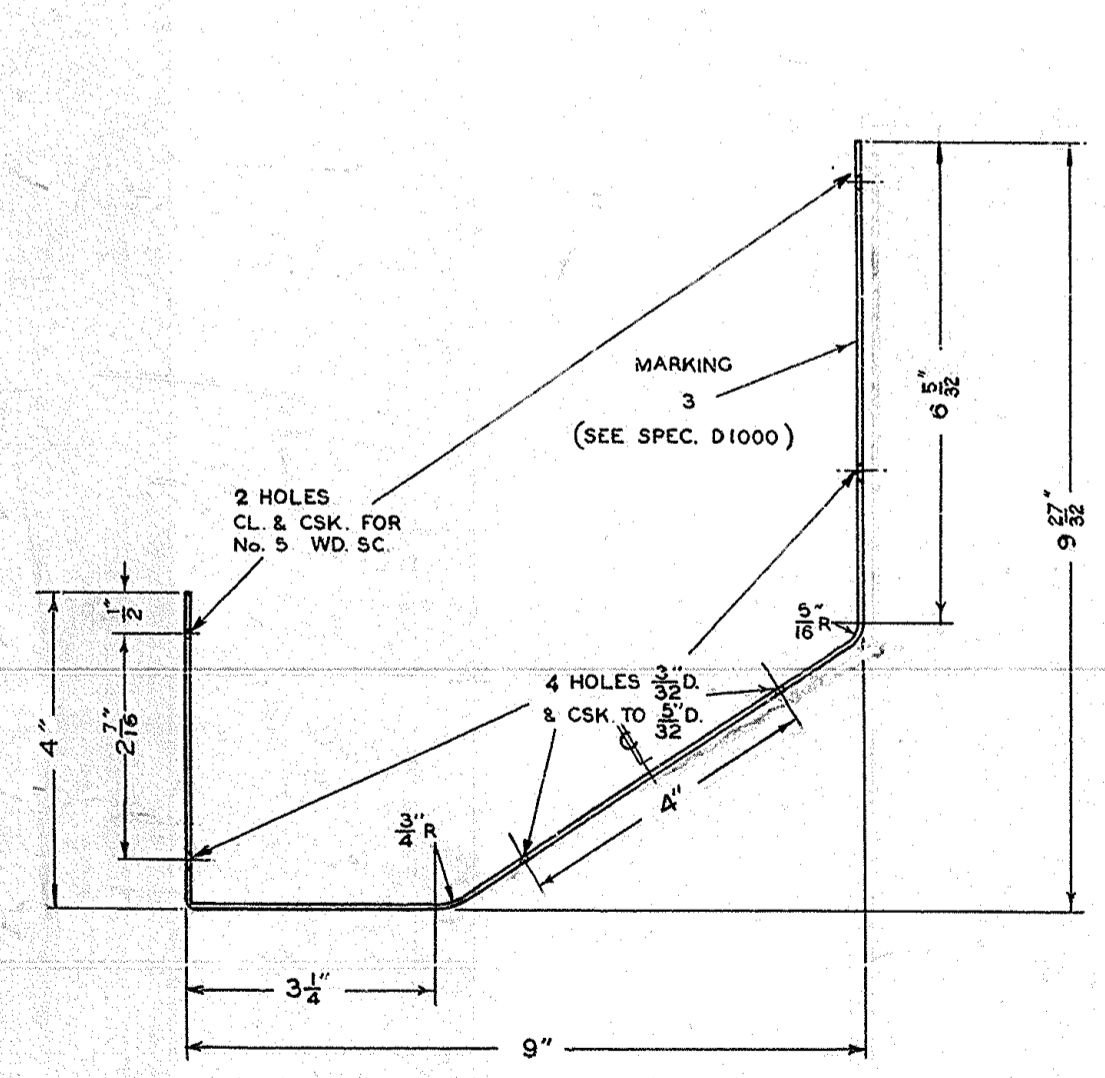
TRIM TO THESE LINES 26"x29"  
DRG. 90072

POST OFFICE ENGINEERING DEPT E-IN-C'S OFFICE 3 BRANCH	
DISTRIBUTION RESTRICTED	
REFERENCES	
SPEC. D1000	
M. DIA 75	
ASSEMBLY DRG. 60577 SHEET 1-3	WIRING DGM.
FILE SB11/3	SPEC. D 1475
SCALE: 1 AND AS THIRD ANGLE PROJECTION	
FRACTIONAL DIMS. NOT TOLERANCED SUBJECT TO ± 1/64"	
APP'D IN S1/3 SECTION <i>C. Andrews</i> RMA	DRN. <i>8/16</i> TCD. <i>8/16</i> CKD. <i>8/16</i> DATE 3.2.51
AMENDMENT	SUFFIX
FORMERLY SHOWN ON DRG 60577 SHEET 3-3	
STRIP No. 1. DIM. 3 3/8" WAS 10"	A
STRIP No. 2. DIM. 9 3/8" WAS 10"	
STRIP No. 3. DIM. 3 3/8" WAS 10"	
STRIP No. 4. DIM. 9 3/8" WAS 10"	
STRIP No. 1. DIM. 3 3/8" WAS 10"	B
STRIP No. 4. DIM. 9 3/8" WAS 10"	



STRIP No. 1. MATERIAL :- STAINLESS STEEL 18 S.W.G. (048") SEE SPEC.  
FINISH :- POLISHED.  
ALL EDGES TO BE ROUNDED

STRIP No. 2. MATERIAL :- } AS ITEM 1.  
FINISH :- }



STRIP No. 3. MATERIAL :- } AS ITEM 1.  
FINISH :- }

STRIP No. 4. MATERIAL :- } AS ITEM 1.  
FINISH :- }

DO NOT SCALE  
(A MICROFILM PROCESS PRINT)

FOR SUPERSED

STRIPS  
Nos. 1 to 4

DRG 90072

MASTER