

E- IN-C 438  
GEN. GEN. D0032

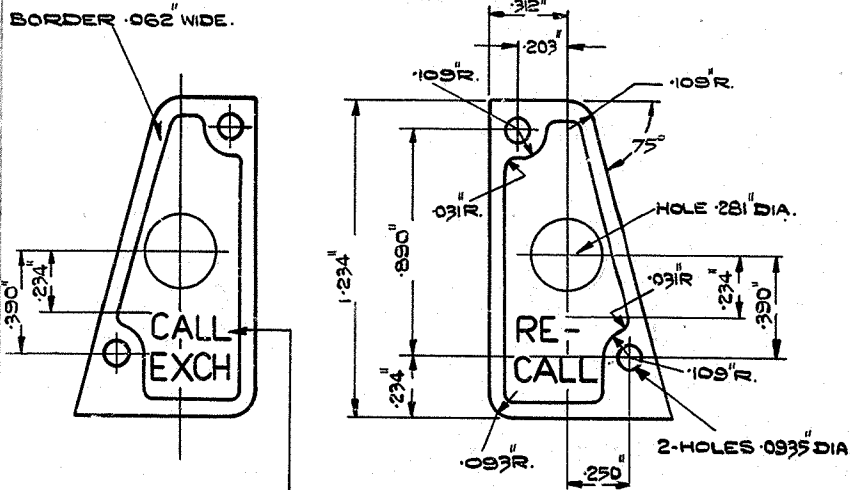
/D.O.

MOBILE

PRINT TO THESE LINES 13" X 8"

DRG 90715

POST OFFICE ENGINEERING DEPT E-IN-C'S OFFICE S BRANCH	
DISTRIBUTION GENERAL	
P.O. REFERENCES	
SPEC. B 1070 B 851470	
ASSEMBLY	DRG. Dgm.
FILE NO	BT.D.C.
SCALE	AND AS 3RD ANGLE
DECIMAL DIMENSIONS NOT TOLERANCED	
SUBJECT TO	
APP'D IN SI SECTION	DRN G.E.C. T.C.D. G.E.C. CRD. CONTR. JR.
	DATE 20.2.56
AMENDMENT SUFFIX BORDER AROUND .28" DIA HOLE DELETED - BOTH LABELS. SEE 20.2.55 H.M.B. 13.12.55	
FOR SUPERSED	
LABELS, N <sup>o</sup> 332 J & N <sup>o</sup> 332 K	
DRG. 90715	



HEIGHT OF CHARACTERS 0.100"  
THICKNESS OF CHARACTERS 0.015"  
AVERAGE NUMBER OF  
CHARACTERS PER INCH 12.

LABEL N<sup>o</sup> 332 J                      LABEL N<sup>o</sup> 332 K

MATERIAL :- ALUMINIUM, SPEC. B.S. 1470. 21 S.W.G. (.032")  
FINISH :- DOUBLE ANODIZED NATURAL CHARACTERS AND BORDER  
ON BLACK BACKGROUND.  
FIRST USE :- BELL SET N<sup>o</sup> 44 (DRG. 90569)

(c)  
PIO2728  
PIO2729

LIMIT OF DRAWING SPACE