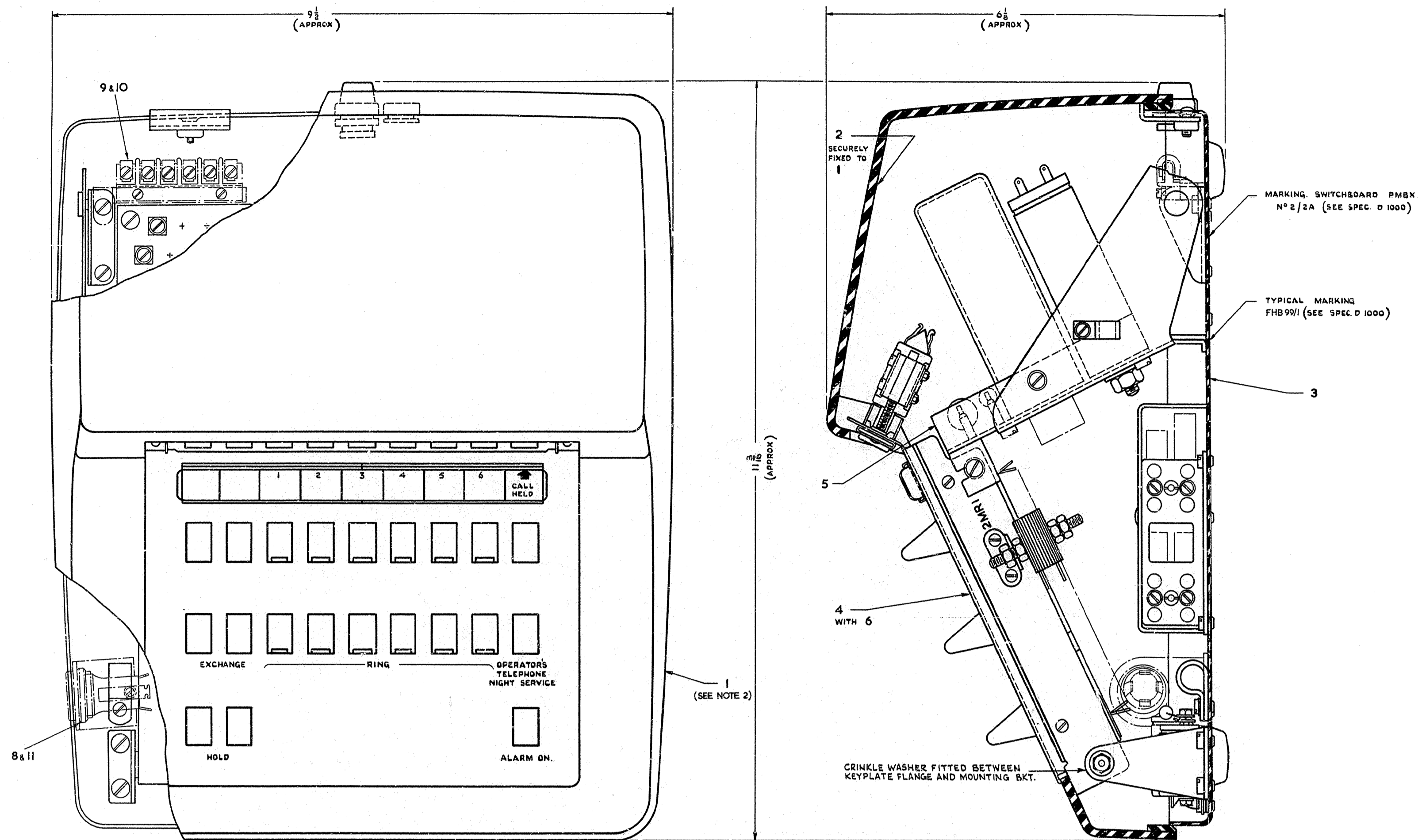
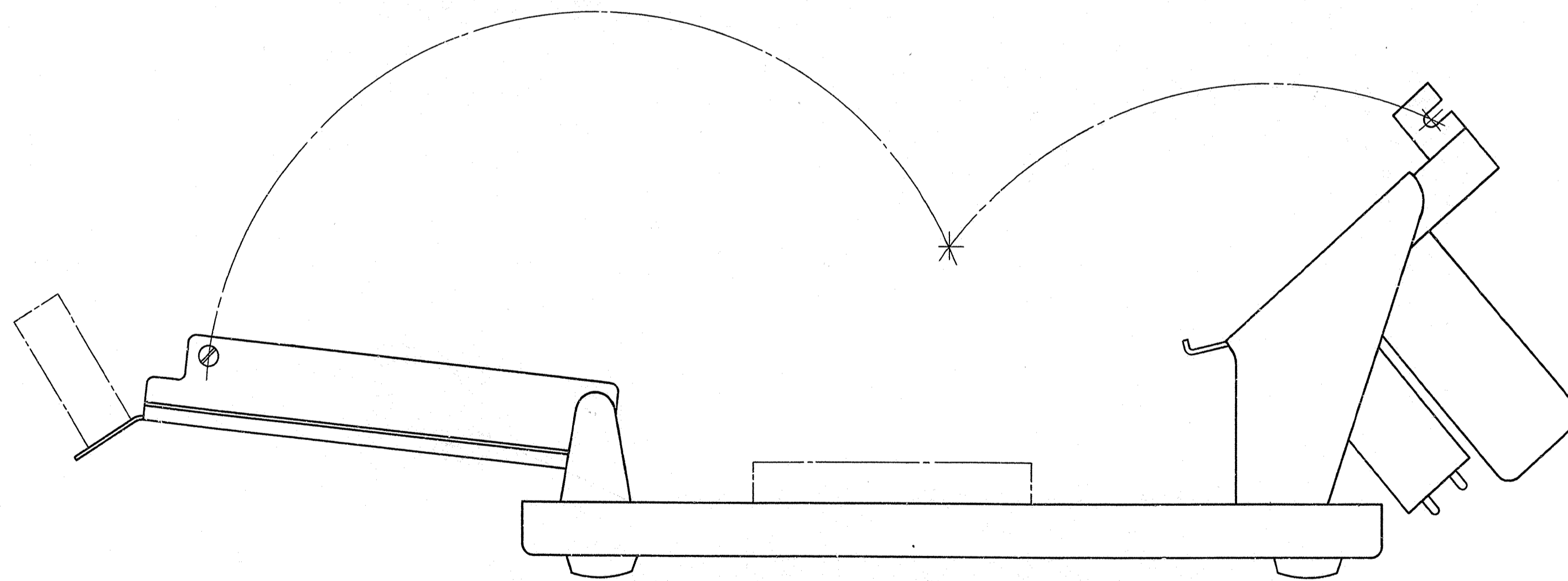


DRG 91508/O



VIEW WITH COVER & BASE IN SECTION



VIEW WITH COVER REMOVED SHOWING HINGED KEY & RELAY PLATES IN OPEN POSITION

ITEM	QTY	DESCRIPTION	DRG	SPEC.	N° OFF	SCREWS, ETC.	MATERIAL	FINISH	N° OFF
1	1	COVER, SWITCHBOARD N° 1, GREY	91516		1				
2	1	LABEL DIAGRAM	25ML703 SHEET 2		1				
3	1	BASEPLATE SUB-ASSY & COMPONENT SCHEDULE	91517		1				
4	1	KEYPLATE SUB-ASSEMBLY & COMPONENT SCHEDULE	91519		1	SC. 4 BA x 5/16 CH. HD.	M.S.	ZN PLAC OR PASS	2
5	1	RELAY PLATE SUB-ASSEMBLY & COMPONENT SCHEDULE	91520		1	SC. 4 BA x 5/16 CH. HD.	M.S.	ZN PLAC OR PASS	4
6	1	PART 1/DP1/225 (PIVOT)	DP1/225		1	NUT SELF-LOCKING, SIMMONDS NYLOC TYPE PT/8046 (OR EQUIV.) WASHER, THOMAS HADDON & STOKES LTD, BIRMINGHAM, TYPE BERYLLIUM COPPER 'CRINKLE' WASHER 2 BA. (OR EQUIV.) WASHER 4 BA. LARGE	M.S.	ZN PLAC OR PASS	2
7	1	COVER, SWITCHBOARD N° 1A, GREY (SEE NOTE 2)	91527		1				
8	1	JACK N° 84C	9C841		1				
9	1	PART 2/DS1/835 (STRIP, CONNECTION)	DS1/835		1				
10	1	PART 1/DBR/433 (BRACKET, MOUNTING)	DBR/433		1	SC. 4 BA. x 1/4 CH. HD.	M.S.	ZN PLAC OR PASS	1
11	1	PART 1/DBI/434 (BRACKET, JACK)	DBI/434		1	SC. 6 BA. x 5/16 CH. HD.	M.S.	ZN PLAC OR PASS	1

NOTE:—1. DIMENSIONS ARE FOR REFERENCE PURPOSES ONLY.  
2. ITEM 7 WHEN REQD SEPARATELY REPLACES ITEM 1 WHICH SHOULD BE RETURNED TO STORES.

COLOUR:— GREY  
Ø REPLACEABLE ITEM  
\* ITEMS TO BE ACQUISITIONED SEPARATELY & FITTED LOCALLY WHEN REQD.

DIMENSIONS IN INCHES

POST OFFICE ENGINEERING DEPT 5 BRANCH	
DISTRIBUTION GENERAL	
PO	
REFERENCES	
	SPEC D 1000
	- S629
ASSEMBLY DRG	WIRING DGM LD 163/0
FILE S239	B.T.D.C. SPEC S629
SCALE — 1 AND AS INDICATED	THIRD ANGLE PROJECTION
DECIMAL DIMENSIONS NOT TOLERANCED SUBJECT TO	
App'd IN 53 SECTION	DRN } E.T.LTD TCD } CKD CONTRS } DATE 7.7.61
AMENDMENT SUFFIX	
10 AND SUPERSESSION NOTE ADDED	A
ITEMS 7, 8, 9, 10 & 11 AND NOTE 2 ADDED	B

SUPERSEDED FOR NEW WORK BY  
DRG. 91508/1

SWITCHBOARD  
P.M.B.X. N° 2/2A  
(MARK 1)  
ASSEMBLY

DRG. 91508/O

(E)  
N114 A1