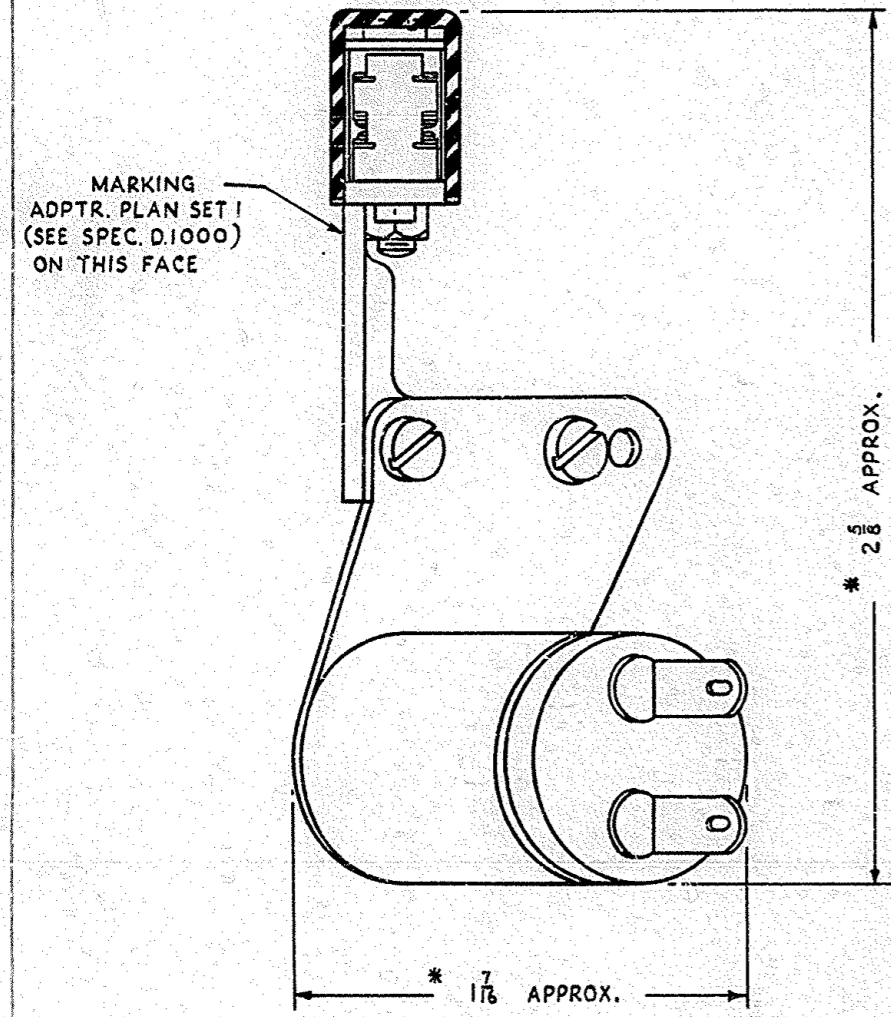
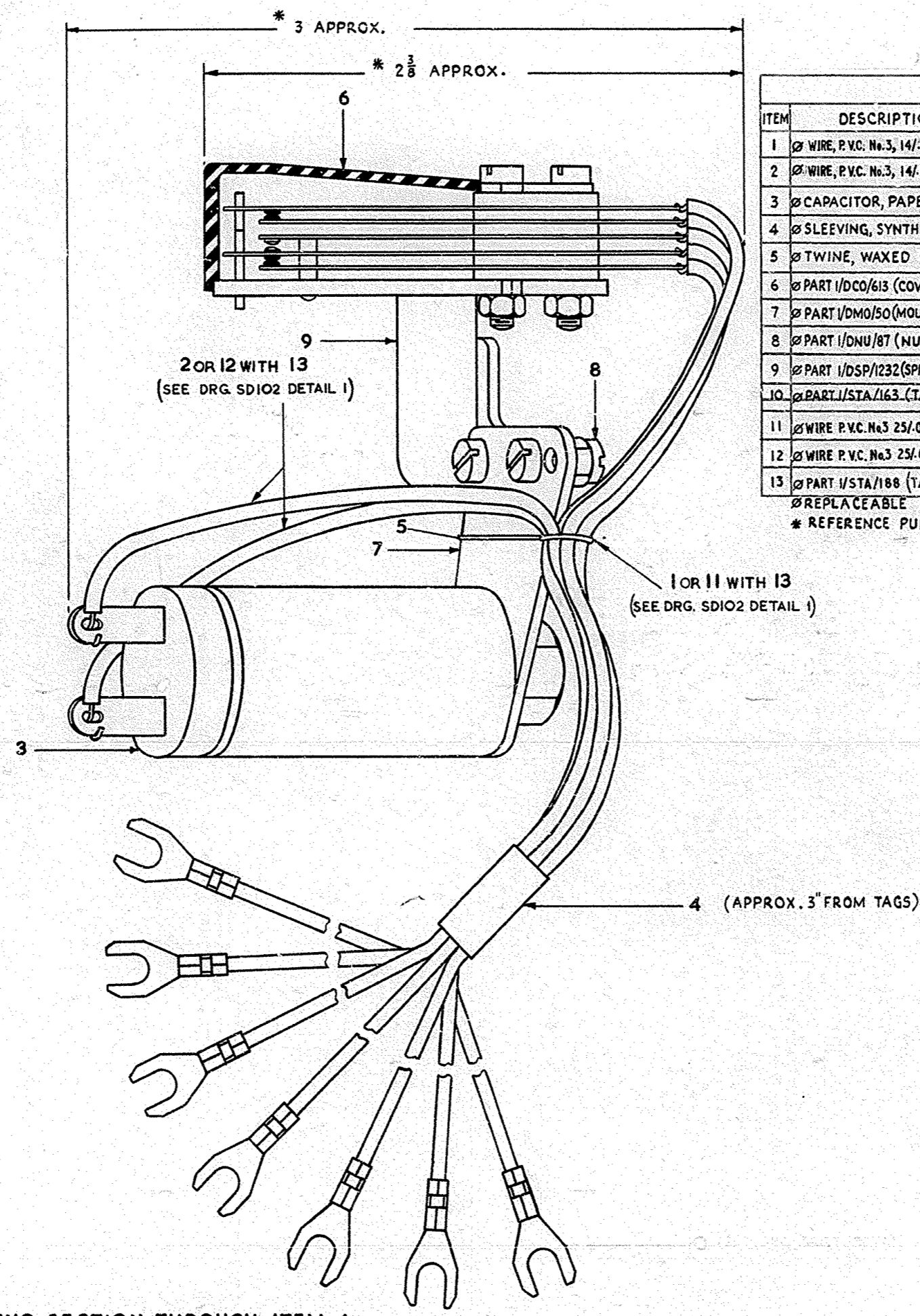


DRG. 91580



VIEW WITH WIRE LEADS, SLEEVING AND TAGS OMITTED



VIEWS SHOWING SECTION THROUGH ITEM 6

SCHEDULE									
ITEM	DESCRIPTION.	DRG.	SPEC.	No. OFF.	No. OFF. ALTN. CON.	SCREWS, ETC.	MTL.	FINISH	No. OFF.
1	WIRE, P.V.C. No.3, 14/0048, 8"		CW109	5					
2	WIRE, P.V.C. No.3, 14/0048, 8"		CW109	2					
3	CAPACITOR, PAPER N° 7727	CD 957		1	1				
4	SLEEVING, SYNTHETIC RUBBER 1/2"			1	1				
5	TWINE, WAXED (FINE)		H354	AS REQD.	AS REQD.				
6	PART 1/DCO/613 (COVER, SPRING SET)	DCO/613		1					
7	PART 1/DMO/50 (MOUNTING, CAPACITOR)	DMO/50		1		SC 6BAx3/32	CH.HD.M.S.	Z.N.P. & PASS. OR Z.N.P. & LAC.	2
8	PART 1/DNU/87 (NUT, HEX, SLOTTED)	DNV/87		2	2				
9	PART 1/DSP/1232 (SPRING-SET, ASSEMBLY)	DSP/1232		1	1				
10	PART 1/STA/163 (TAG)	STA/163			7				
11	WIRE P.V.C. No.3 25/004, 8"		CW109	5	5				
12	WIRE P.V.C. No.3 25/004, 8"		CW109	2	2				
13	PART 1/STA/188 (TAG)	STA/188		7					

* REPLACEABLE ITEM
* REFERENCE PURPOSES ONLY

POST OFFICE ENGINEERING DEPT
S BRANCH

DISTRIBUTION
GENERAL

PO. GENERAL

REFERENCES
SEE SCHED DRG. SDIO2 SPEC. D.1000
SPEC. CW 109
SPEC. M354
" 5850
ASSEMBLY DRG. WIRING DGM
N 808

FILE B.T.T.D.C
TECH. GEN. 6 SPEC. 5 850

SCALE: 2 AND AS INDICATED THIRD ANGLE PROJECTION

DECIMAL DIMENSIONS NOT TOLERANCED SUBJECT TO
APP'D IN SI/ SECTION D.R.N. } E.T. LTD.
T.C.D. }
C.K.D. CONTRS. }
DATE 22. 12. 61

AMENDMENT SUFFIX

ITEMS 1 & 2: - WERE CORDAGE TYPE 'E' 8.3.63 A

ITEMS 1 & 2: - WERE 7/0076 & REF TO 25/004 TRANSFERRED TO ITEMS 11 & 12 RESPECTIVELY. ITEMS 11-13 & ALTERNATIVE CONSTRUCTION ADDED. 16.7.64 B

ITEM 10 & ALTN. CON. DELETED U.N. 50.4.65 C

FOR SUPERSEED

ADAPTER,
PLAN SET N°1
ASSEMBLY

DRG 91580

DIMENSIONS IN INCHES

E
N23517A1

MASTER

TRIM TO THESE LINES 13/24

E-IN-C 211
GEN. EN. 0003

1/DO