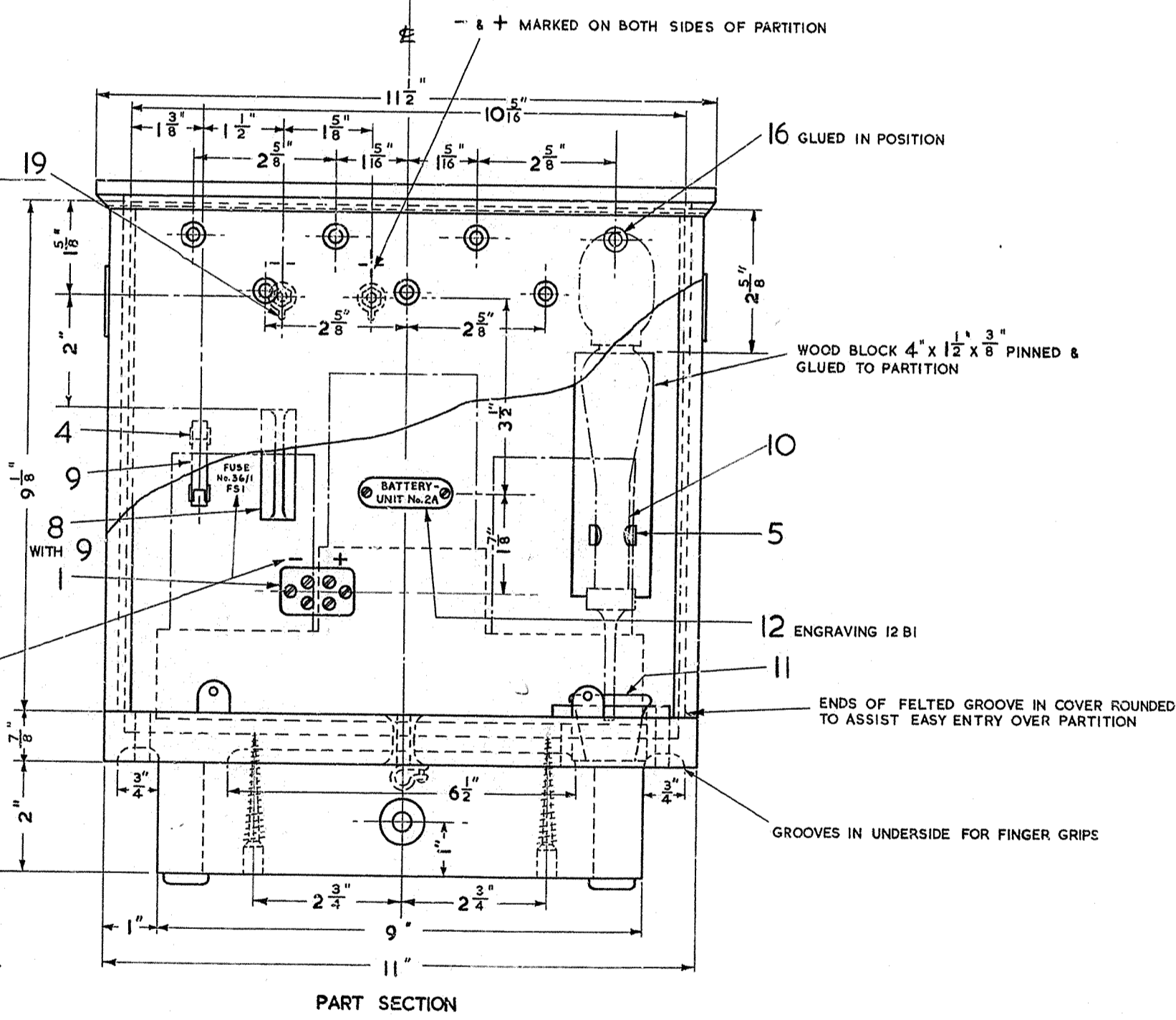
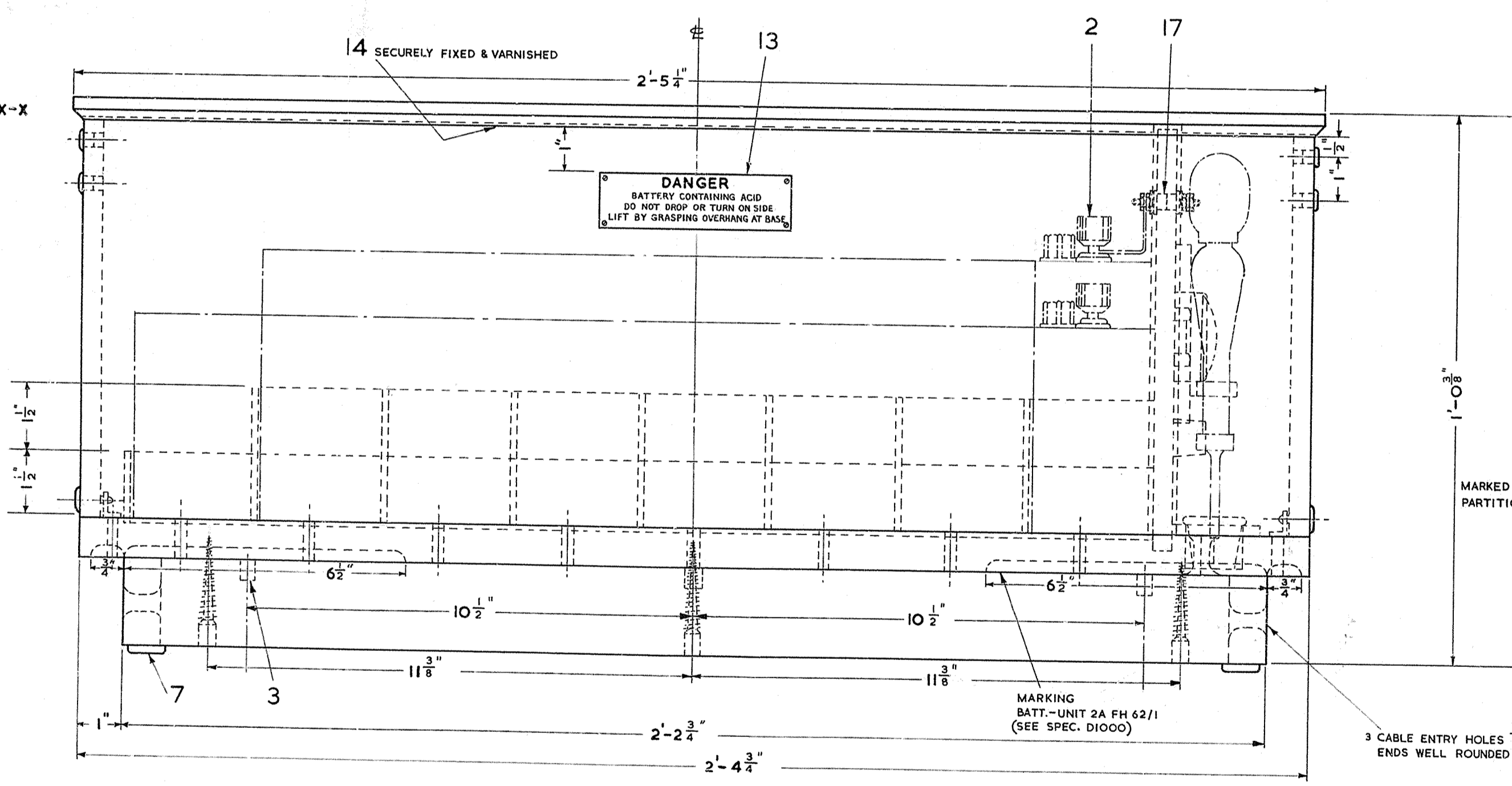
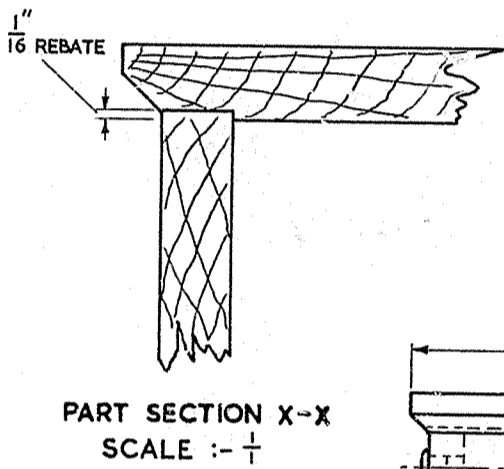
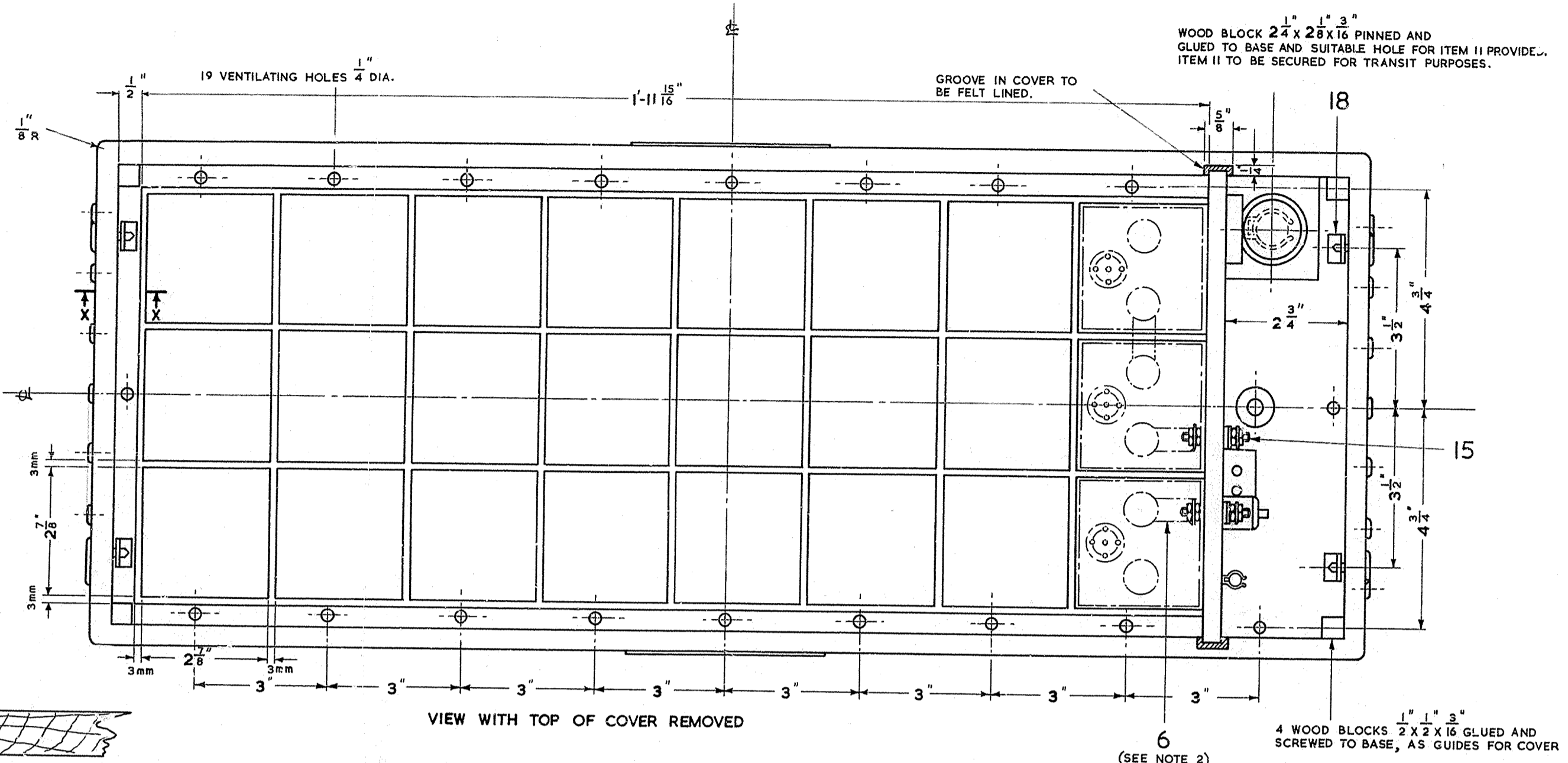


POST OFFICE ENGINEERING DEPT. S BRANCH	
DISTRIBUTION GENERAL	
REFERENCES	
SEE SCHED. 1	SPEC D1000
	SPEC. B.S. 381C
	SPEC. DEF1420
ASSEMBLY DRG.	WIRING DGM. N 658
FILE S 2406	SPEC. —
SCALE: 1/2 INDICATED	THIRD ANGLE PROJECTION
DECIMAL DIMENSIONS NOT TOLERANCED SUBJECT TO	
APP'D IN S3 SECTION	DRN. <i>MDW</i>
<i>M.A.</i>	TCD. <i>e.e.c.</i>
<i>M.A.</i>	CKD. <i>MB</i>
	DATE: 8.1.62
AMENDMENT SUFFIX	
INTNL FINISH WAS BITUMINOUS ACID RESISTING PAINT, 2 1/2" DIM. IN PART SECTION VIEW ADDED <i>M.A. 12.7.62</i>	A
ITEM 18 WAS 3/16" I.D. <i>M.A. 12.7.62</i>	B
INTERNAL FINISH CHANGED <i>M.A. 12.7.62</i>	C
ITEM 5 WAS 2 OFF ITEM 10 PICTORIAL AMENDED <i>M.A. 12.7.62</i>	D

ITEM	CCT.CODE	DESCRIPTION	DRG.	SPEC.	No. OFF	SCREWS ETC.	MTL.	FINISH	No. OFF
1		BLOCK, TERMINAL No. 211/2	71012		1	WD. SC. No. 6 X 3/8" CSK. HD.	BR.	—	2
2		CELL, SECONDARY No. 10			24				
3		CLIP No. 61C	CD737		3	WD. SC. No. 4 X 1/2" RD. HD.	BR.	—	3
4		CLIP No. 86	CD1623		2	WD. SC. No. 2 X 3/8" RD. HD.	BR.	—	2
5		CLIP, TERRY & Co. No. 81/1 PLASTIC COVERED (OR EQUIV)			1	WD. SC. TO SUIT	BR.	—	1
6		CONNECTOR, SECONDARY CELL No. 10 A	H/TC 457		25				
7		DOMES OF SILENCE 7/8" DIA.			4				
8		FUSE, MOUNTING No. 136A	63282		1	WD. SC. No. 6 X 3/8" CSK. HD.	BR.	—	1
9	FS 1	FUSE No. 36/1	CD188		2				
10		HYDROMETER No. 18 A	P/TC 462		1				
11		INKWELL CHINA OPEN TOP No. 1 B. EDUCATIONAL SUPPLIES ASSOC. LTD. (OR EQUIV)			1				
12		LABEL No. 164	62554		1	WD. SC. No. 2 X 1/2" CSK. HD.	BR.	—	2
13		LABEL No. 417A	91633		2	WD. SC. No. 4 X 1/2" CSK. HD.	BR.	—	8
14		LABEL DGM. N 658	DGM. N 658		1				
15		STUD, 2 B.A. BRASS X 1 1/2"			2	NUT HEX. 2 B.A. THIN WASHER 2 B.A. SMALL	BR.	NI. P. MT.	8
16		PART 12/SBU/81 (BUSH, INSULATING)	SBU/81		14				10
17		PART 21/SBU/65 (BUSH, INSULATING)	SBU/65		4				
18		PART 9/SLO/17 (LOCK, SCREW)	SLO/17		4				
19		PART 12/STA/70 (TAG)	STA/70		2				

\* ITEMS TO BE REQUISITIONED SEPARATELY & FITTED LOCALLY



**MATERIAL:**— BASE & PLINTH — 3/8" PINE. COVER & PARTITION — 12mm RESIN BONDED PLYWOOD. CELL PARTITIONS — 3mm RESIN BONDED PLYWOOD.

**CONSTRUCTION:**— PLINTH TO BE SCREWED & GLUED TO BASE. COVER — 4 SIDES REBATED INTO TOP & PINNED (PINS PUNCHED & HOLES FILLED). SIDES TO BE JOINTED USING A BOX JOINT. PARTITION BETWEEN CELLS & HYDROMETER RECESSED INTO BASE & FITTED INTO GROOVE IN COVER. GROOVE TO BE LINED WITH FELT. 3 OUTSIDE CELL PARTITIONS ONLY TO BE RECESSED INTO BASE. CENTRE ROW, OMITTING END ONE TO HAVE WOODEN BLOCKS 1/2" THICK FITTED TO RAISE CELLS ABOVE OUTSIDE ROWS. ALL JOINTS TO BE GLUED WITH SYNTHETIC RESIN GLUE.

**FINISH:**— ALL INTERNAL SURFACES, 1 COAT PRIMER AND FINISH ACID AND ALKALI RESISTING PAINT TO D.E.F. 1420 COLOUR G31 B.S. 381C TOP & EDGE OF COVER, EDGE OF BASE AND PLINTH PAINTED ELEPHANT GREY. SIDES PAINTED FRENCH GREY. EXTERNAL FINISH TO BE EGGSHELL. THE COLOURS SHALL BE UNIFORM AND SHALL MATCH THE STANDARDS WHEN VIEWED BY DAYLIGHT OR BY ARTIFICIAL LIGHT (TUNGSTEN OR FLUORESCENT). THE STANDARDS CAN BE INSPECTED ON APPLICATION TO THE ENGINEERING DEPT, TEST & INSPECTION BRANCH, STUDD STREET, LONDON N.1.

**NOTES:**— 1. WIRING OF ITEMS 1, 8 & 15 TO BE IN WIRE P.V.C. No. 3 1/16 12 1/2 lb TO DGM. N 658.

2. ITEM 6 TO BE SECURELY ATTACHED TO EACH BATTERY-UNIT.

FOR SUPERSEDED

BATTERY-UNIT  
No. 2A  
(MARK 1)