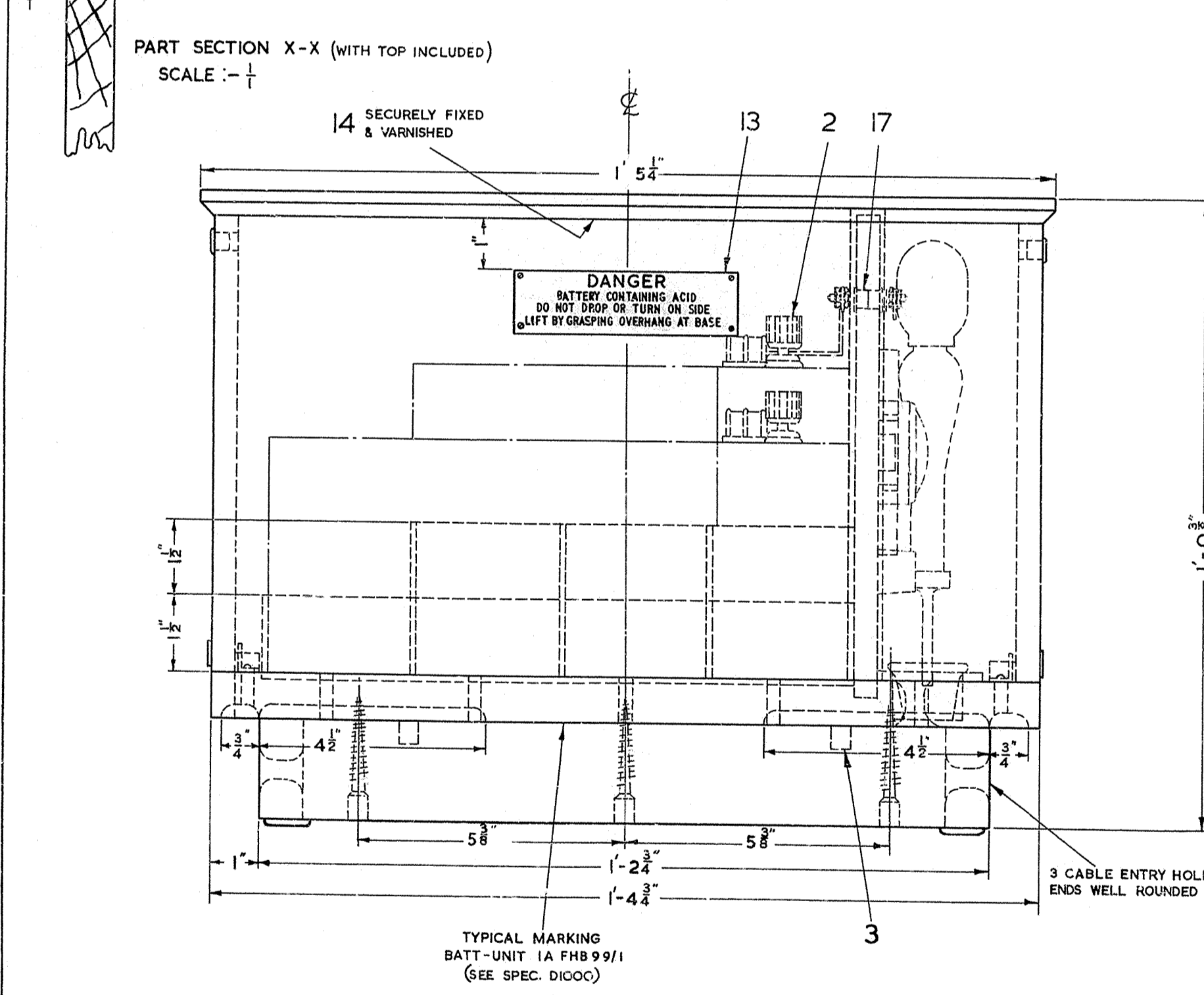
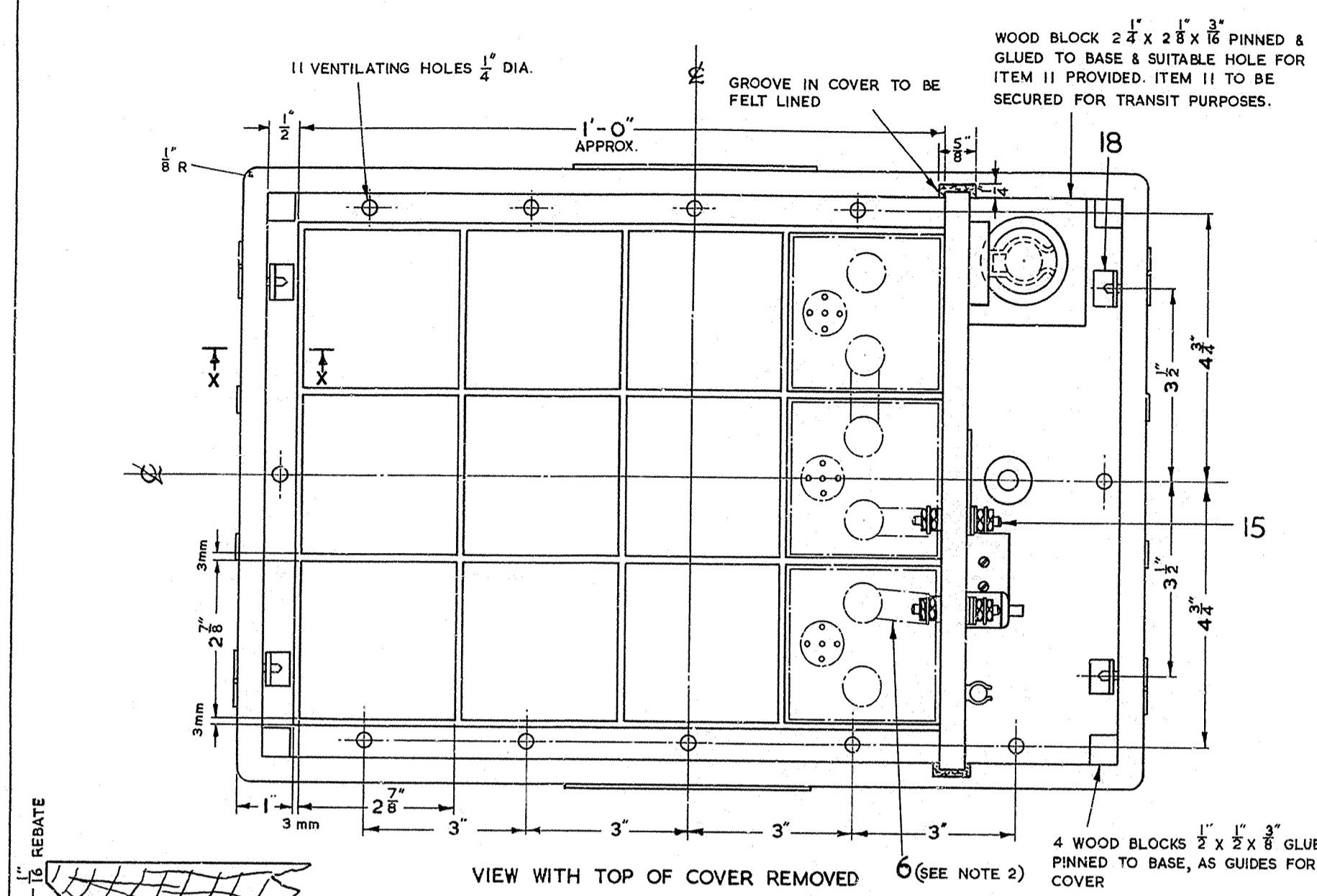
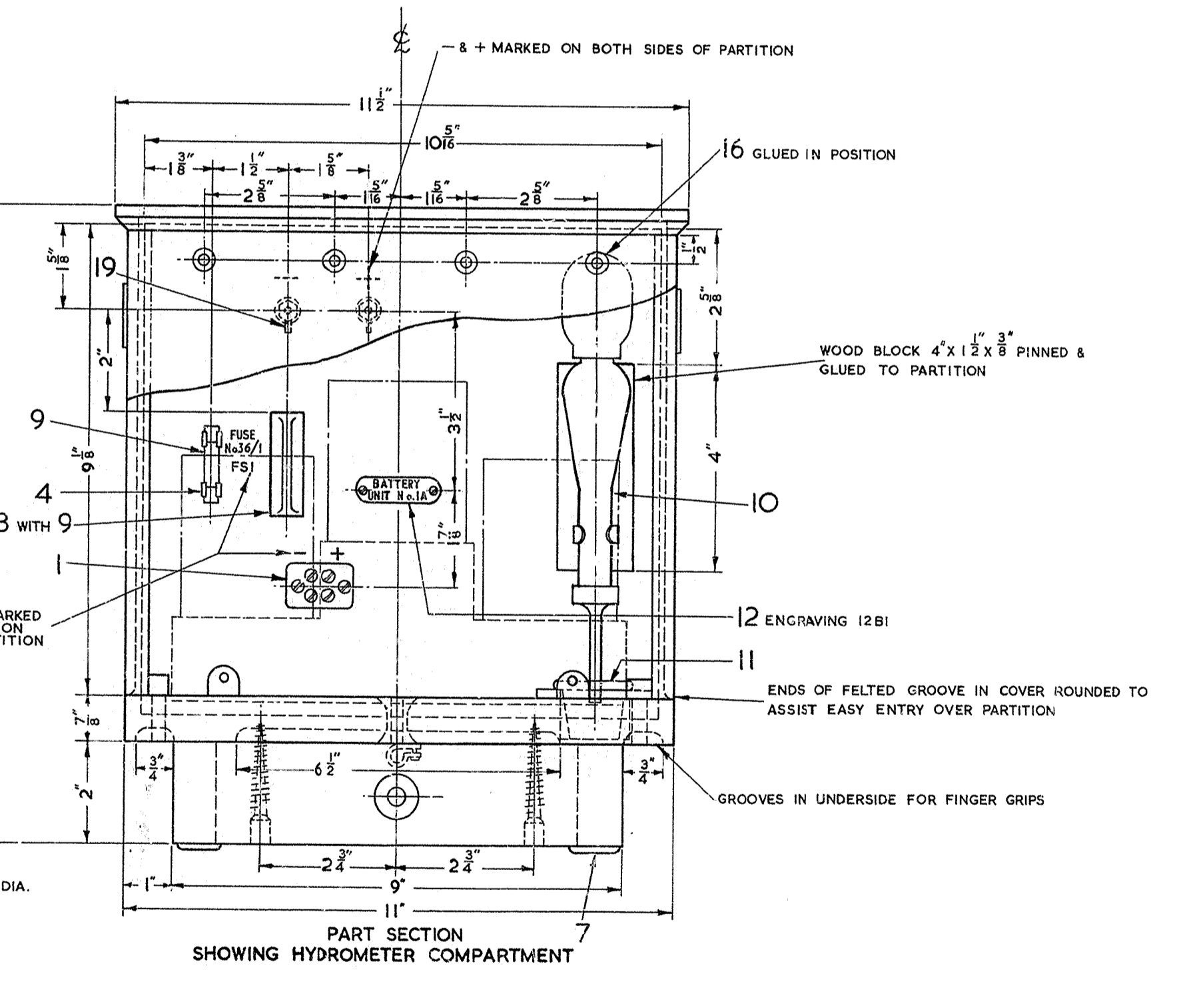


DRG 91631



ITEM	CCT CODE	DESCRIPTION	DRG.	SPEC.	No. OFF	SCREWS, ETC.	MTL.	FINISH	No. OFF
1		BLOCK, TERMINAL No. 21/2	71012		1	WD. SC. No. 6 X 3/4 CSK. HD.	BR.	---	2
2		CELL, SECONDARY, PORTABLE, No. 10			12				
3		CLIP No. 61C	CD797		2	WD. SC. No. 4 X 1/2 RD. HD.	BR.	---	2
4		CLIP No. 96	CD1623		2	WD. SC. No. 2 X 3/8 RD. HD.	BR.	---	2
5		CLIP TERRY & CO. No. 81/1 PLASTIC COVERED (OR EQUIV)			1	WD. SC. TO SUIT	BR.	---	1
6		CONNECTOR SECONDARY CELL No. 10A	P/TC457		13				
7		DOMES OF SILENCE 3/8 DIA.			4				
8		FUSE, MOUNTING No. 136A	63282		1	WD. SC. No. 6 X 3/8 CSK. HD.	BR.	---	1
9	FS 1	FUSE No. 36/1	CD188		2				
10		HYDROMETER No. 18A	P/TC462		1				
11		INKWELL CHINA OPEN TOP No. 18, EDUCATIONAL SUPPLIES ASSOCN. LTD. (OR EQUIV)			1				
12		LABEL No. 164	62556		1	WD. SC. No. 2 X 1/2 CSK. HD.	BR.	---	2
13		LABEL No. 417A	91633		2	WD. SC. No. 4 X 1/2 CSK. HD.	BR.	NI. P.M.T.	8
14		LABEL DGM. N658	DGM.658		1				
15		STUD, 2 B.A. BRASS X 1 1/2"			2	NUT 2 B.A. HEX. THIN WASHER 2 B.A. SMALL	BR.	NI. P.M.T.	8
16		PART 12/SBU/81 (BUSH, INSULATING)	SBU/81		8		BR.	NI. P.M.T.	10
17		PART 21/SBU/35 (BUSH, INSULATING)	SBU/35		4				
18		PART 9/SLO/17 (LOCK, SCREW)	SLO/17		4				
19		PART 12/STA/70 (TAG)	STA/70		2				

\* ITEMS TO BE REQUISITIONED SEPARATELY & FITTED LOCALLY



**MATERIAL :-** BASE & PLINTH - 7/8 PINE. COVER & PARTITION - 12mm RESIN BONDED PLYWOOD. CELL PARTITIONS - 3mm RESIN BONDED PLYWOOD.

**CONSTRUCTION :-** PLINTH TO BE SCREWED AND GLUED TO BASE. COVER - 4 SIDES REBATED INTO TOP AND PINNED (PINS PUNCHED AND HOLES FILLED). SIDES TO BE JOINTED USING A BOX COMB JOINT. PARTITION BETWEEN CELLS AND HYDROMETER RECESSED INTO BASE AND FITTED INTO GROOVE IN COVER, GROOVE TO BE LINED WITH FELT. 3 OUTSIDE CELL PARTITIONS ONLY TO BE RECESSED INTO BASE, CENTRE ROW, OMITTING END ONE, TO HAVE WOODEN BLOCKS 1 1/2" THICK FITTED TO RAISE CELLS ABOVE OUTSIDE ROWS. ALL JOINTS TO BE GLUED WITH SYNTHETIC RESIN GLUE.

**FINISH :-** ALL INTERNAL SURFACES, 1 COAT PRIMER AND FINISH ACID & ALKALI RESISTING PAINT TO DEF. 1402, COLOUR 631 SPEC. B.S. 381C. TOP EDGE OF COVER, EDGE OF BASE AND PLINTH PAINTED ELEPHANT GREY. SIDES PAINTED FRENCH GREY. EXTERNAL FINISH TO BE EGGSHELL. THE COLOURS SHALL BE UNIFORM AND SHALL MATCH THE STANDARDS WHEN VIEWED BY DAYLIGHT OR BY ARTIFICIAL LIGHT (TUNGSTEN OR FLUORESCENT). THE STANDARDS CAN BE INSPECTED ON APPLICATION TO THE ENGINEERING DEPT. TEST & INSPECTION BRANCH, STUDD STREET, LONDON N1.

- NOTES :-**
1. WIRING OF ITEMS 1, 8 & 15 TO BE IN WIRE P.V.C. No. 3 1W/12 1/2 lb TO DGM. N658
  2. ITEM 6 TO BE SECURELY ATTACHED TO EACH BATTERY-UNIT

POST OFFICE ENGINEERING DEPT  
S BRANCH

DISTRIBUTION GENERAL

REFERENCES

SEE SCHED	SPEC. D1000
ASSEMBLY DRG	WIRING DGM N658
FILE S2406	SPEC
SCALE - 1 AND AS 2 INDICATED	THIRD ANGLE PROJECTION
DECIMAL DIMENSIONS NOT TOLERANCED SUBJECT TO	
APP'D IN SECTION	DRN. J.B.W.
	T.C.D. M.G.S.
	C.K.E. J.B.
	DATE 5.2.62

AMENDMENT SUFFIX

INTNL. FINISH WAS BITUMINOUS ACID RESISTING PAINT	A
ITEM 18 WAS 3/SLO/17	B
TYPICAL MARKING UPDATED. PAINT WAS TO SPEC. DEF. 1116 COLOUR ELEPHANT GREY.	C
ITEM 5 WAS 2 OFF ITEM 10 PICTORIAL AMENDED	D

FOR SUPERSEDED

BATTERY-UNIT  
No. 1A  
(MARK I)

DRG 91631