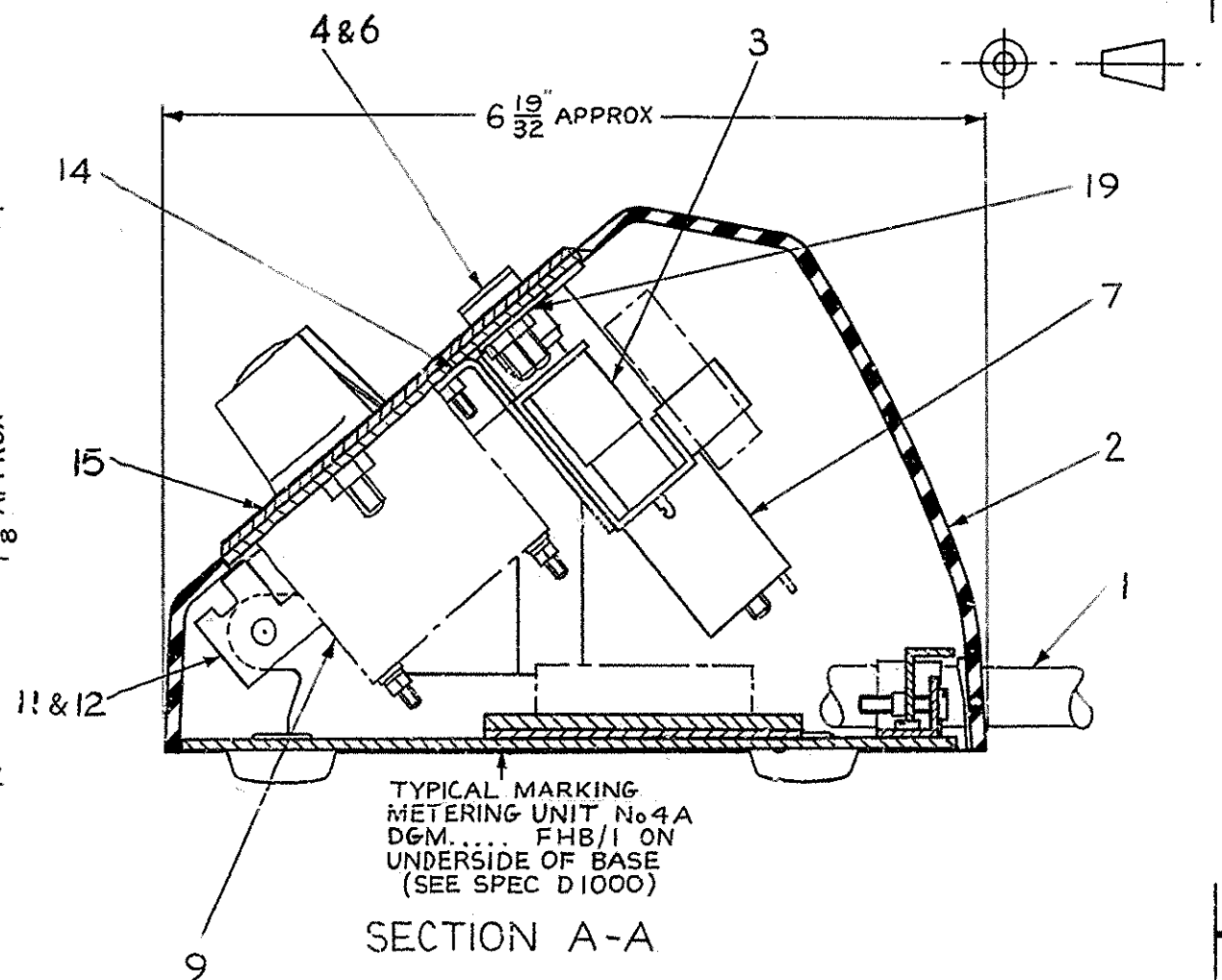


PART VIEW OF BASE WITH COVER REMOVED



SECTION A-A

- NOTES:-
1. CABLE ENTRY SLOT IN COVER TO BE $.587 \pm .006$ " WIDE
 2. CABLE CLAMP SCREWS ON PART 1/DBA/109 TO BE $1 \frac{1}{8}$ " CH.HD.
 3. TAILS TO BE CUT AND TERMINATED IN ACCORDANCE WITH DGM. SAW 82790.

DRN <i>AD</i> CKD # A2 A3 CERTIFICATION <i>[Signature]</i> DATE 8.10.68	AMENDMENT	ISSUE	TOLERANCES EXCEPT WHERE OTHERWISE STATED	MATERIAL	FINISH	DO NOT SCALE
						REFERENCES SPEC D1000 DGM SAW 82790 SEE SCHEDULE
				METERING UNIT No. 4A (MARK 1) ASSEMBLY		
POST OFFICE TELECOMMUNICATIONS HQRS TD 1-5-1 SECTION					92989 SHT 1-3	