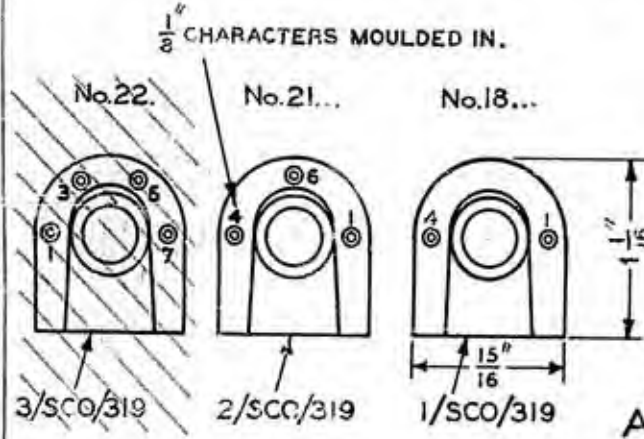
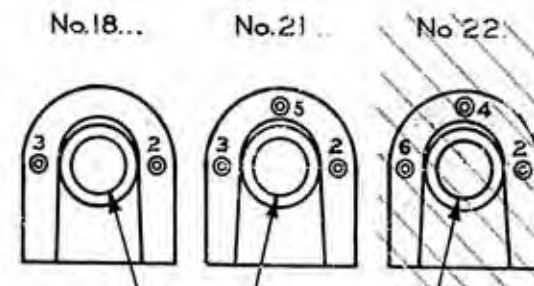


TYPICAL MARKING TO BE ON PAPER LABEL SECURED IN POSITION AND LEGIBLE THROUGH OUTER COVERING OF EMPIRE CLOTH.



VIEWS SHOWING POSITIONS OF TAGS.

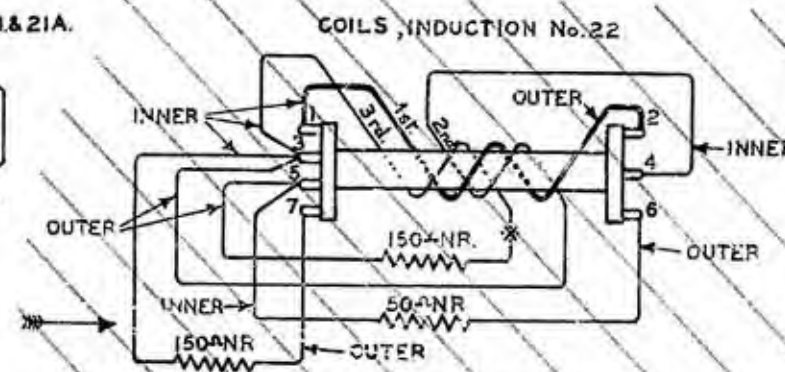
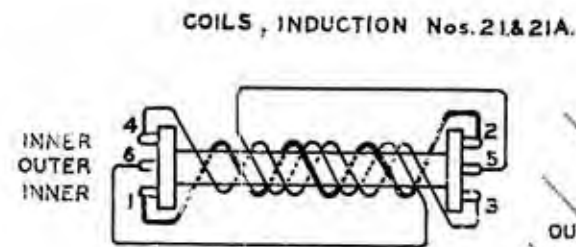
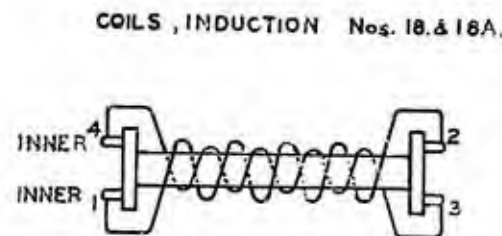


FOR CORE DETAILS, SEE SPEC. VIEWS SHOWING POSITIONS OF TAGS.

NOTE :- COIL, INDUCTION No. 21A. SHOWN AS TYPICAL.

ITEM	DESCRIPTION	QUANTITY					DRG.
		COIL, INDUCTION No.					
		18.	18A.	21.	21A.	22.	
A	PART 1/SBR/2. BRACKET, MTG.	-	2	-	2	-	SBR/2.
1/SCO/319	COIL, ASSEMBLY UNWOUND.	1	1	-	-	-	SCO/319.
2/SCO/319	" " " "	-	-	1	1	-	"
3/SCO/319	" " " "	-	-	-	-	1	"
3/SWA/15	WASHER, INSULATING	4	4	4	4	4	SWA/15
SCREWS, WASHERS ETC.							
A	SC. 6.B.A. X 1/4 CSK. HD. BR. NI. P.M.T.	-	2	-	2	-	-
	WD. SC. No. 4. X 3/8 CSK. HD. BR. NI. P.M.T. WRAPPED & TIED TO BRACKET	-	2	-	2	-	-
	SC. 6.B.A. X 1/4 CSK. HD. BR. NI. P.M.T. TO BE SUPPLIED FOR FIXING COIL, IND.	2	-	2	-	2	-
SPECIFICATIONS		D 862	D 880	D 1033			

DIAGRAMS OF CONNEXIONS.



* JOINTED INSIDE THE COIL. SEE SPEC. D.1033 THE INDUCTIVE WINDINGS TO BE WOUND ANTI-CLOCKWISE WHEN THE COIL IS VIEWED IN THE DIRECTION OF THE ARROW.

POST OFFICE ENGINEERING DEPT. E-IN-C'S OFFICE S BRANCH

DISTRIBUTION RESTRICTED.

REFERENCES SPEC D1000

SEE SCHED. ASSEMBLY DRG WIRING DGM

FILE S 330 S 1075/2 T.A.C. ITEM. SPECS. SEE SCHED.

SCALE: 1/1 AND AS INDICATED THIRD ANGLE PROJECTION

DECIMAL DIMENSIONS NOT TOLERANCED SUBJECT TO

APP'D. IN S1. SECTION DRN G.A.C. Mo. C. TCD G.A.C.

JOHN. R. GALL. CRD A.R.W.

DATE 26.11.32.

AMENDMENT SUFFIX

SUPERSESSION NOTE ADDED. C.F. J.L.S. A.E.W. 2.8.45. K

REDRAWN. COIL, INDUCTION Nos. 18A. & 21A. ADDED. H.G.B. J.L.S. 2-4-48. L

COIL, INDUCTION No. 22 DELETED. J.B. GALL. 21.4.58. M

COIL, INDUCTION No. 21A (MK.1) SUPERSEDES COIL, INDUCTION No. 12. DRG. 62203. COIL, INDUCTION No. 22 (MK.2) SUPERSEDED BY COIL, INDUCTION No. 27. DRG. 62207.

COILS, INDUCTION Nos. 18 & 18A (MARK I), & Nos. 21 & 21A (MARK I).

ASSEMBLIES.

TRIM TO THESE LINES 13" x 16"

EN-147 EN-147 EN-147

/D.O