

POST OFFICE ENGINEERING DEPT.
E-M-C'S OFFICE S BRANCH

DISTRIBUTION
GENERAL

REFERENCES

SEE SCHED. — SPEC. 21200

ASSEMBLY DRG. — WIRING DGM —

FILE — SPEC —

SCALE — 1/1 — THIRD ANGLE PROJECTION

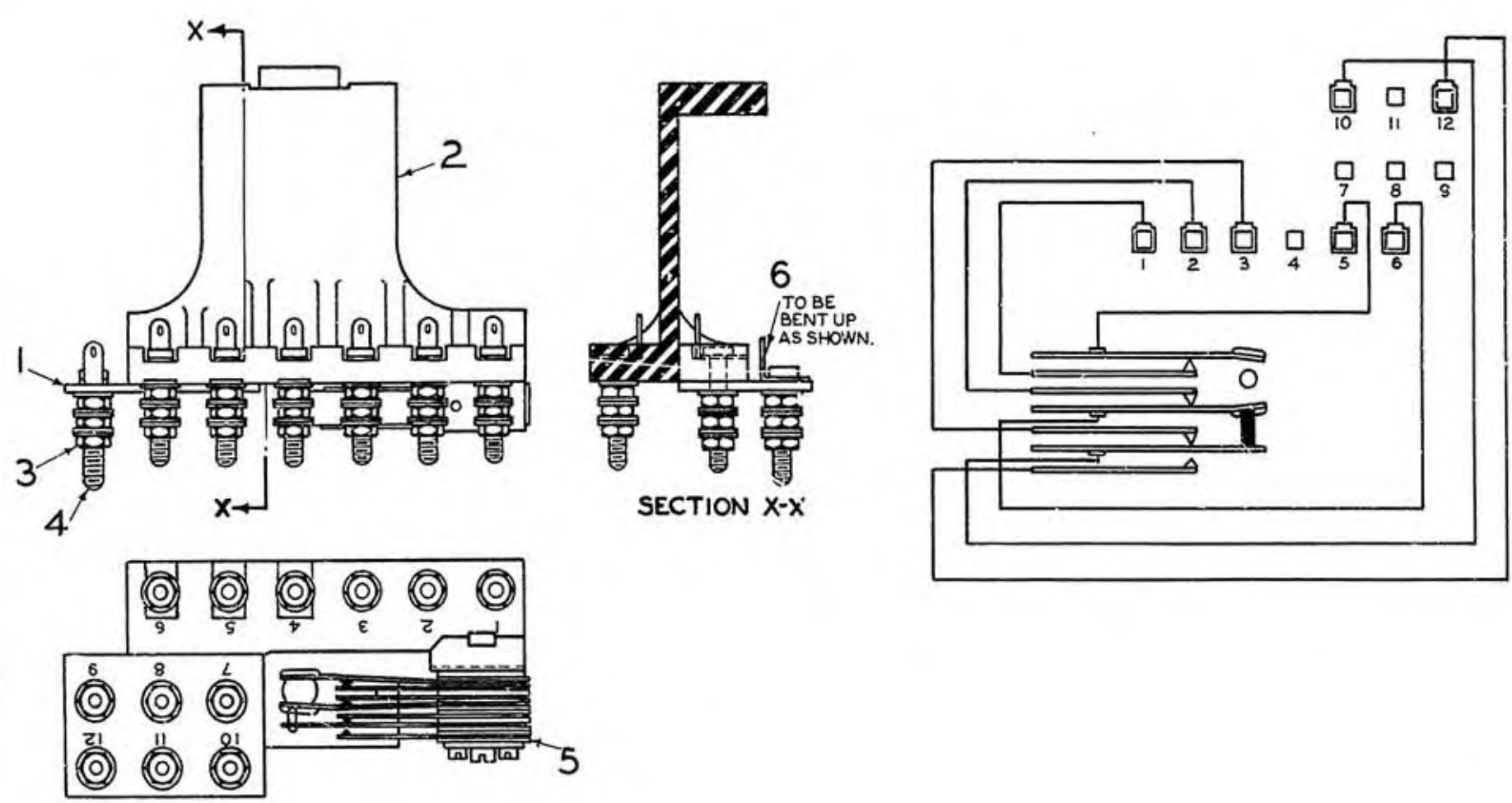
ALL DIMENSIONS NOT TOLERANCED SUBJECT TO —

APP'D. IN S1/1 SECTION DRN *SLH*
T.C.D. *H.G.S.*
CHKD. *[Signature]*
DATE 14. 12. 54.

AMENDMENT SUFFIX

ITEM 6 No. OFF WAS INCORRECTLY SHOWN.
H.G.S. Jan. H9/65 5.4.55. A

ITEM 5 WAS PART 1/SSP/703
[Signature] H.G.S. - 15.11.56. B



SCHEDULE									
COMPONENTS						SCREWS, ETC.			
ITEM	CCT. CODE	DESCRIPTION	DRG.	SPEC.	No. OFF	DESCRIPTION	MTL.	FINISH	No. OFF
1	—	1/DBL/72 (BLOCK, TERMINAL)	DBL/72	—	1				
2	—	1/SFR/19 (FRAME, SWITCH)	SFR/19	—	1				
3	—	1/SNU/51 (NUT, HEXAGON)	SNU/51	—	36				
4	—	2/SSC/65 (SCREW No. 4 BA. SPECIAL)	SSC/65	—	12	WASHER 4BA. SMALL	B. R.	NI. P.MATT	60
5	—	1/SSP/704 (SPRING SET ASSEMBLY)	SSP/704	—	1	SCREW 6 B.A. X 11/16" CH. HD.	B. R.	NI. P.MATT	1
						NUT 6 B.A. 18 7" SQ. X .094" DEEP.	B. R.	NI. P.MATT	1
6	—	1/STA/31 (TAG)	STA/31	—	12				

FIRST USE:- TELEPHONE No. 264

DO NOT SCALE
(A MICROFILM PROCESS PRINT)

PART 1/DSW/16
(SWITCH, ASSEMBLY)