

DIAGRAM E.C. 1579.

Drafted by	Drawn by	Checked by	Engr.	Approved by	Date	SUFFIX
W.C.	W.C.	R.D.		W.C.	23-11-21	
Amendment Particulars				Initials		
Note added				W.C. R.D. W.C.		2-10-33
SUPERSESSON NOTE ADDED				W.C. R.D. W.C.		16-5-51

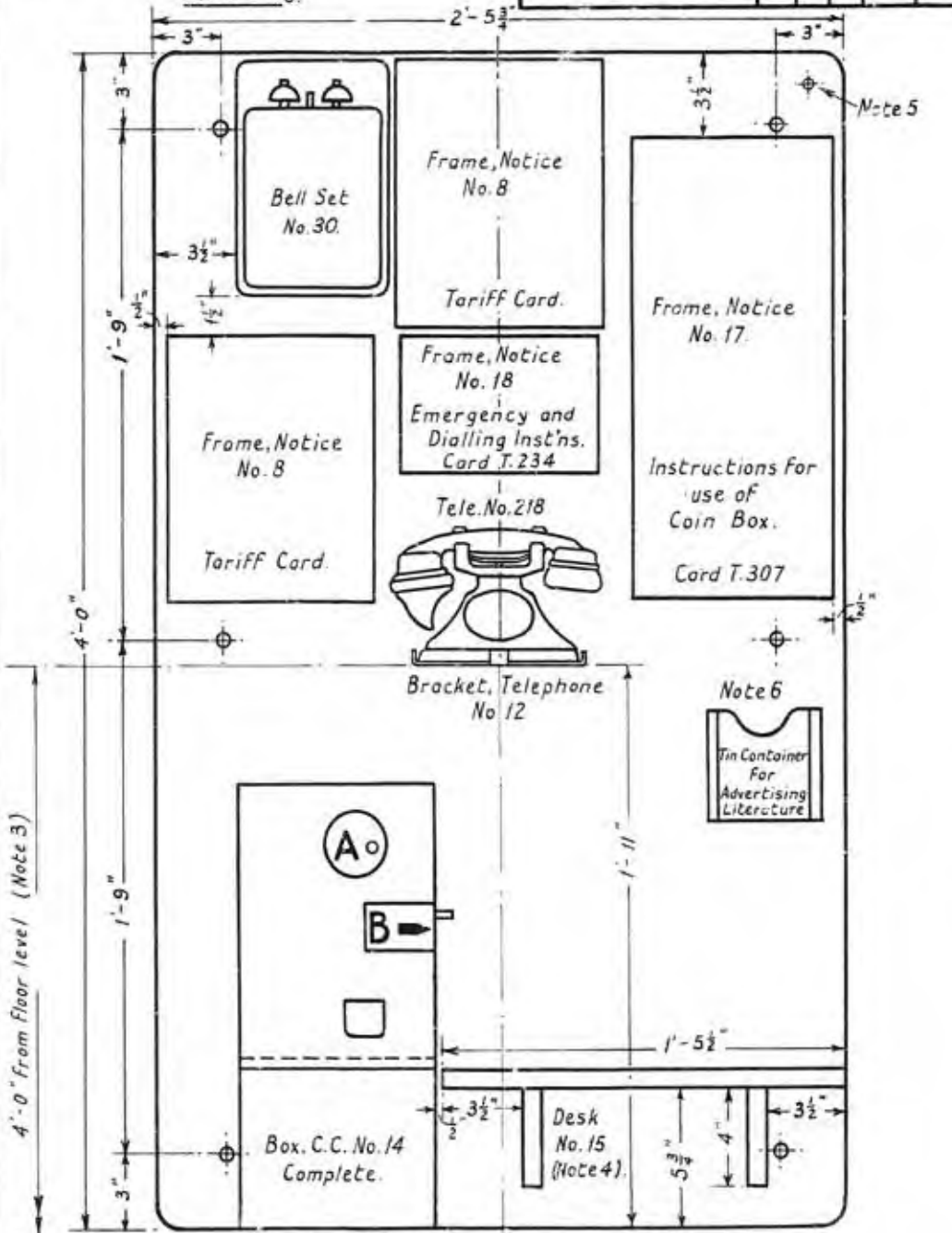
CALL OFFICE CABINETS.

Arrangement of Equipment for Prepayment  
 Call Office with Box, Coin, Collecting No. 14,  
 Complete and Telephone No. 218

Automatic System.

SUPERSEDED FOR NEW WORK BY DIAG. EC 1851

Scale: - 1/6.



- Notes:-
1. No wiring to appear on face of Wallboard.
  2. In non-standard cabinets the layout should conform as nearly as possible to that of the standard cabinet, and wallboard 48 x 29 3/4" will be used whenever the width of the cabinet permits. The wallboard will be mounted centrally between the sides of the cabinet in all cases.
  3. The bottom edge of Bracket, Tele. No. 12 should be not higher than 4'-0" from floor level.
  4. The directory should lie flat on Desk No. 15: The cord should be passed through hole in desk and fastened to desk bracket.
  5. In non-standard cabinets where the width does not permit the fitting of Desk No. 15, a Desk No. 17 should be provided, the directory being suspended from a screw eye fitted at the top right hand corner of the wallboard.
  6. The Tin-Container will be fitted only in cases indicated by the Controller L.T.S. or District Manager.
  7. When one tariff card only is required the Frame Notice No. 8 fitted above the Frame, Notice No. 18 should be omitted.