

CALL OFFICE CABINETS.

Arrangement of Equipment for Prepayment
Call Office with Box Coin Collecting No. 14,
Complete and Telephone No. 218 C.B.

Manual (C.B) System.

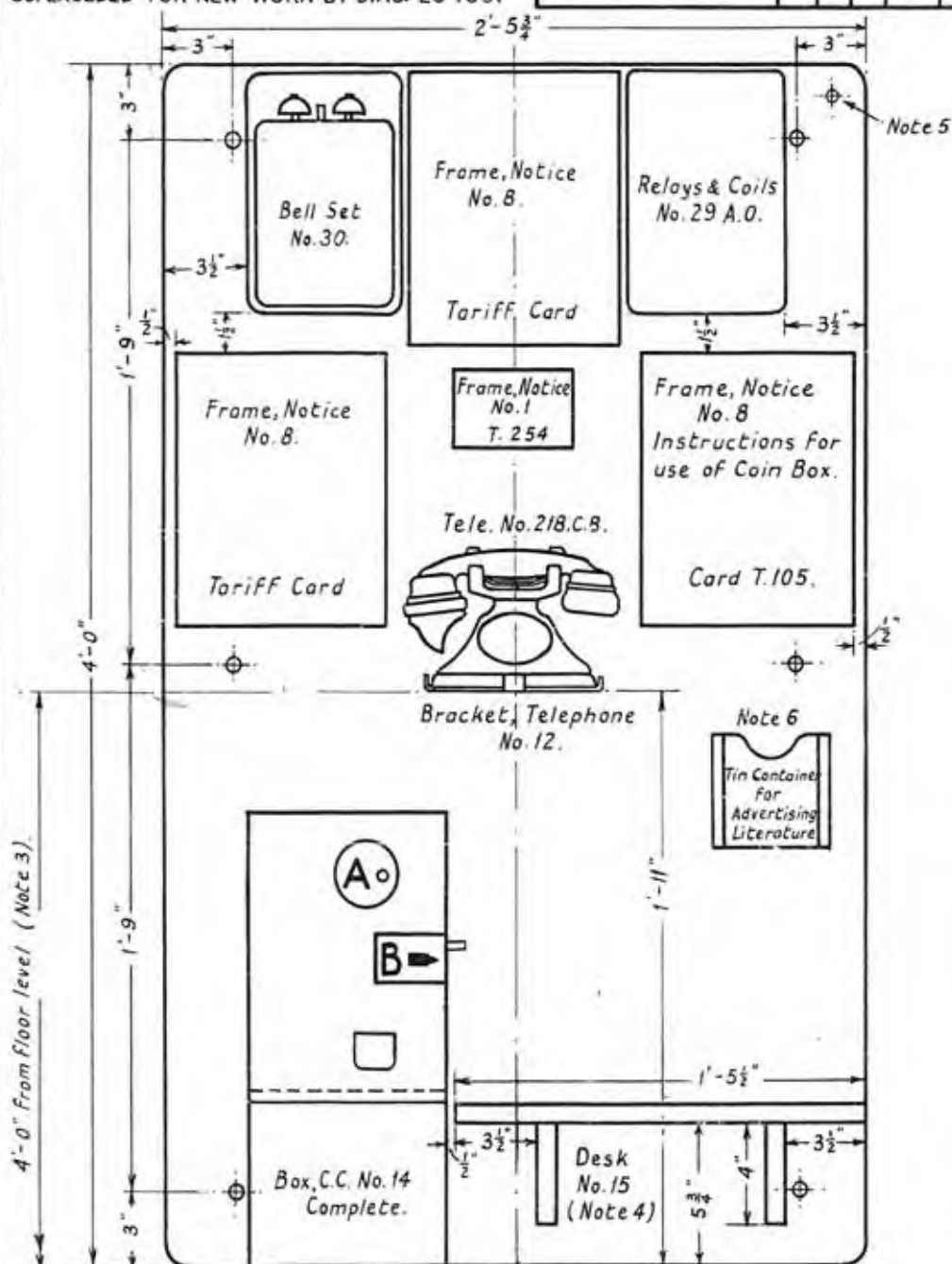
Scale: $\frac{1}{6}$

SUPERSEDED FOR NEW WORK BY DIAG. EC 1851

OFFICE OF THE ENGINEER-IN-CHIEF, G.P.O.

DIAGRAM E.C. 1580.

Drafted by	Drawn by	Checked by	Engr.	Approved by	Date	SUFFIX		
UD10	EB	PP	WLS	R.L.	23-12-32			
Amendment Particulars				Initials				
Note added				EB	PP	39	2-10-33	A
SUPERSESION NOTE ADDED				EB	PP	39	16-5-51	B



Notes:-

- No wiring to appear on face of Wallboard
- In non-standard cabinets the layout should conform as nearly as possible to that of the standard cabinet and wallboard 48" x 29 3/4" will be used whenever the width of the cabinet permits. The wallboard will be mounted centrally between the sides of the cabinet in all cases.
- The bottom edge of Bracket, Tele. No. 12 should be not higher than 4'-0" From Floor level.
- The directory should lie flat on Desk No. 15: The cord should be passed through hole in desk and fastened to desk bracket.
- In non-standard cabinets where the width does not permit the fitting of Desk No. 15, a Desk No. 17 should be provided, the directory being suspended from a screw eye fitted at the top right-hand corner of the wallboard.
- The Tin Container will be fitted only in cases indicated by the Controller L.T.5. or District Manager.
- When one tariff card only is required the Frame, Notice, No. 8, fitted above the Frame Notice No. 1 should be omitted.