

CALL OFFICE CABINETS.

Arrangement of equipment for prepayment
Call Office with Box, Coin, Collecting No.14
Complete, and Telephone No.218.

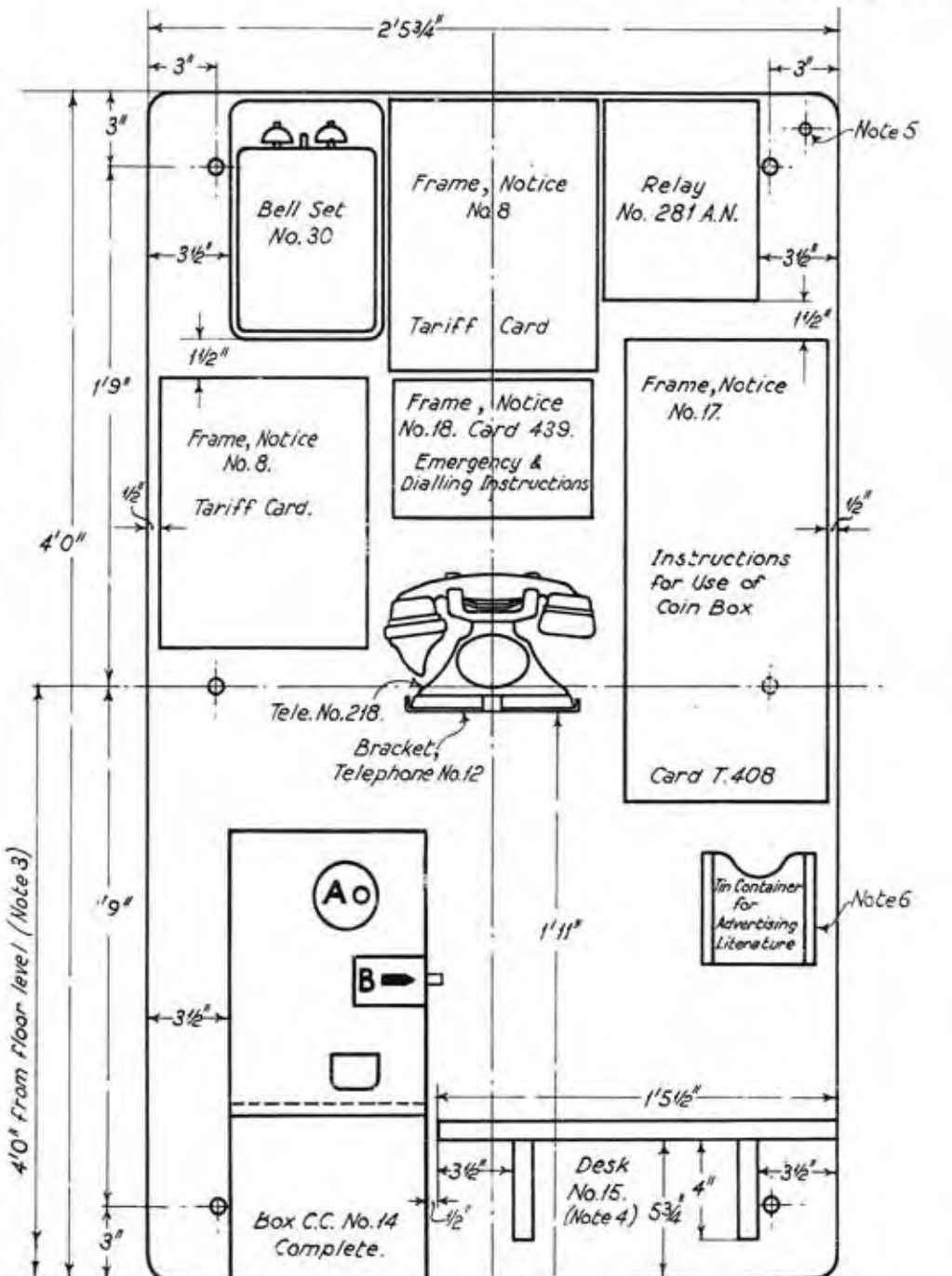
Rural Automatic System.

Scale:- 1/6.

OFFICE OF THE ENGINEER-IN-CHIEF, G.P.O.

DIAGRAM E.C. 1581

Drafted by	Drawn by	Checked by	Engr.	Approved by	Date	SUFFIX
W.D.	O.B.	P.D.	K.L.	S.L.	23-12-32	
Amendment Particulars				Initials		
Note added.				S.S.		2-10-33
						A



- Notes:-
- No wiring to appear on face of Wallboard.
 - In non-standard cabinets the layout should conform as nearly as possible to that of the standard cabinet and Wallboard 48"x29 3/4" will be used whenever the width of the cabinet permits. The Wallboard will be mounted centrally between the sides of the cabinet in all cases.
 - The bottom edge of Bracket, Telephone No.12 should be not higher than 4'0" from floor level.
 - The Directory should lie flat on Desk No.15. The cord should be passed through hole in desk and fastened to desk bracket.
 - In non-standard cabinets where the width does not permit the fitting of Desk No.15 a Desk No.17 should be provided, the Directory being suspended from a screw eye fitted at the top right-hand corner of the wallboard.
 - The Tin Container will be fitted only in cases indicated by the Controller L.T.S. or District Manager.
 - When one tariff card only is required the Frame Notice No.8 fitted above the Frame Notice No.18 should be omitted.