

APPR'D E.R. IN SI SECTION

ORIGINAL SIGNED  
 BY..... G.M.MADDOCK

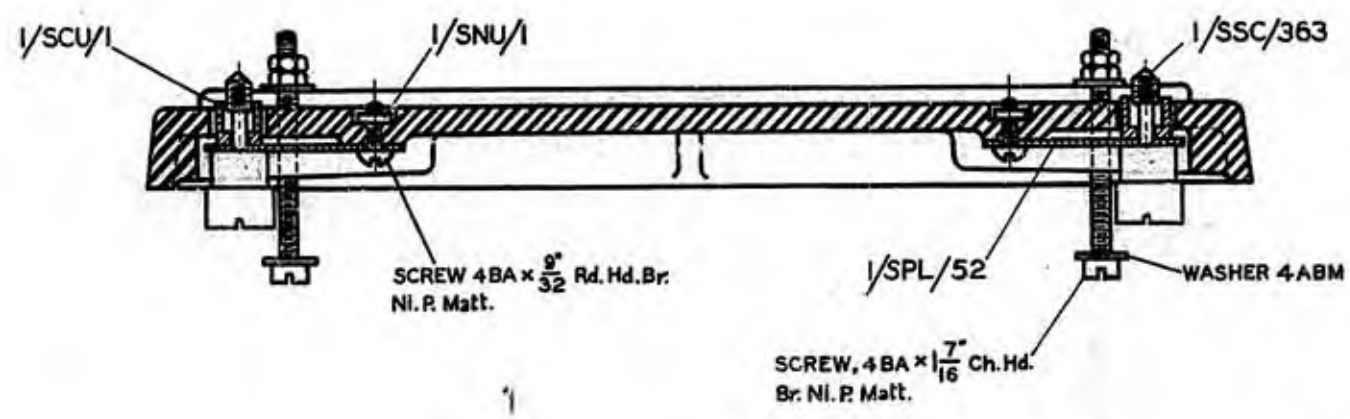
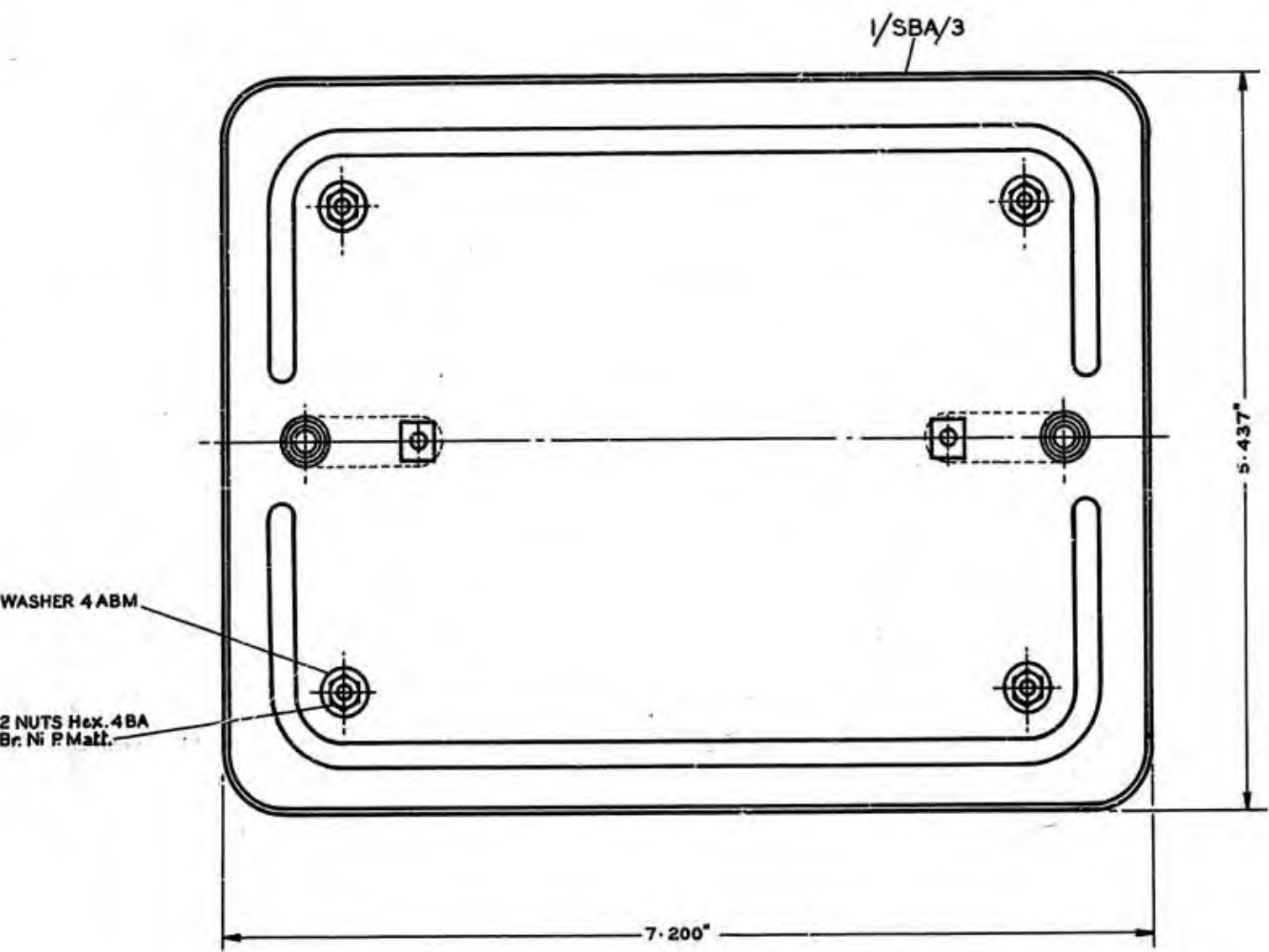
AMENDMENT. SUFFIX.

FORMERLY DRG. 12,154 NO AMENDMENT  
 J.E.B. A2/3310 J.H.D. J.E.D 29-8-38

REDRAWN, NO AMENDMENT.  
 A.C. A2/7239 J.D. 10-11-39

"BLACK" ADDED TO PART 1/SBA/3  
 21-9-45  
 PART 1/SSC/363 WAS 2/SSC/337  
 13-12-49

PART	QTY.
1/SSC/363	2
1/SCU/1	2
1/SPL/52	2
1/SNU/1	2
1/SBA/3 BLACK.	1
SCREW 4BA x $\frac{9}{32}$ Rd.Hd. Br. Ni. P. Matt. 32	2
SCREW 4BA x $\frac{7}{16}$ Ch.Hd. Br. Ni. P. Matt. 16	4
NUT, Hex. 4BA Br. Ni. P. Matt. 8	8
WASHER, 4ABM	8



**DO NOT SCALE**  
 (A MICROFILM PROCESS PRINT)

FIRST USE : TELEPHONE No. 238 MINUS CORD, USED WITH WALLBOARD D 60577

See Schedule D 1000,  
 DRAWINGS, DIAGRAMS, SPEC'NS.

PART 1/SBA/1  
 (BASEPLATE ASSEMBLY)

SPEC'N. —  
 SCALE : 1/1  
 DRG. SBA/1