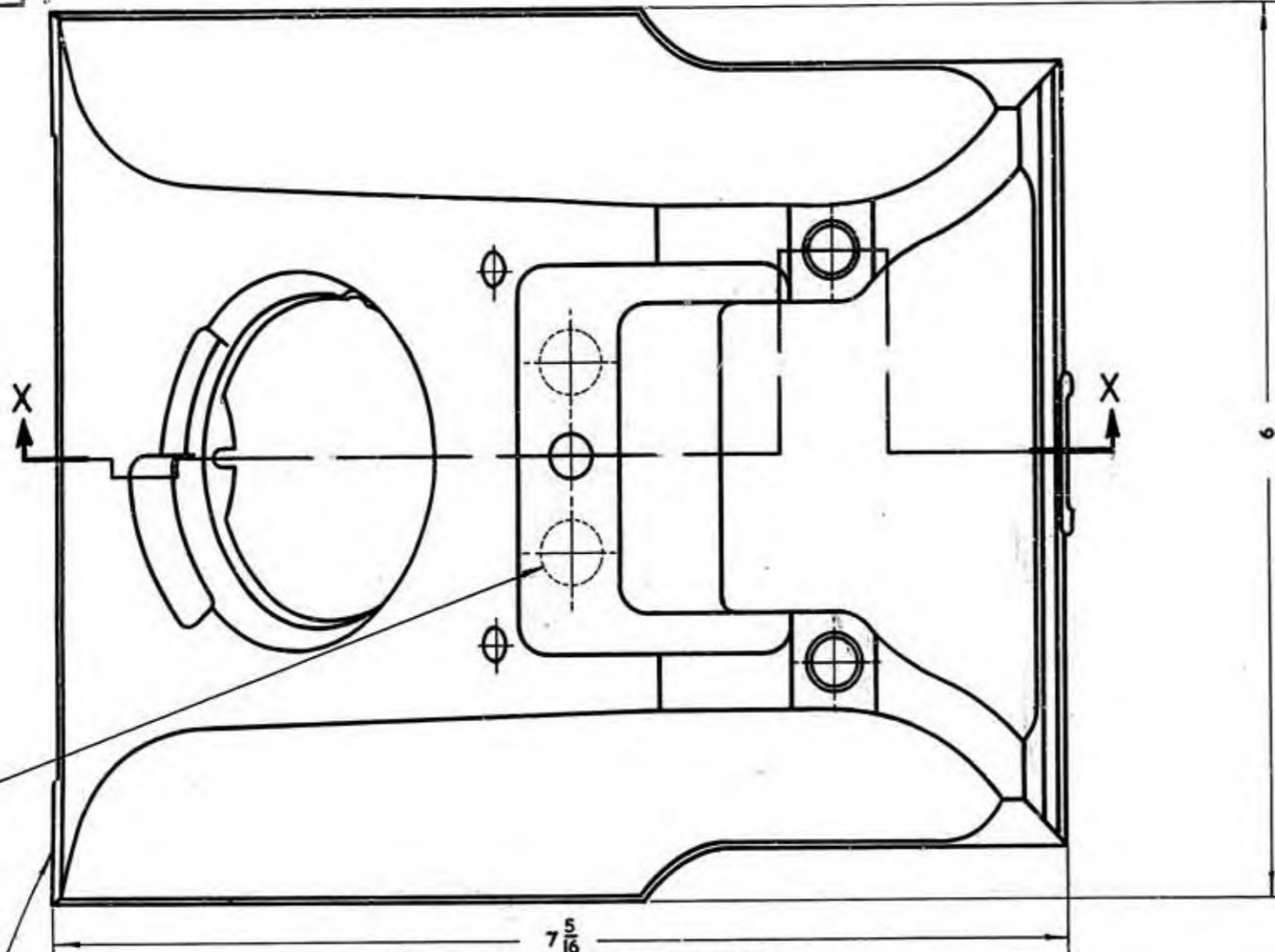
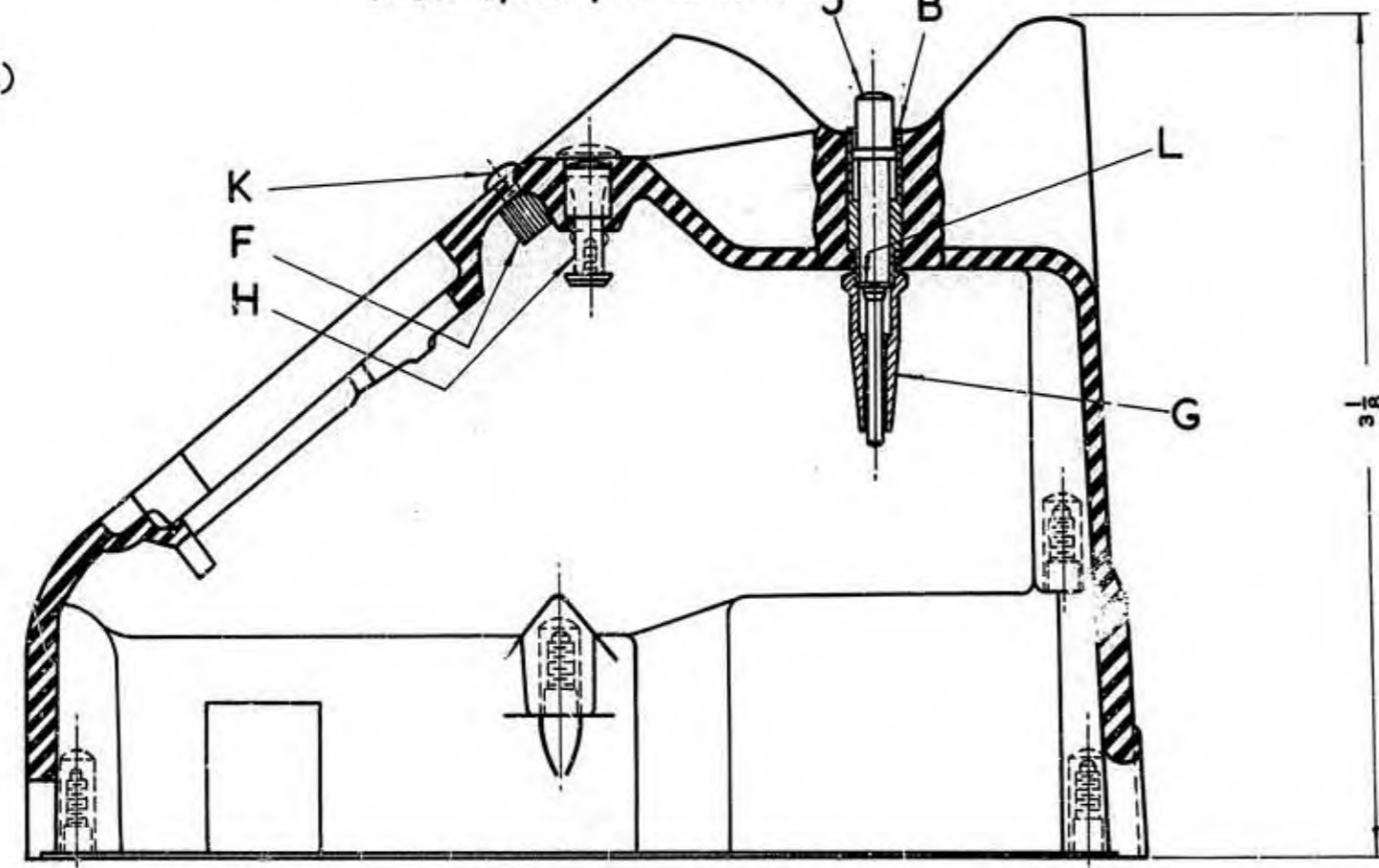


DRG. SCA/17



C,D or E  
(SEE SCHEDULE)

PART 2/SCA/47 SHOWN



SECTION X-X

DIMENSIONS IN INCHES

REF.	PART	DRG.	No. OFF		
			PART 1/SCA/17	PART 2/SCA/17	PART 3/SCA/17
A	1/DBU/11 (COLOUR) (BUTTON, DUMMY)	DBU/11	—	—	3
B	1/SBU/28 (BUSH, METAL)	SBU/28	2	2	2
C	1/SCA/20 (COLOUR) (CASE, COMBINED SET) (1 PIECE)	SCA/20	1	—	—
D	2/SCA/20 " " " " " "	SCA/20	—	1	—
E	3/SCA/20 " " " " " "	SCA/20	—	—	1
F	1/DNU/35 (NUT, CIRCULAR)	DNU/35	—	2	2
G	1/SNU/64 (NUT, HEXAGONAL)	SNU/64	2	2	2
H	1/SPL/325 (PLUNGER, COMPLETE)	SPL/325	—	1	—
J	1/SPL/326 (PLUNGER, SWITCH)	SPL/326	2	2	2
K	1/DSC/151 (SCREW, SPECIAL)	DSC/151	—	2	2
L	1/SSP/491 (SPRING, CLAMPING)	SSP/491	2	2	2

COLOURS :-  
BLACK, RED, IVORY & GREEN.

POST OFFICE ENGINEERING DEPT  
E-IN-C'S OFFICE 5 BRANCH

DISTRIBUTION  
RESTRICTED

REFERENCES  
SEE SCHED. SPEC. D 1009

ASSEMBLY DRG. WIRING DGM.

FILE S2500SCA/47/B.T.T.D.C. SPEC.

SCALE :- 1 AND AS THIRD ANGLE INDICATED SECTION

DECIMAL DIMENSIONS NOT TO BE ROUNDED OFF SUBJECT TO

APP'D. IN SI/1 SECTION DRN. D.H.J.  
ORIGINAL SIGNED BY TCD. D.H.J.  
F. REID. CKD. A.J.S.  
DATE 14.9.38

AMENDMENT SUFFIX

FORMERLY DRG. 12923.

SCHEDULE :-  
ITEM 1/SBU/27 DELETED. C  
A.H.S. T.C.W. C.W.A. 7.1.49

REDRAWN. SCHEDULE REVISED. D  
COLOURS UPDATED. PARTS  
3/SPL/325 & 1/SBU/4 DELETED.  
PART 1/DBU/11 ADDED.  
3.8.57 22.8.57

DO NOT SCALE  
(A MICROFILM PROCESS PRINT)

FOR SUPERSED

PARTS 1/SCA/17 (COLOUR)  
(CASE COMPLETE FOR  
MICROTELEPHONE  
SET)

DRG. SCA/17

TRIM TO THESE LINES 13x24

E-IN-C.211  
GEN. GEN. D0032

S/D.O.

MASTER