

PARTS 1 & 2/SSW/8.
(SWITCH, ASSEMBLY.)

DRG. SSW/8

Suffix: **A**
 Amendment: Part 2/12,155 added.
 3/26/38 M.S. C.P. 28.4.37.
 FORMERLY DRG. 12,155. PARTS 36/10,522 & 2/11,210
 DELETED. PART 1/11,210 REPLACED BY 2/SBL/12.
 R44. A2/4109 27-10-38

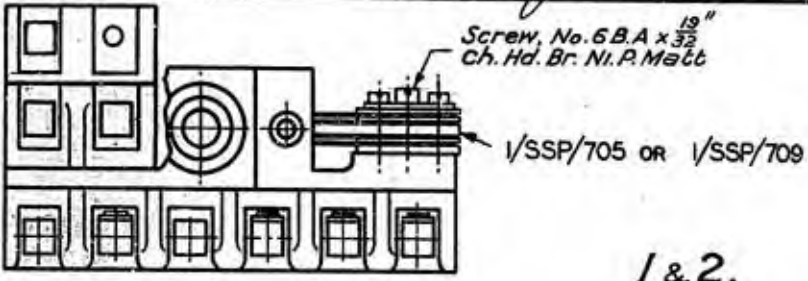
Drawings
 Diagrams
 & Spec'ns.
 See Schedule

Spec.D. 1000

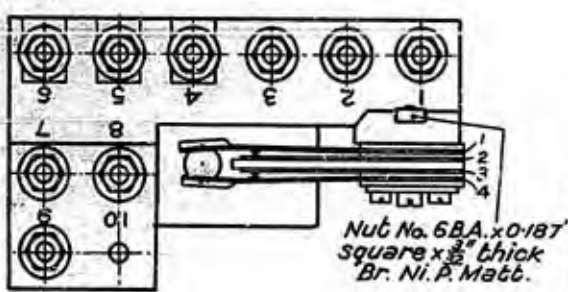
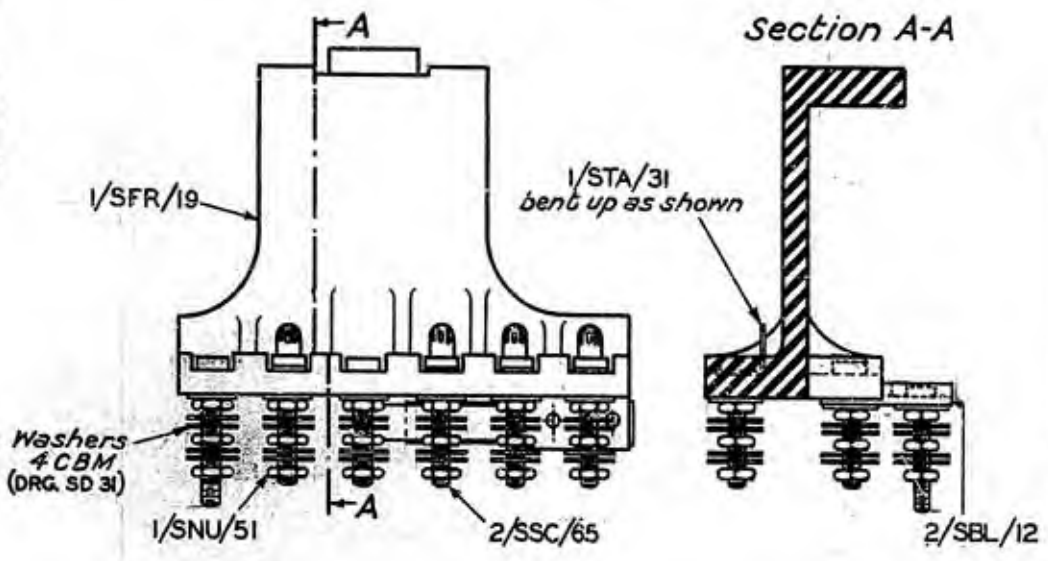
Scale: -1
 Drawn. *M.K.*
 Traced. *M.K.*
 Checked. *M.K.*
 Appr'd *ER* in S. Branch

File Ref.
 Date. 8.7.35

P. Maddock



1 & 2.



SCHEDULE.

PART	QUANTITY	
	1/SSW/8	2/SSW/8
2/SBL/12	1	1
1/SFR/19	1	1
1/SNU/51	27	27
2/SSC/65	9	9
1/SSP/705	1	—
1/SSP/709	—	1
1/STA/31	4	4
WASHER, 4 CBM (DRG. SD 31)	45	45
SCREW, 6 BA x 19/32 Ch. Hd., Br. Ni. P. Mt.	1	1
NUT, 6 BA .187 Sq. x .094, Br. Ni. P. Mt.	1	1

