

PARTS 1 & 2/SSW/9.
(SWITCH ASSEMBLY)

DRG. SSW/9

SPEC'N. — B.T.T.D.C.

Scale :- 1/16" = 1"

Drawn. Traced. Checked. Approved.

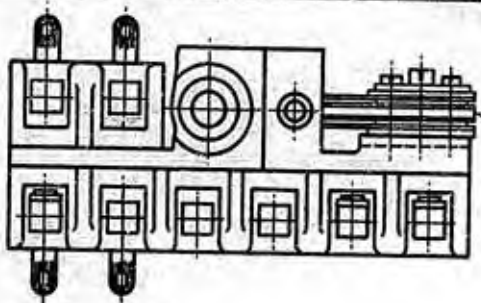
File S.1000/109 Ref. Date. 14-8-36

Branch.

Freid.

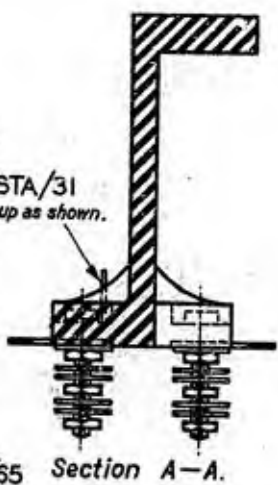
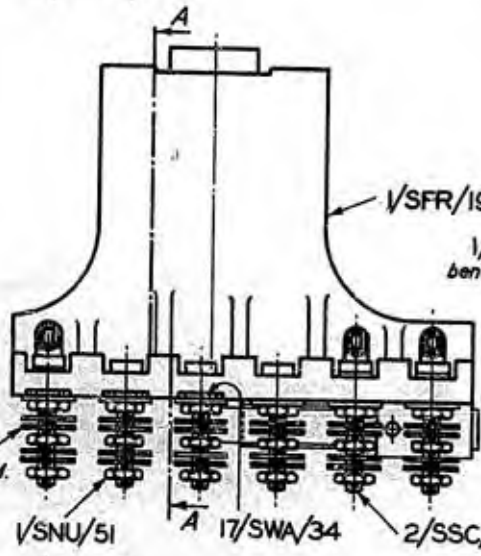
Suffix.	Amendment.
A	Part 2/12,197 added. <i>see V/S C.P. 28/30</i>
	FORMERLY DRG. 12,137. NO AMENDMENT. <i>R.Y.B. A2/4108, 17-10-38</i>
A	TAG (1/STA/31) CHANGED FROM POSN. 8 TO 6 WIRING DGM. DELETED. <i>SL 25. 4. 57</i>

Drawings
Diagrams
& Spec'ns.



1/SSP/705 or 1/SSP/709

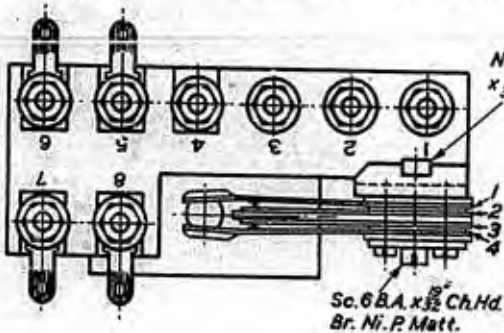
1 & 2.



Washers, 4 C.B.M. (DRG. SD 31)

1/SNU/51, 17/SWA/34, 2/SSC/65

Section A-A.



Nut, 6 B.A. .187" Sq. x 3/32" thick. Br. Ni.P.Matt.

Sc. 6 B.A. x 3/32" Ch.Hd. Br. Ni.P.Matt.

SCHEDULE

PART	QUANTITY.	
	1/SSW/9	2/SSW/9
1/SFR/19	1	1
1/SNU/51	24	24
2/SSC/65	8	8
1/SSP/705	1	—
1/SSP/709	—	1
1/STA/31	7	7
17/SWA/34	1	1
WASHER 4CBM (DRG. SD 31)	40	40
SCREW, 6 BA x 1/8" Ch.Hd. Br. Ni.P.Matt.	1	1
NUT, 6 BA, .187" Sq. x 3/32" Br. Ni.P.Matt.	1	1