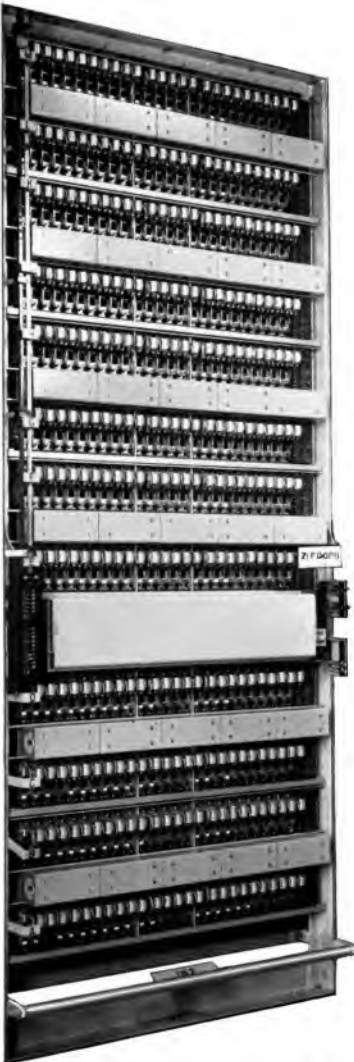


ASHFIELD AUTOMATIC TELEPHONE EXCHANGE

Ashfield exchange, in the Birmingham area, is the first in the United Kingdom to be equipped with a single-sided rack bearing 300 subscribers' line circuits. This rack, full details of which were given in "G.E.C. Telecommunications" No. 15, November, 1952, was designed, manufactured and installed by the Company and employs the G.E.C. subscriber's uniselector with the adjustable wiper assembly.

As will be seen from the illustrations, the rack presents a very neat appearance and great convenience is afforded by the provision of grading facilities on the front of the rack itself



Left The 300-line Subscriber's Line Circuit rack.

Below, Left The grading frame of the rack, with covers removed.

Below, Right : Rear view of the rack, showing the covers in position.

