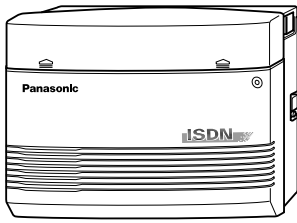


# Panasonic

## Digital Super Hybrid System

## Getting Started



Model No. **KX-TD612**



Thank you for purchasing a Panasonic Digital Super Hybrid System, Model KX-TD612. Before connecting this product, please read this manual carefully and save this manual for future use.

**Version 3**

# Contents

---

## Preparation

Page 3



Describes the included accessories and required tools for installation.

## Connections

Page 4



Shows you how to install your system.

## Basic Programming

Page 7



Describes the basic programming to make/receive calls.

## PC Programming

Page 11



Describes how to set the system programming by a personal computer (PC).

## Information on the CD-ROM

Page 16

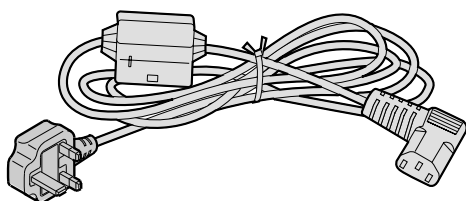


Shows the contents of the CD-ROM.

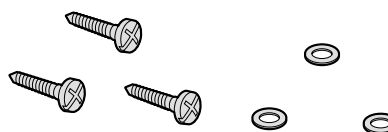
## Before installing your system

- ❑ **Check the package contents. The included materials and numbers included are:**

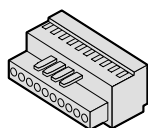
Main Unit ..... 1  
 Getting Started (This manual) ..... 1  
 CD-ROM (Including Manuals, etc.) ..... 1  
 Template (for wall mounting) ..... 1



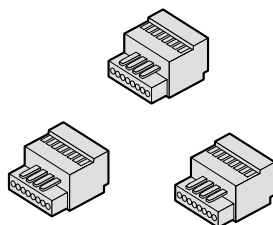
AC Cord [PSWAT206E] ..... 1



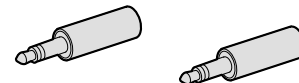
Screws [PQHE5004Z] and Washers [XWG35FY] ..... 3



10-pin Terminal Block [PSJS10S07Z] ..... 1  
 (for external equipment)



8-pin Terminal Blocks [PSJS08S08Z] ..... 3  
 (for extensions)



Pin Plugs [PQJP1E1Z] ..... 2  
 (for paging equipment/  
 external music source)

- ❑ **Necessary user-supplied tools:**

- ✓ Solid wire for the extension connection:

Diameter of conductor  $\varnothing$  0.4 mm -  $\varnothing$  0.6 mm

Maximum length of cable:

	Diameter	Maximum length
Single Line Telephone	$\varnothing$ 0.5 mm	620 m
Digital Proprietary Telephone	$\varnothing$ 0.5 mm	240 m

\* The maximum length of the cable may vary depending on the type of the cables.

- ✓ Solid wire for the CO line connection:

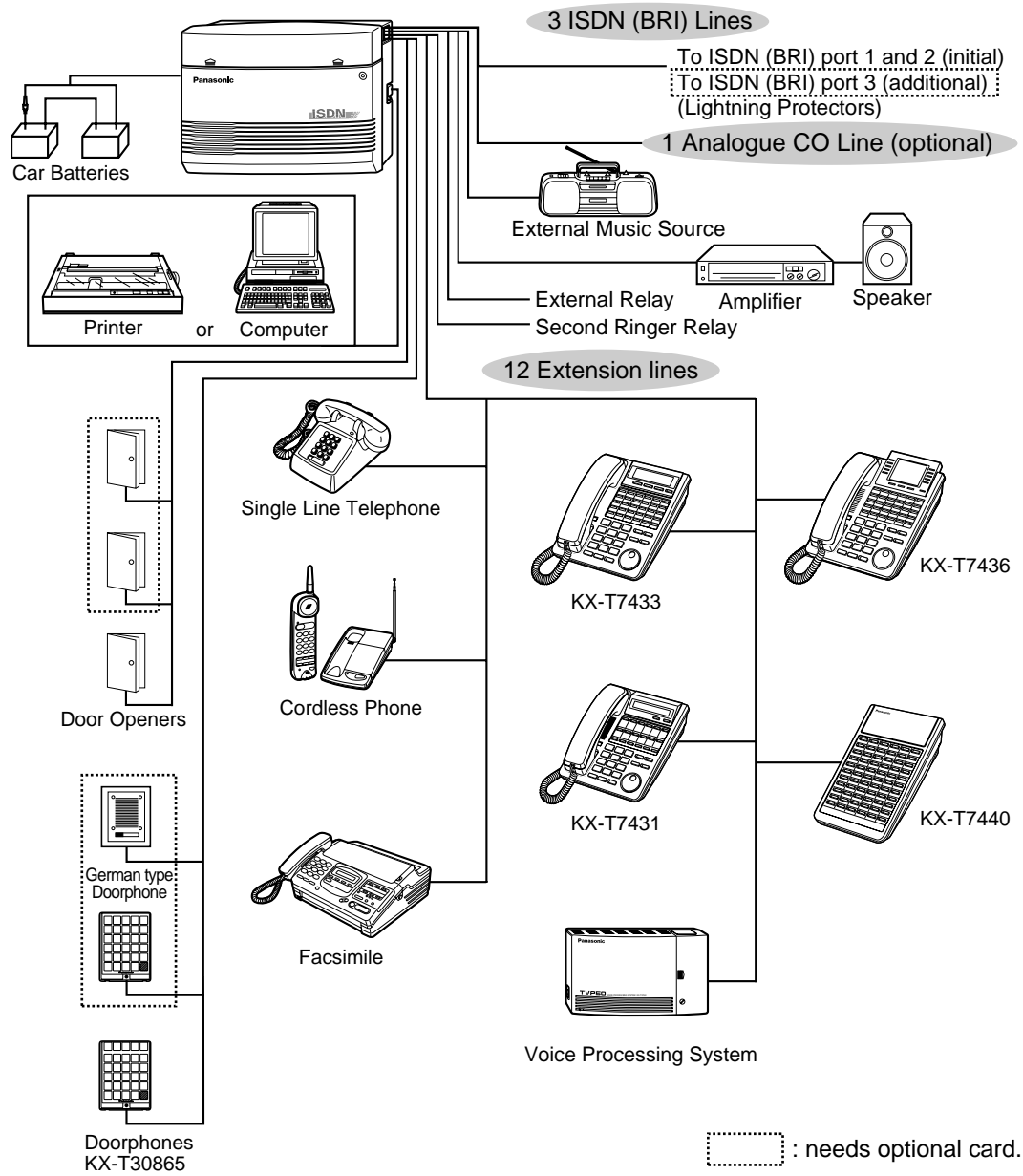
Diameter of conductor  $\varnothing$  0.4 mm -  $\varnothing$  0.65 mm

Diameter coating  $\varnothing$  0.66 mm -  $\varnothing$  1.05 mm

- ✓ A Serial Interface (RS-232C) Connector for the PC connection.
- ✓ Cross-head screwdriver and flathead screwdriver.
- ✓ Electrician's pliers.
- ✓ Wall modular jacks to connect the telephone equipment, if required.

# Connections

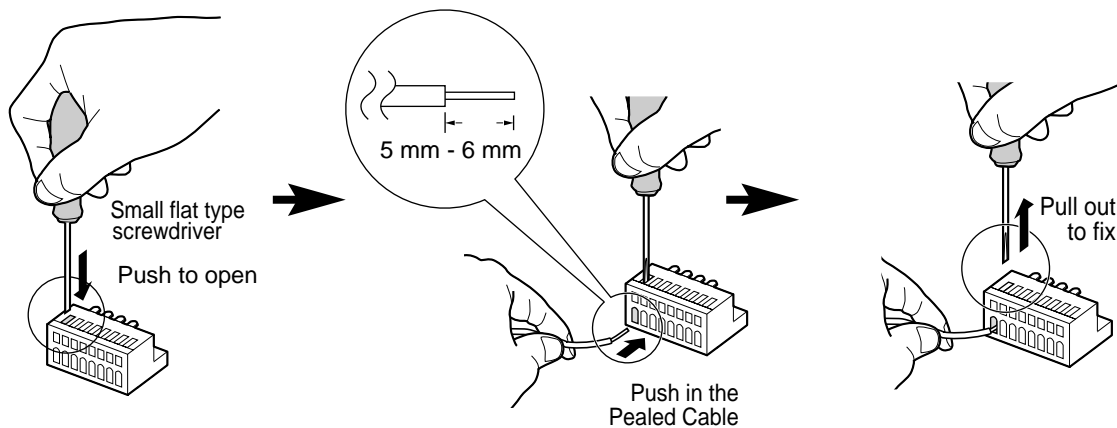
## System Connection Diagram



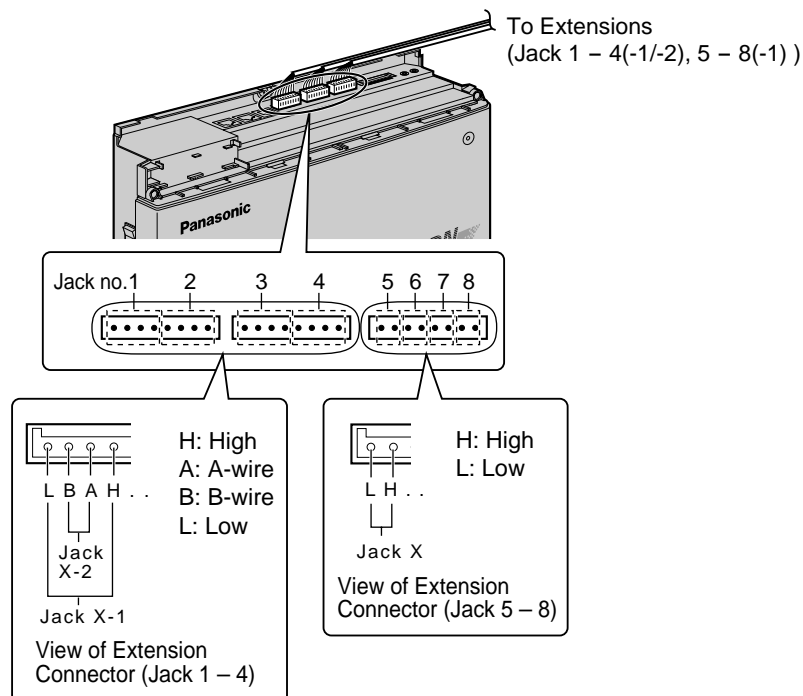
## Extension Connection

Use 8-pin terminal blocks (included) to connect the extension lines. Extension jacks 1 to 4 are available for eXtra Device Port (XDP) connection. Extension jacks 5 to 8 are only for digital proprietary telephones.

1. While pressing down on the hole at the top of the terminal block using a small flat type screwdriver, insert the required telephone wire into the side hole as shown below.



2. Attach the terminal blocks to the extension connectors on the system.

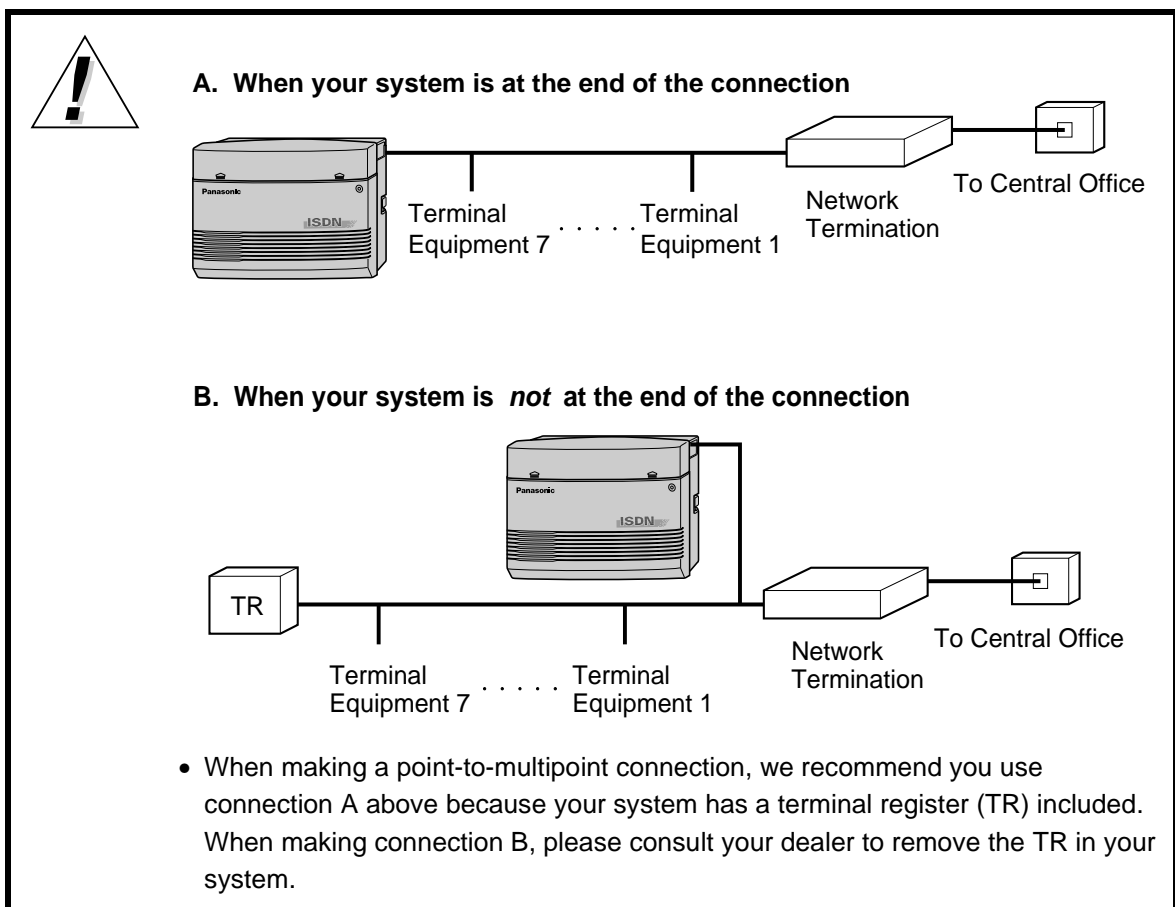
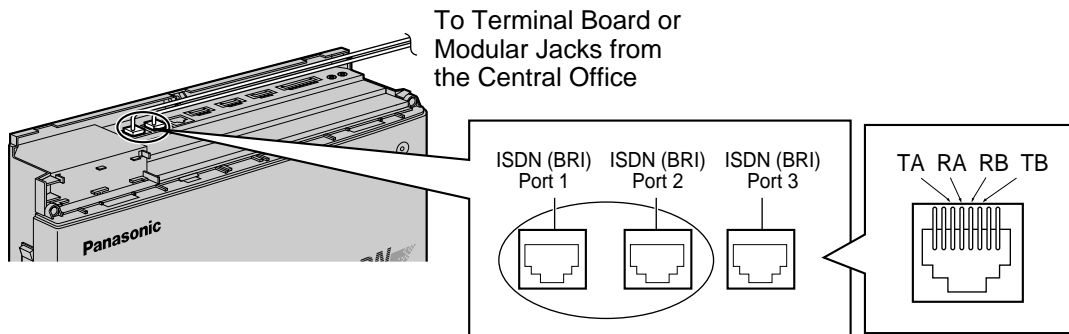


- Before making the connection of the Extension Connector to the main unit, extension lines should be checked carefully. If the extension lines are connected to the main unit with those wires making a short circuit between the H-L pins or A-B pins, it may cause a malfunction of the system, or may damage the circuit of the system in the worst case.

# Connections

## CO Line Connection

1. Insert the modular plugs of the ISDN (BRI) CO line cords (8-conductor wiring) into the ISDN (BRI) ports 1 and 2.
2. Connect the line cords to the terminal board or the modular jacks from the Central Office.



# Basic Programming

## Before Programming

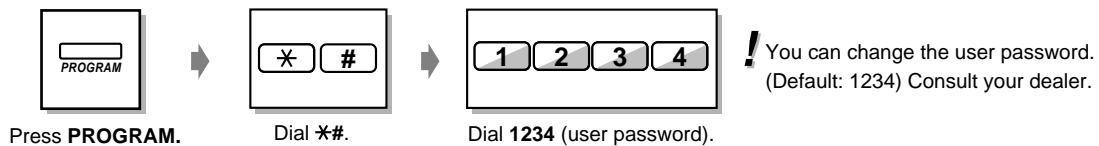
This chapter describes system programming necessary to enable receiving/making an outside call.

**Setting Status of Extension:** ISDN (BRI) port 1, Jack 1-1 (Extension no. 201)

### ❑ The following items are required before the programming

- ✓ Confirm your ISDN telephone number.
- ✓ Confirm whether your connection type is point-to-point or point-to-multipoint.
- ✓ Connect a digital proprietary telephone (DPT) **with display** (e.g. KX-T7436, KX-T7433, etc.) to the **Jack 1-1**.
- ✓ Put the overlay on the DPT connected to **Jack 1-1**.
- ✓ Connect the ISDN (BRI) CO line to the ISDN (BRI) port 1.

## To Enter the Programming Mode



# Basic Programming

## Basic Programming

### [001] System Speed Dialling and Intelligent Call Handling Number Set

1. Dial **001**.

2. Press **NEXT**.

3. Dial **500**.

4. Enter **your phone number**.

5. Press **STORE**.

6. Press **NEXT**.

7. Repeat steps 4 though 6 until you store all of **your phone number**.

8. Press **END**.

The diagram illustrates the following terminal screens:

- Step 1: `SYS-PGM NO?→` with `CLR` and `NEXT` options.
- Step 2: `SPD & CH Number` with `SKP+`, `CLR`, and `NEXT` options.
- Step 3: `SPD&CH Cod?` with `SKP+`, `CLR`, and `NEXT` options.
- Step 4: `500:Not Stored` with `→`, `SEL`, and `NEXT` options.
- Step 5: `500: 0123456789` with `→`, `SEL`, and `NEXT` options.
- Step 6: `500: 0123456789` with `SKP+`, `SEL`, and `NEXT` options.
- Step 8: `END` button.

### [623] CLIP/COLP Number Assignment for Extension

1. Dial **623**.

2. Press **NEXT**.

3. Dial **1**.

4. Dial **5** and press **→**.

5. Keep pressing **SEL+** until **AL** is displayed.

6. Press **→** and then enter your **ISDN telephone number**.

7. Press **STORE**.

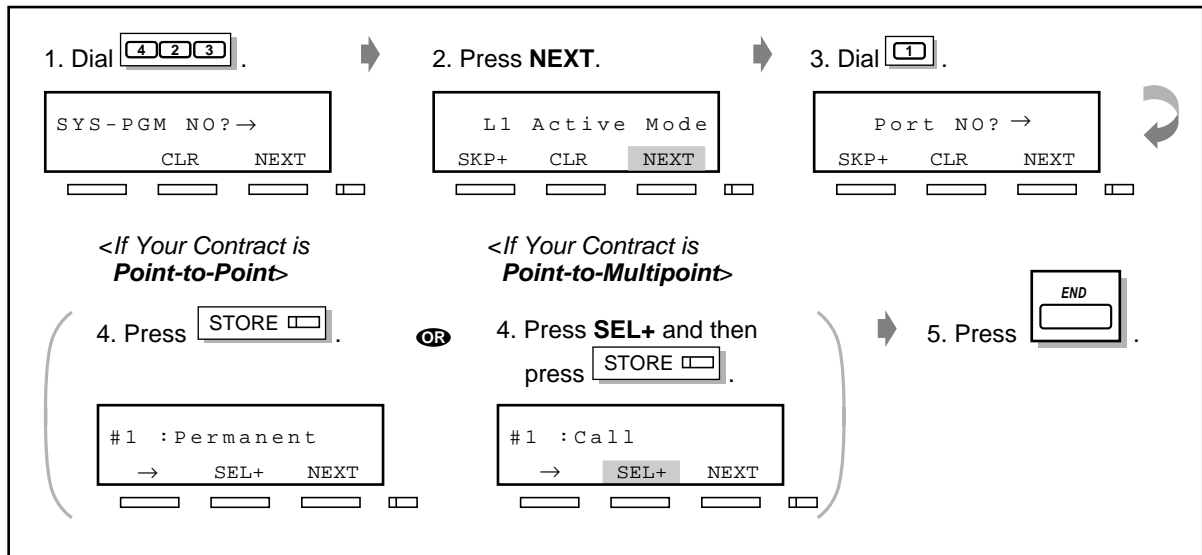
8. Press **END**.

The diagram illustrates the following terminal screens:

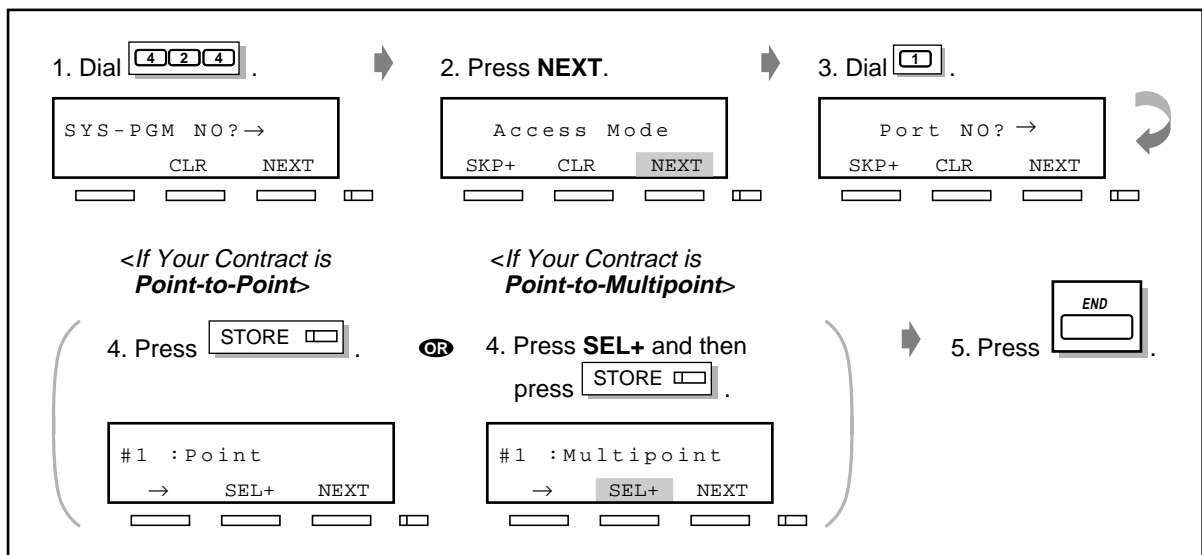
- Step 1: `SYS-PGM NO?→` with `CLR` and `NEXT` options.
- Step 2: `CLIP/COLP NO.` with `SKP+`, `CLR`, and `NEXT` options.
- Step 3: `Jack NO?` with `SKP+`, `CLR`, and `NEXT` options.
- Step 4: `#1-1:0:BI:` with `→`, `SEL`, and `NEXT` options.
- Step 5: `#1-1:5:BI:` with `→`, `SEL+`, and `NEXT` options.
- Step 6: `#1-1:5:AL:` with `→`, `SEL`, and `NEXT` options.
- Step 7: `#1-1:5:AL:012345` with `→`, `SEL`, and `NEXT` options.
- Step 8: `END` button.

# Basic Programming

## ❑ [423] ISDN Layer 1 Active Mode

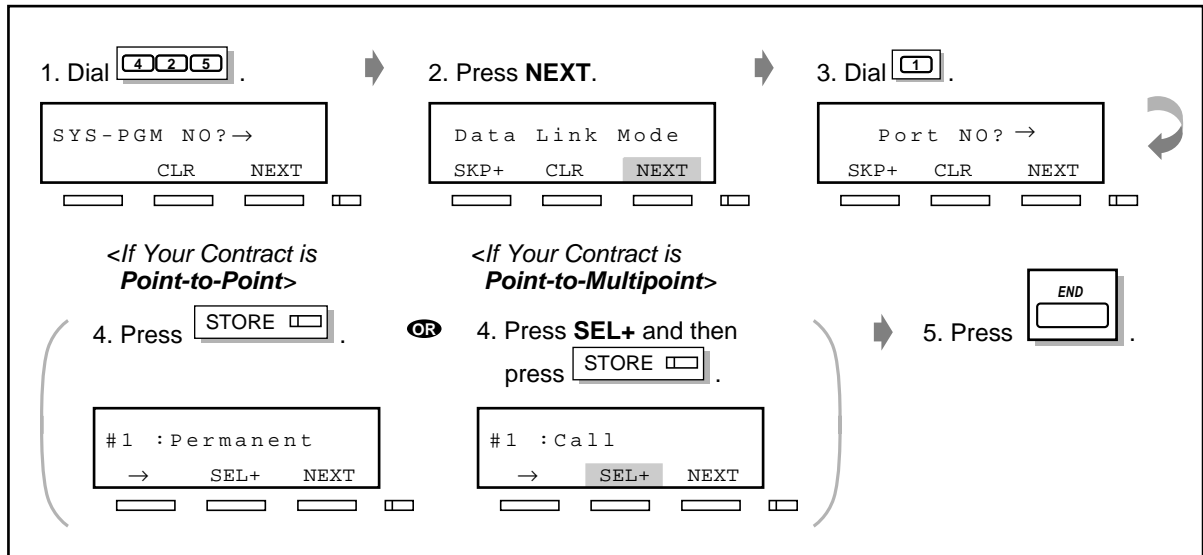


## ❑ [424] ISDN Configuration

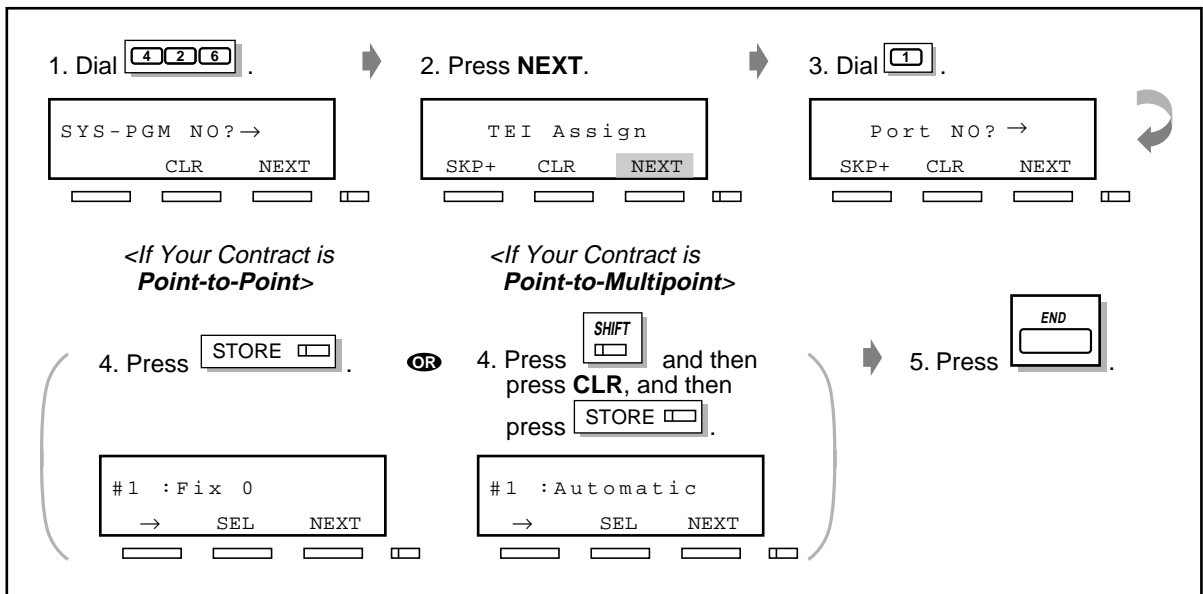


# Basic Programming

## ❑ [425] ISDN Data Link Mode



## ❑ [426] ISDN TEI Mode



## ❑ System Restart

After setting the system programming, restart the system. You can restart the system by **turning the Power switch “OFF” and then “ON”**.

## System Requirements

Before installing the PC programming software, be sure to read the following information.

### System Requirements:

- Microsoft® Windows® 95, Windows 98, Windows Me, Windows 2000 or Windows NT® 4.0 or later
- Installation of Internet Explorer 4.0 or later
- Minimum requirements  
(for installing TD612 PC Programming software only)

CPU: Pentium® 133 MHz

RAM: 48 MB

HDD: 20 MB

- Recommendation of the ISDN cards for the remote maintenance
  - FRITZ!Card PCMCIA/AVM
  - FRITZ!Card PCI/AVM
  - FRITZ!Card classic/AVM
  - ELSA MicroLink™ ISDN USB/ELSA
  - Xircom® CreditCard™ ISDN Adapter/Intel®

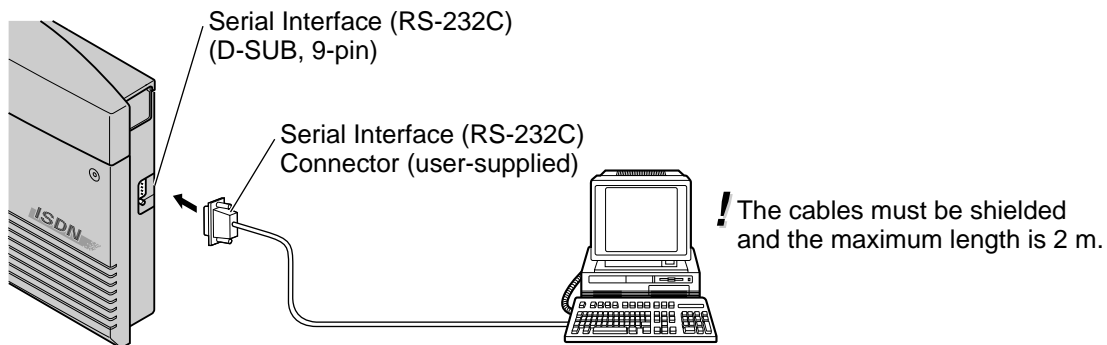
### Trademarks:

- Microsoft, Windows and Windows NT are either registered trademarks or trademarks of Microsoft Corporation in the United States and/or other countries.
- Intel, Xircom, CreditCard, and Pentium are trademarks or registered trademarks of Intel Corporation or its subsidiaries in the United States and other countries.
- AVM and FRITZ! are either registered trademarks or trademarks of AVM Computersysteme Vertriebs GmbH & Co. KG in the United States and/or other countries.
- ELSA and MicroLink are either registered trademarks or trademarks of ELSA AG in the United States and/or other countries.
- All other trademarks identified herein are the property of their respective owners.

# PC Programming

## PC Installation

The PC is used for system programming. Connect the Serial Interface (RS-232C) connector of the PC to the Serial Interface. (A printer can be connected to the system in the same way.)



☐ Refer to the following charts for the pin configuration.

Port on your system      9-pin port on a PC

Pin No.		Pin No.	Signal Name
2	←	3	TXD
3	→	2	RXD
4	→	6	DSR
5	→	5	SG
6	←	4	DTR
7	→	8	CTS
8	←	7	RTS

☐ PC Programming Software Installation

You can program the system by using the set up file supplied on the CD-ROM. First install the PC programming software in your personal computer.

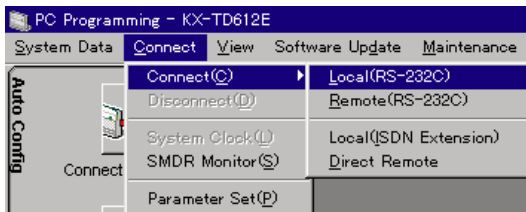
1. After exiting all Windows programmes on your computer, insert the CD-ROM (included) into CD-ROM drive.
2. Click **PC Programming Software Installer** on the initial screen.
3. Click **OK**.
4. Double-click **Setup.exe**.
5. Follow the steps of the Wizard.

## PC Programming

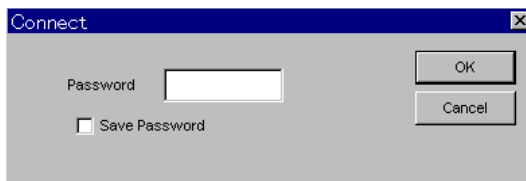
You can set system programming by PC. An example is shown below. Please change the language on the window of the PC programming software when installing.

### ❑ To enter the programming mode

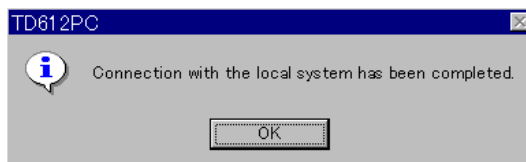
1. Choose **Connect** in menu, and then click **Local(RS-232C)**.



2. Enter the **password**. You can change the password in programming [107] System Password (Default: 1234).



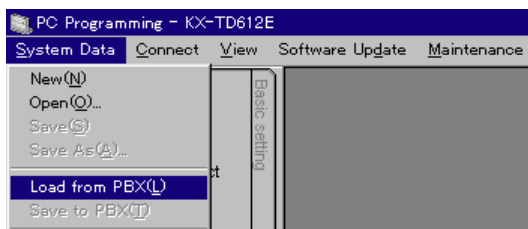
3. Click **OK**.



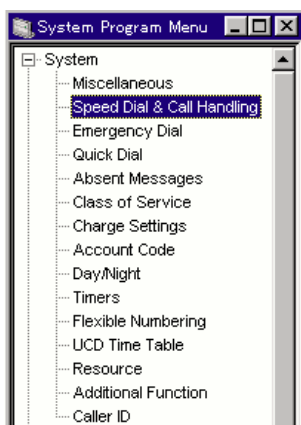
# PC Programming

## ❑ [001] System Speed Dialling and Intelligent Call Handling Number Set

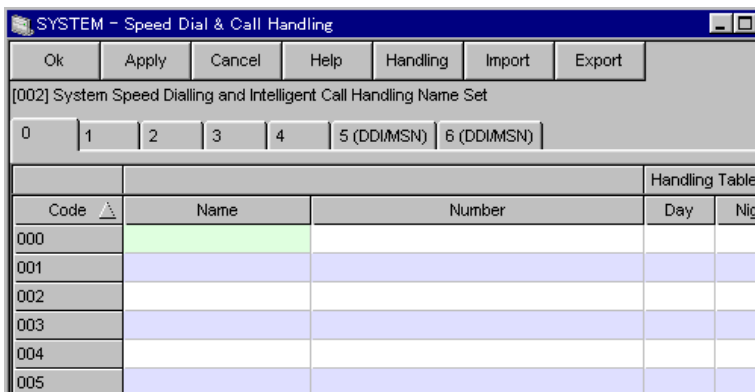
1. Click **Load from PBX**.



2. Click **OK** to start uploading automatically.
3. System Program Menu screen is displayed. Double-click **Speed Dial & Call Handling**.

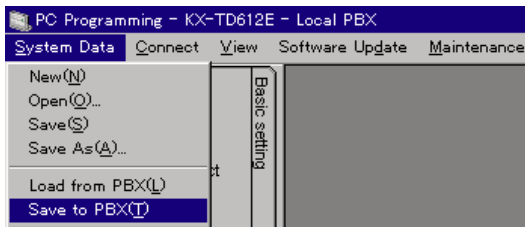


4. After entering telephone numbers and names, Click **OK** to store them.

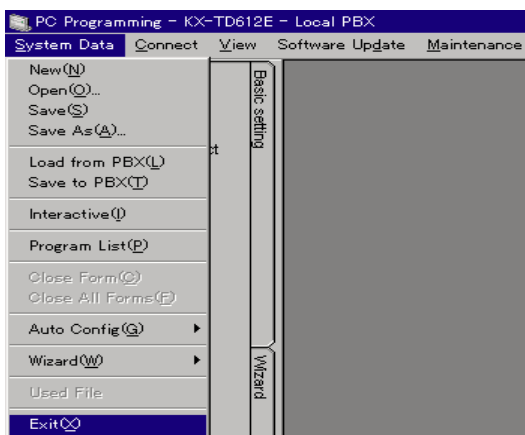


## ❑ To exit the programming mode

1. After finishing all the necessary programming, click **Save to PBX**.



2. Click **OK** to start downloading automatically.
3. Click **Exit**.



4. Click **OK**.
5. Click **OK**.

# Information on the CD-ROM

---

## <Product Documentation for the KX-TD612>

You can find electronic documentation for the KX-TD612 System, created in Portable Document Format (PDF), on the attached CD-ROM.  
Before you begin using the PDF documents, be sure to read the following information. Once you insert the KX-TD612 CD-ROM into your CD-ROM drive, an html file will start up automatically. Following the installation wizard, please select the PBX model you have, the language you want, and the manual you need. Please use Microsoft Internet Explorer version 4.0 or later. (It is not included in this CD-ROM.)

### To view the PDF documents:

- Adobe® Acrobat® Reader version 4.0 or later is required.  
If you do not have the appropriate software, you can use the Acrobat Reader Application included in this CD-ROM.

### System Requirements for Acrobat Reader:

- i486™, Pentium, or Pentium Pro Processor-based personal computer
- Microsoft Windows 95, Windows 98 or Windows NT 4.0 service pack 3 or later
- 10 MB of available RAM on Windows 95 and Windows 98 (16 MB recommended)
- 16 MB of available RAM on Windows NT (24 MB recommended)
- 10 MB of available hard-disk space

### Installation of Acrobat Reader:

Install Acrobat Reader in "Acrobat4.0installer" folder on this CD-ROM.

### Includes:

- **Adobe Acrobat Reader 4.0 for Microsoft Windows**
- **Documentation**
  - The Getting Started Manual
  - The Features Guide
  - The User Manual
  - The Internet Driver Installation Manual
- **Modem Driver File**

### Copyright:

- Digitised data for the documentation:  
Kyushu Matsushita Electric Co., Ltd. (KME) owns the data for documentation included on this CD-ROM.

### Trademarks:

- Adobe and Acrobat are either registered trademarks or trademarks of Adobe Systems Incorporated in the United States and/or other countries.
- i486 and Pentium are trademarks or registered trademarks of Intel Corporation or its subsidiaries in the United States and other countries.
- All other trademarks identified herein are the property of their respective owners.