

Solitaire 6100 and PMS - Payphone Management System. Remote control and reporting from a Windows® PC.



Remote status reporting

**Remote configuration
programming**

**Industry standard
Windows® PC as the central
control system**

**Low cost indoor
payphones**

**Coin operated using Pay-
on-Answer with refund**

Optional cardswipe reader

**Metal cased version
available**



Alternative Body Styles



Two alternatives are available: a low cost plastic version for indoor supervised sites, and a steel clad version with an armoured handset cord and more secure cashbox, for indoor locations requiring higher security.

Fault, Damage and Vandalism Reports



Most instances of faults, damage or mis-use are reported to the central system automatically. The **absence** of reports can also be detected by the PMS to raise an alarm if required.

Socket Security



A rear aperture in the High Security (HS) Version allows the shroud to completely cover the telephone wall socket. This protects the wall socket from damage and fraudulent disconnection.

Solitaire 6100HS Card Reader Option



Solitaire 6100 and 6100HS Payphones

Technical Specification for both Versions

- Pay-on-Answer with Refund
- UK Coins: 10p 20p 50p £1 £2
- Refund of Coins recognised as Invalid
- Two Year Battery Life
- Next Call Button
- Three Memory Buttons
- Large Liquid Crystal Display with 11 digit capability
- Hearing Aid Compatible
- 999/112 Emergency
- Tone/Pulse Switchable
- Communicates with Payphone Management System (PMS) via Integral Standard V.22 Modem

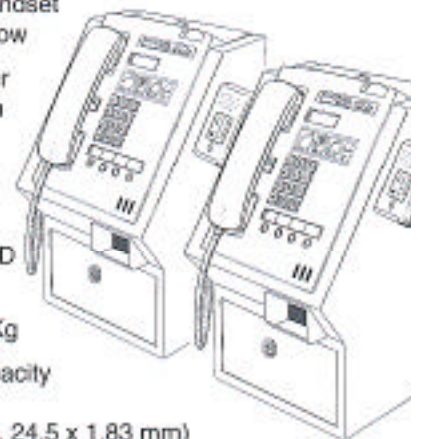
Table Top Version 6100

- Dimensions 260 H x 200 D x 215 W mm
- Weight ~2 Kg
- Cashbox Capacity 0.7 litres, (c.400 coins, 24.5 x 1.83 mm)




High Security Version 6100HS

- 1.6mm Steel Security Casing
- Armoured Handset Cord and Elbow
- Tough Powder Coated Finish
- Multi Position Wall Fixing
- Dimensions 460 H x 252 D x 265 W mm
- Weight ~11 Kg
- Cashbox Capacity 3.0 litres, (c.1200 coins, 24.5 x 1.83 mm)



Card Reader Option for 6100HS

- Diecast Metal Reader Housing
- Card Services provided by  CreditCall Communications
- System accepts Prepaid Cards and all Credit Card Types and Switch/Delta
- Commission paid to the Site Owner or Payphone Operator
- Available as a Retrofit to existing Solitaire 6100HS

Payphone Management System (PMS)

Technical Specification for Central PC

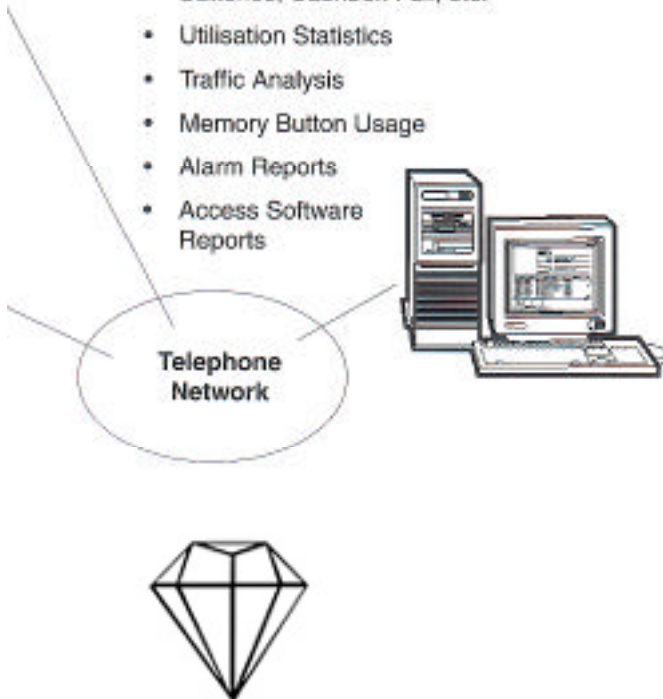
- Windows® 95 Based PC
- 200+ Mhz Pentium® CPU
- 32+ MB RAM
- Standard V.22+ Modem
- CD-ROM Drive Required
- System may be upgraded to Landis & Gyr "REMAS" (64MB RAM required)

Remote Programming Facilities

- Local Codes/Call Charges
- Tariffing/Fees
- Coin Set
- Automatic Reduced Cost Routing (including local calls, if required)
- Exception Codes (Chatlines, Mobiles, etc.)
- PABX Compatible
- Memory Dialling Numbers
- Creditcard Operation

Remote Reporting Facilities

- Timed, Regular Reports (allows detection of "missed" reports)
- Cash Takings/Collections
- Payphone Status: Handset Cord, Coin Mech, Batteries, Cashbox Full, etc.
- Utilisation Statistics
- Traffic Analysis
- Memory Button Usage
- Alarm Reports
- Access Software Reports



Automatic Cash Records



The cashbox current value and the accumulated total cash collected are reported to the PMS regularly. This is done automatically over the telephone network, without manual intervention or display at the payphone.

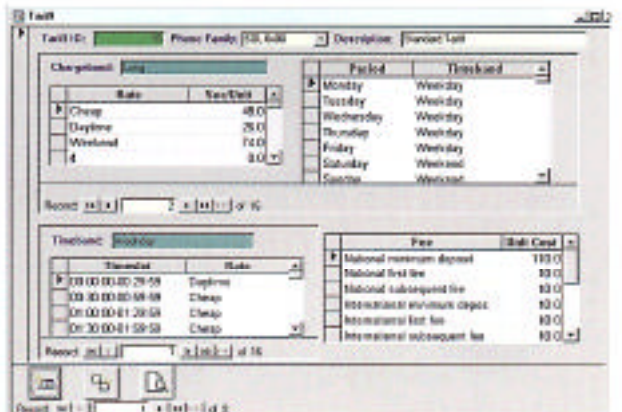
Reduced Cost Routing



The Solitaire 6100 can be remotely programmed to automatically route calls via alternative networks to reduce costs for the system owner.

Payphone users can continue to be charged at a separately programmable rate.

Programmability



Coin Parameters, Charge Rates, Special Dialling Prefixes, can be down-loaded from the PMS.



APPROVED for connection
to telecommunication systems
specified in the instructions for
use subject to the conditions set
out in them.



Solitaire Payphones Ltd
PO Box 105
Ashted
Surrey
KT21 1AQ
Tel: 01372 270111
Fax: 01372 271143
Company Registered No: 4162920
VAT No: 776 0739 95